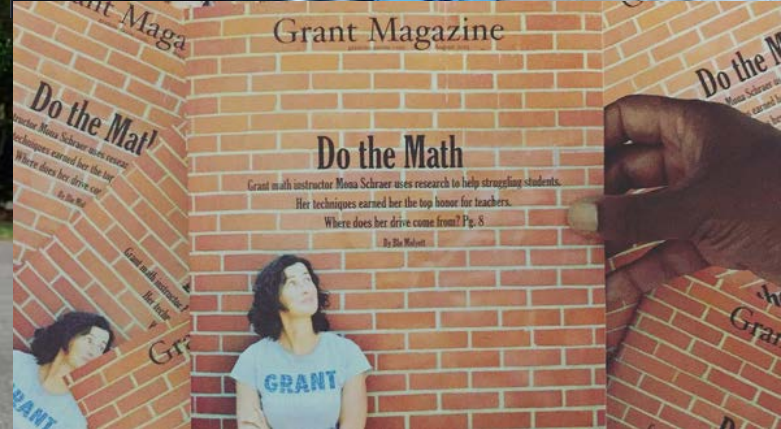


mahlum

Masterplan Update
Grant High School Modernization
12.08.15



Proposed Building Program: With a focus on comparison



Grant: Core Academic Programs

Teaching Stations

PPS Grant High School Program Summary

Program Area	Ed Spec Program		GHS Existing Program		GHS Proposed Program	
	Sta	NSF	Sta	NSF	Sta	NSF
CORE ACADEMIC PROGRAMS						
Career Preparation / CTE / Electives	9	12,080	8	13,543	9	12,270
General Education Classrooms <i>(English, Math, Social Studies, Health, World Languages)</i>	35	34,300 <i>(980 SF each)</i>	45	35,037 <i>(780 avg SF each)</i>	40	34,000 <i>(850 SF each)</i>
English	11		15		12	
Math	8		11		10	
Social Studies	8		8		8	
Health	2		3		2	
World Language	6		8		8	
Electives	0		0		0	
Specialized Classrooms (Science)	11	17,480	11	15,840	13	17,580
Extended Learning		8,000		0		8,000
TOTAL: CORE ACADEMIC PROGRAMS	55	71,860	64	64,420	62	71,850



Grant: Proposed Core Academic Programs

Career Preparation / CTE / Electives

9 CTE/Elective TS Provided

- :: Digital Media
- :: Graphic Design
- :: Engineering
- :: Computer Science
- :: Marketing (+ Added Student Store)
- :: Photography / Darkroom
- :: Audio Engineering
- :: Leadership / Student Classroom
- :: Grant Magazine

Additional Programs Provided

- :: Makers Space (Dedicated space provided but not allocated as TS)
- :: Robotics (Shared use with STEM lab – in Science)



Grant: Proposed Core Academic Programs

Career Preparation / CTE / Electives

Variation From Ed Spec

- :: Distribution of space varies
- :: Added Student Store



Grant: Proposed Core Academic Programs

Career Preparation / CTE / Electives

Variation From Ed Spec

- :: Distribution of space varies
- :: Added Student Store

Comparison To Existing

- :: Engineering & Computer Science Lab will be separate classrooms (currently they are shared)
- :: Increase of classroom size from 750 SF to 850 SF



Grant: Proposed Core Academic Programs

General Education Classrooms

Variation From Ed Spec

- :: Added 5 classrooms (35 to 40)
- :: Decrease in classroom size from 980 SF to 850 SF



Grant: Proposed Core Academic Programs

General Education Classrooms

Variation From Ed Spec

- :: Added 5 classrooms (35 to 40)
- :: Decrease in classroom size from 980 SF to 850 SF

Comparison To Existing

- :: Removed 5 classrooms (45 to 40); added Teacher Offices that are convertible for an additional 7 classrooms (net gain of 2 TS)
- :: Increase in classroom size from 750 SF (avg) to 850 SF



Grant: Proposed Core Academic Programs

Specialized Classrooms (Science)

Variation From Ed Spec

:: Revised from:

(11) labs at 1500 SF

(4) prep rooms

:: Revised to:

(6) labs at 850-1,000 SF

(6) labs at 1,300-1,450 SF

(1) STEM Lab / Robotics
at 3,000 SF

(3) prep rooms



Grant: Proposed Core Academic Programs

Specialized Classrooms (Science)

Variation From Ed Spec

:: Revised from:

(11) labs at 1500 SF

(4) prep rooms

:: Revised to:

(6) labs at 850-1,000 SF

(6) labs at 1,300-1,450 SF

(1) STEM Lab / Robotics
at 3,000 SF

(3) prep rooms

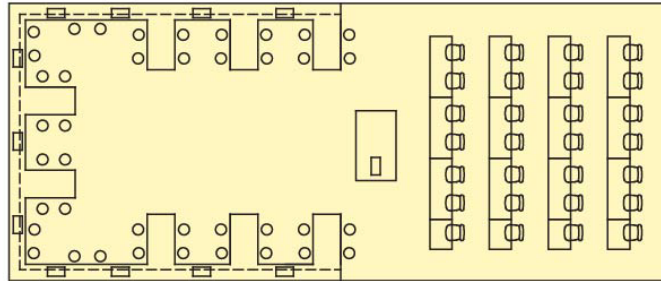
Comparison To Existing

:: Added (1) lab

:: Added (1) STEM Lab / Robotics

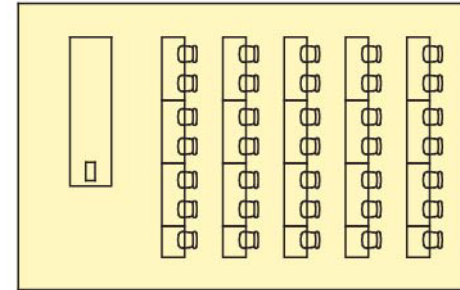
:: Classroom sizes vary

Ed Spec Science

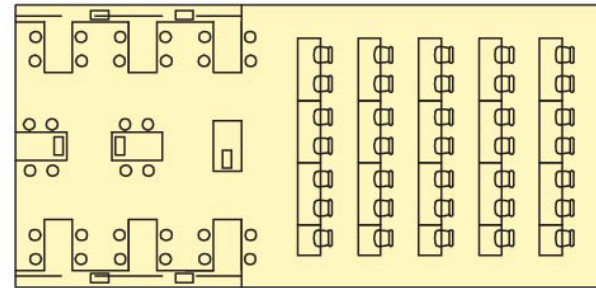


Science Lab
1500 sf

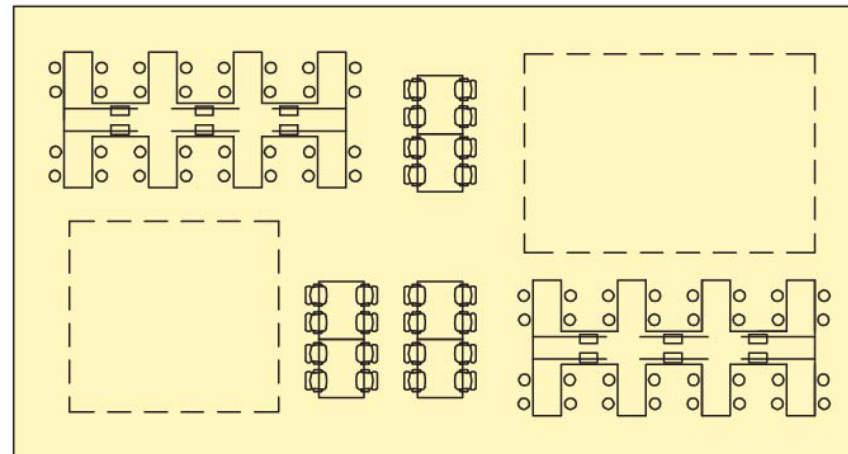
Proposed Science



Science
Lecture
1000 SF
35 seats



Science Lab
1300 SF
35 seats
32 stations



STEM Lab /
Robotics
3000 SF
64 stations



Grant: Core Academic Programs

Extended Learning

Variation From Ed Spec

:: None



Grant: Core Academic Programs

Extended Learning

Variation From Ed Spec

:: None

Comparison To Existing

:: Added extended learning areas
(8,000 SF)



Grant: Core Academic Programs

Teaching Stations

PPS Grant High School Program Summary

Program Area	Ed Spec Program		GHS Existing Program		GHS Proposed Program	
	Sta	NSF	Sta	NSF	Sta	NSF
CORE ACADEMIC PROGRAMS						
Career Preparation / CTE / Electives	9	12,080	8	13,543	9	12,270
General Education Classrooms <i>(English, Math, Social Studies, Health, World Languages)</i>	35	34,300 <i>(980 SF each)</i>	45	35,037 <i>(780 avg SF each)</i>	40	34,000 <i>(850 SF each)</i>
English	11		15		12	
Math	8		11		10	
Social Studies	8		8		8	
Health	2		3		2	
World Language	6		8		8	
Electives	0		0		0	
Specialized Classrooms (Science)	11	17,480	11	15,840	13	17,580
Extended Learning		8,000		0		8,000
TOTAL: CORE ACADEMIC PROGRAMS	55	71,860	64	64,420	62	71,850



Grant: Core Academic Programs

Area Summary

Variation From Ed Spec

:: Decrease of 10 SF

:: Increase of (7) teaching stations



Grant: Core Academic Programs

Area Summary

Variation From Ed Spec

- :: Decrease of 10 SF
- :: Increase of (7) teaching stations

Comparison To Existing

- :: Increase of 7,430 SF
- :: Decrease of (2) teaching stations; added Teacher Offices that are convertible for an additional 7 classrooms (net gain of 5 TS)



Grant: Fine & Performing Arts

Teaching Stations

PPS Grant High School Program Summary

Program Area	Ed Spec Program		GHS Existing Program		GHS Proposed Program	
	Sta	NSF	Sta	NSF	Sta	NSF
FINE & PERFORMING ARTS						
Fine & Visual Arts	2	3,080	4	6,368	4	5,740
Band / Orchestra	1	3,470	1	1,744	1	3,470
Choir		200	1	2,956	1	1,700
Theater / Dance	1	14,600	2	20,654	2	24,050
TOTAL: FINE & PERFORMING ARTS	4	21,350	8	31,722	8	34,960



Grant: Fine & Performing Arts

Teaching Stations

Variation From Ed Spec

:: Added (2) 2-D Art Studios

2-D Art

Printmaking

:: Increase in kiln room size

:: Added Art office

:: Added Dance/Aerobic/Yoga studio

:: Added the optional Green Room

:: Added the optional Choir Room



Grant: Fine & Performing Arts

Teaching Stations

Variation From Ed Spec

- :: Added (2) 2-D Art Studios
- 2-D Art
- Printmaking
- :: Increase in kiln room size
- :: Added Art office
- :: Added Dance/Aerobic/Yoga studio
- :: Added the optional Green Room
- :: Added the optional Choir Room

Comparison To Existing

- :: All current programs accommodated
- :: Added the optional Green Room



Grant: Fine & Performing Arts

Area Summary

Variation From Ed Spec

:: Increase of 13,610 SF;
existing auditorium modernized



Grant: Fine & Performing Arts

Area Summary

Variation From Ed Spec

:: Increase of 13,610 SF;
existing auditorium modernized

Comparison To Existing

:: Increase of 3,238 SF;
existing auditorium modernized



Grant: Physical Education / Athletics

Teaching Stations

PPS Grant High School Program Summary

Program Area	Ed Spec Program		GHS Existing Program		GHS Proposed Program	
	Sta	NSF	Sta	NSF	Sta	NSF
PHYSICAL EDUCATION / ATHLETICS						
Physical Education / Athletics	3	35,580	5	42,737	5	35,730
TOTAL: PE / ATHLETICS	3	35,580	5	42,737	5	35,730



Grant: Physical Education / Athletics

Teaching Stations

Variation From Ed Spec

- :: Added Spinning Studio
- :: Increased from 1 to 4
Gender Neutral Toilet/Shower
- :: Decrease in size of Wrestling Rm
(in order to add a separate space
for the Dance Studio)



Grant: Physical Education / Athletics

Teaching Stations

Variation From Ed Spec

- :: Added Spinning Studio
- :: Increased from 1 to 4
Gender Neutral Toilet/Shower
- :: Decrease in size of Wrestling Rm
(in order to add a separate space
for the Dance Studio)

Comparison To Existing

- :: Added Concessions
- :: Added Laundry Room
- :: Enlarged the main gym to
accommodate 1,700 student
assembly



Grant: Physical Education / Athletics

Area Summary

Variation From Ed Spec

:: Increase of 150 SF



Grant: Physical Education / Athletics

Area Summary

Variation From Ed Spec

:: Increase of 150 SF

Comparison To Existing

:: Decrease of 7,007 SF

(existing basement(s) are large and support space far exceeds program)



Grant: Educational Support

PPS Grant High School Program Summary

Program Area	Ed Spec Program		GHS Existing Program		GHS Proposed Program	
	Sta	NSF	Sta	NSF	Sta	NSF
EDUCATIONAL SUPPORT						
Administration		15,260		4,595	7*	12,860
Counseling / Career		2,735		2,489		2,780
Student Support	0	0	2	2,153	2	2,220
Student Activities		270		510		390
Technology Access		5,500		2,211		1,500
Special Education (SPED)	0	5,900	3	7,757	3	7,900
Emerging Language Learning (ELL)	1	800	1	715	1	850
Student Center		12,620		13,440		12,620
Media Center / Library		10,220		9,191		8,070
Student Space		0		0		0
Custodial		3,850		4,039		3,930
Building Support		10,045		13,673		12,050
TOTAL: EDUCATIONAL SUPPORT	1	67,200	6	60,773	6	65,170

* Teacher offices are designed to function as enclosed classrooms as necessary and would provide an additional (7) teaching stations



Grant: Educational Support

Admin / Counseling / Career / Student Support / Student Activities / Tech Access

Variation From Ed Spec

- :: Added Vice Principal's Office
- :: Added Vice Principal's Secretary
- :: Removed Dean of Students Off.
- :: Removed Business Manager Off.
- :: Decreased Teacher Office size
- :: Added Counseling Office
- :: Removed Drug/Alcohol Office
- :: Added Social Worker Office
- :: Removed (1) Career Counselor Off.
- :: Added AVID/Career Exploration Classroom and Coordinator Office
- :: Added Virtual Scholars Classroom
- :: Added Restorative Justice Office and Conference Room
- :: Added Athletic Director Support Staff Station
- :: Non-Specialized Computer Lab replaced with Mobile Cart Storage



Grant: Educational Support

Special Education / Student Center / Media Center / Custodial / Building Support

Variation From Ed Spec

- :: Reduce Learning Resource Center from 3 to 2 (space allocated to life skills per users)
- :: Added (2) LRC Offices
- :: Added Para-Educator Office
- :: Added LRC Conference/Testing
- :: Increased size of Life Skills Classrooms (600 to 1200 SF)

- :: Removed Life Skills Reception (space allocated to life skills per users)
- :: Decreased size of Sensory Room (space allocated to life skills per users)
- :: Added Medically Fragile Program (unique to Grant; not provided in the ed spec)
- :: Increased Gender Neutral Toilets from (1) to (4)



Grant: Educational Support

Area Summary

Variation From Ed Spec

:: 2,770 SF was added to Educational Support; then 4,800 SF was re-categorized as CTE square footage resulting in the apparent decrease of 2,030 SF



Grant: Educational Support

Area Summary

Variation From Ed Spec

:: 2,770 SF was added to Educational Support; then 4,800 SF was re-categorized as CTE square footage resulting in the apparent decrease of 2,030 SF

Comparison To Existing

:: 8,500 SF of Teacher Office space (that can be used as classroom space) was added; Educational Support programs was decreased by 4,103 SF for a net increase of 4,397 SF



Grant: Additional Support

Small Instructional Spaces / Partner & Community Use / Wrap-Around Services

PPS Grant High School Program Summary

Program Area	Ed Spec Program		GHS Existing Program		GHS Proposed Program	
	Sta	NSF	Sta	NSF	Sta	NSF
SMALL INSTRUCTIONAL SPACES						
TOTAL: SMALL INSTR. SPACES	10	5,000	0	0	0*	5,000
PARTNER & COMMUNITY USES						
TOTAL: PARTNER & COMM. USES		1,200		620		1,590
WRAP-AROUND SERVICE PROVIDERS						
TOTAL: WRAP-AROUND SERV. PROV.		4,700		1,445		4,830

*The 10 Small Instructional spaces identified in the ed spec are provided, but are not counted as teaching stations



Grant: Additional Support

Small Instructional Spaces

Variation From Ed Spec

:: None



Grant: Additional Support

Small Instructional Spaces

Variation From Ed Spec

:: None

Comparison To Existing

:: Added Small Instructional Spaces
(5,000 SF)



Grant: Additional Support

Partner & Community Uses

Variation From Ed Spec

- :: Added SEI Program
(Self Enhancement Inc.)
- :: Increase of 390 SF



Grant: Additional Support

Partner & Community Uses

Variation From Ed Spec

- :: Added SEI Program
(Self Enhancement Inc.)
- :: Increase of 390 SF

Comparison To Existing

- :: Added Clothing/Food Closet
- :: Increase of 970 SF



Grant: Additional Support

Wrap-Around Service Providers

Variation From Ed Spec

- :: Added optional Breastfeeding Rm
- :: Increased size of Breastfeeding Rm
- :: Increase of 130 SF



Grant: Additional Support

Wrap-Around Service Providers

Variation From Ed Spec

- :: Added optional Breastfeeding Rm
- :: Increased size of Breastfeeding Rm
- :: Increase of 130 SF

Comparison To Existing

- :: Added Teen Parent Services (not currently provided at Grant)
- :: Increase of 3,385 SF



Grant: Total Building Gross

Area Summary

PPS Grant High School Program Summary

Program Area	Ed Spec Program		GHS Existing Program		GHS Proposed Program	
	Sta	NSF	Sta	NSF	Sta	NSF
Total Assignable Square Feet	73	206,890	83	201,720	81	219,130
<i>Subtotal - Unassignable Areas</i>	<i>26.5%</i>	<i>74,480</i>	<i>25.8%</i>	<i>70,230</i>	<i>26.5%</i>	<i>75,850</i>
TOTAL BUILDING GROSS SF		281,370		271,950		294,980
					GSF Overage	13,610

** Total teaching stations, if include teacher offices as classrooms

Program Additions (Grant HS Programs not in Ed Spec):

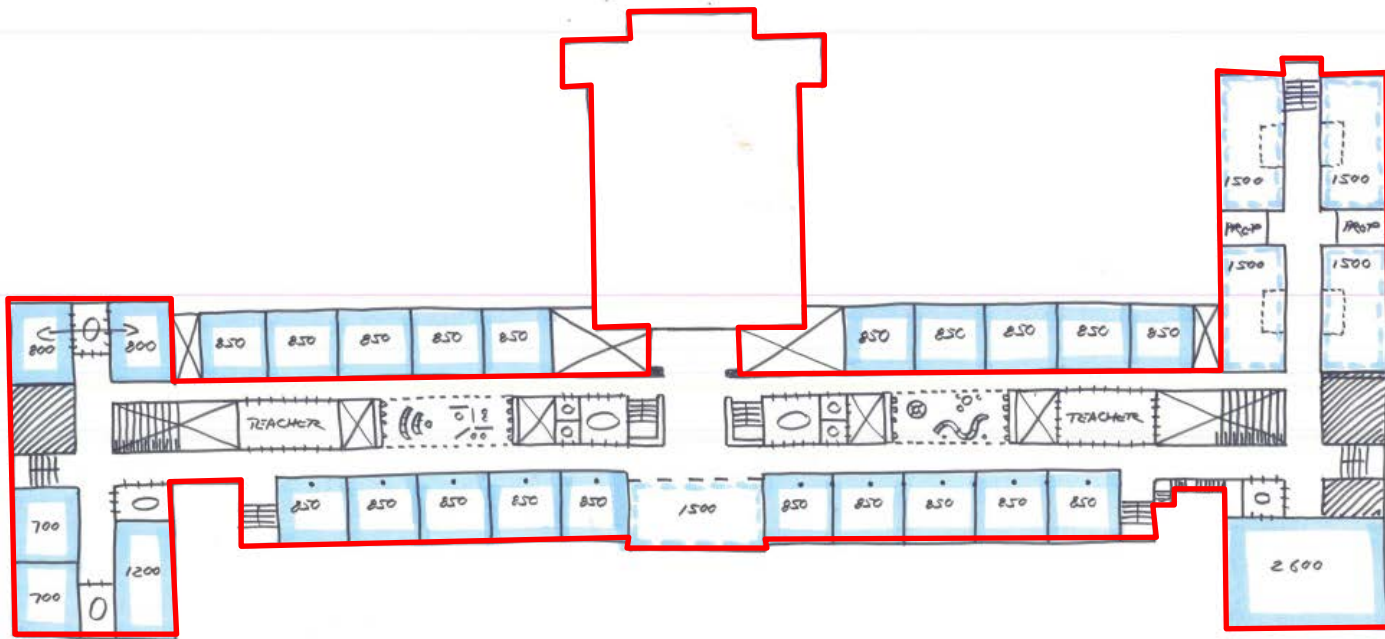
Medically Fragile Program	2,200 NSF
Choir Classroom	2,200 NSF
AVID, Virtual Scholars, Rest. Justice	2,220 NSF
Gender-Neutral Facilities	630 NSF
Total NSF	7,250 NSF

Reuse of Existing Theater / Balcony 7,000 NSF



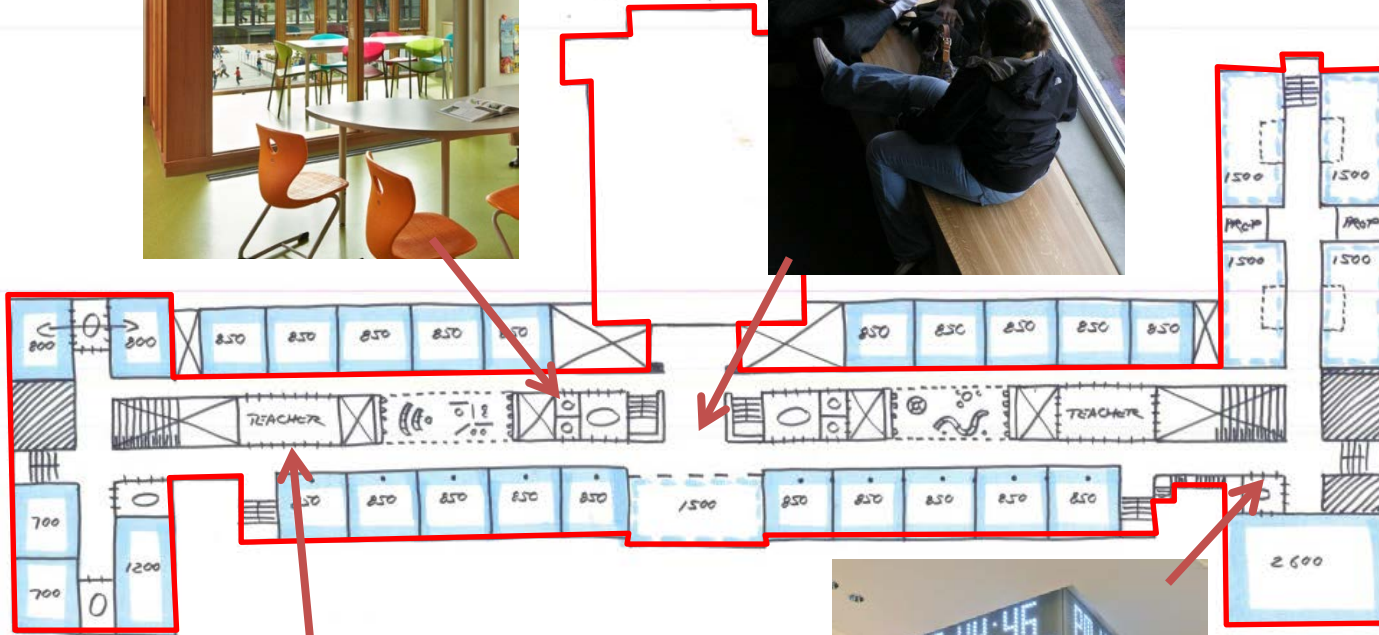
Masterplan Concept

Planning Concepts in Historic Context

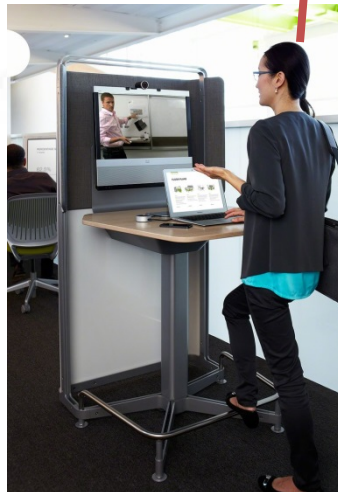
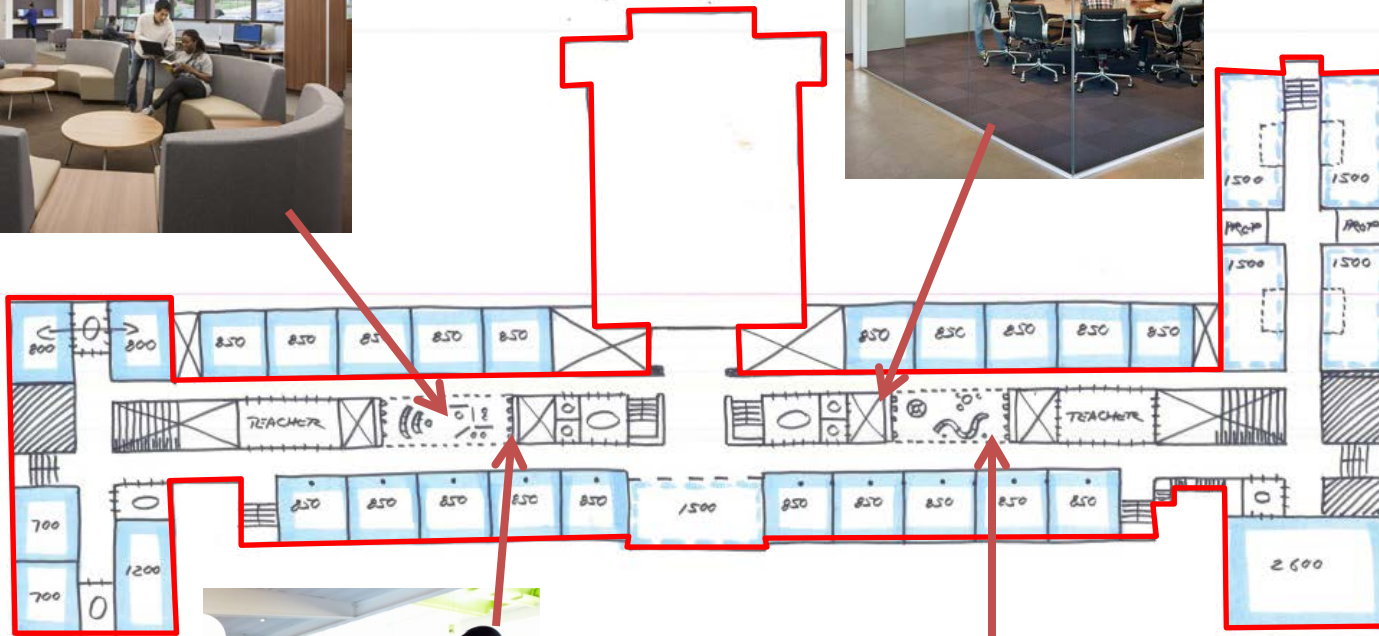


Architectural Design Principles | Planning

Planning Concepts in Historic Context



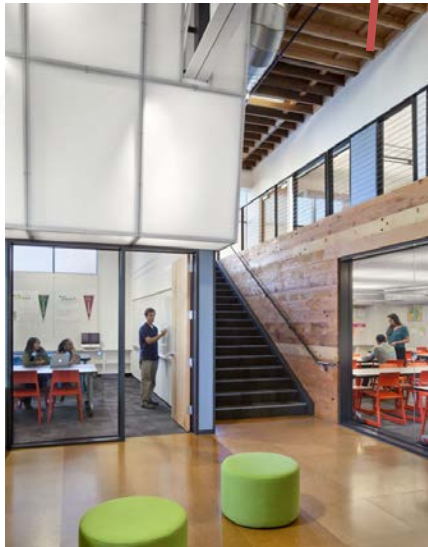
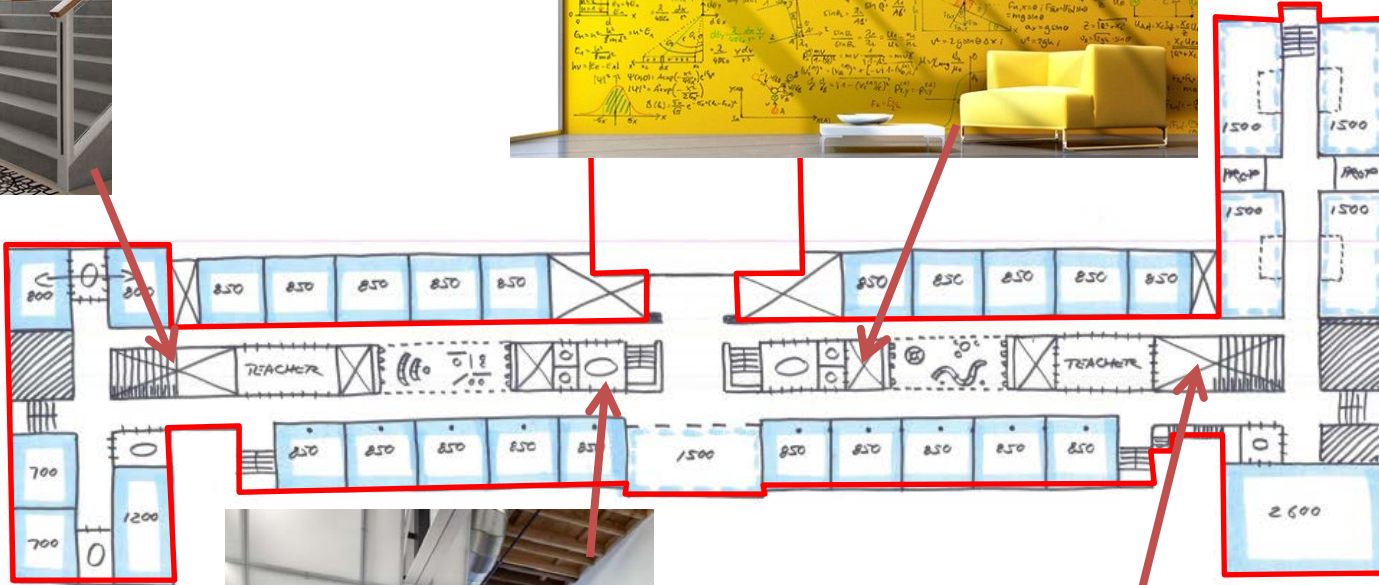
Planning Concepts in Historic Context



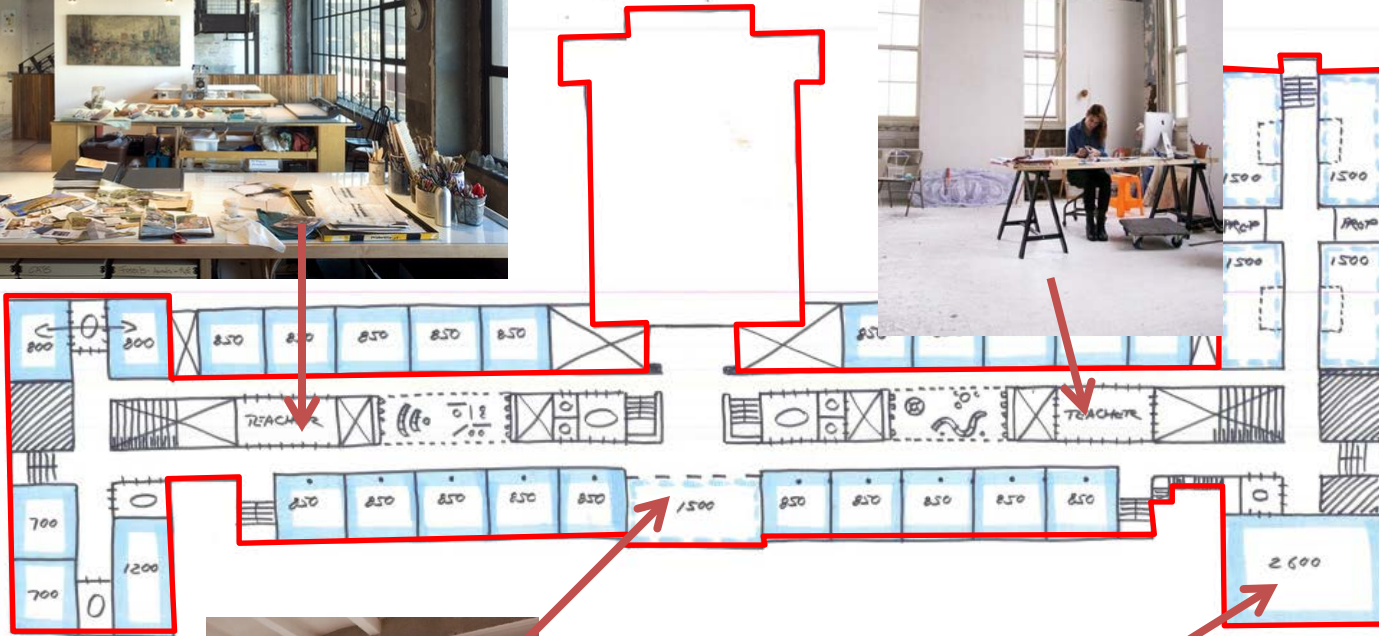
Planning Concepts in Historic Context



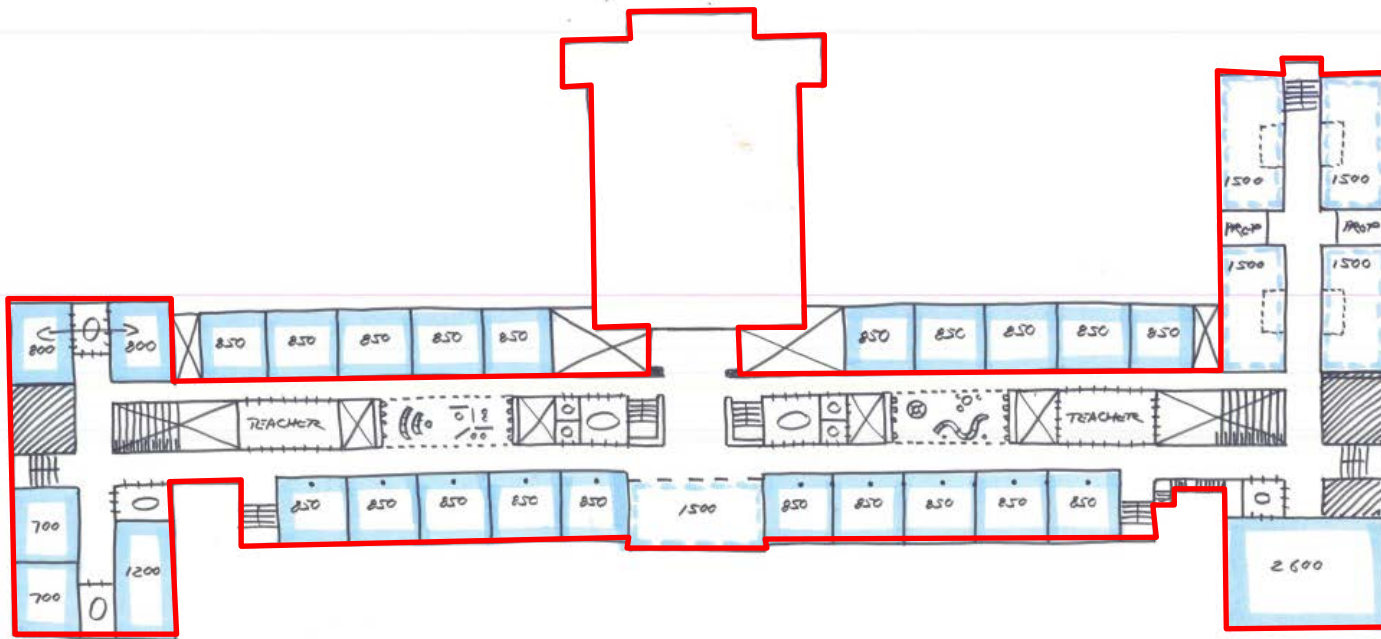
Planning Concepts in Historic Context



Planning Concepts in Historic Context

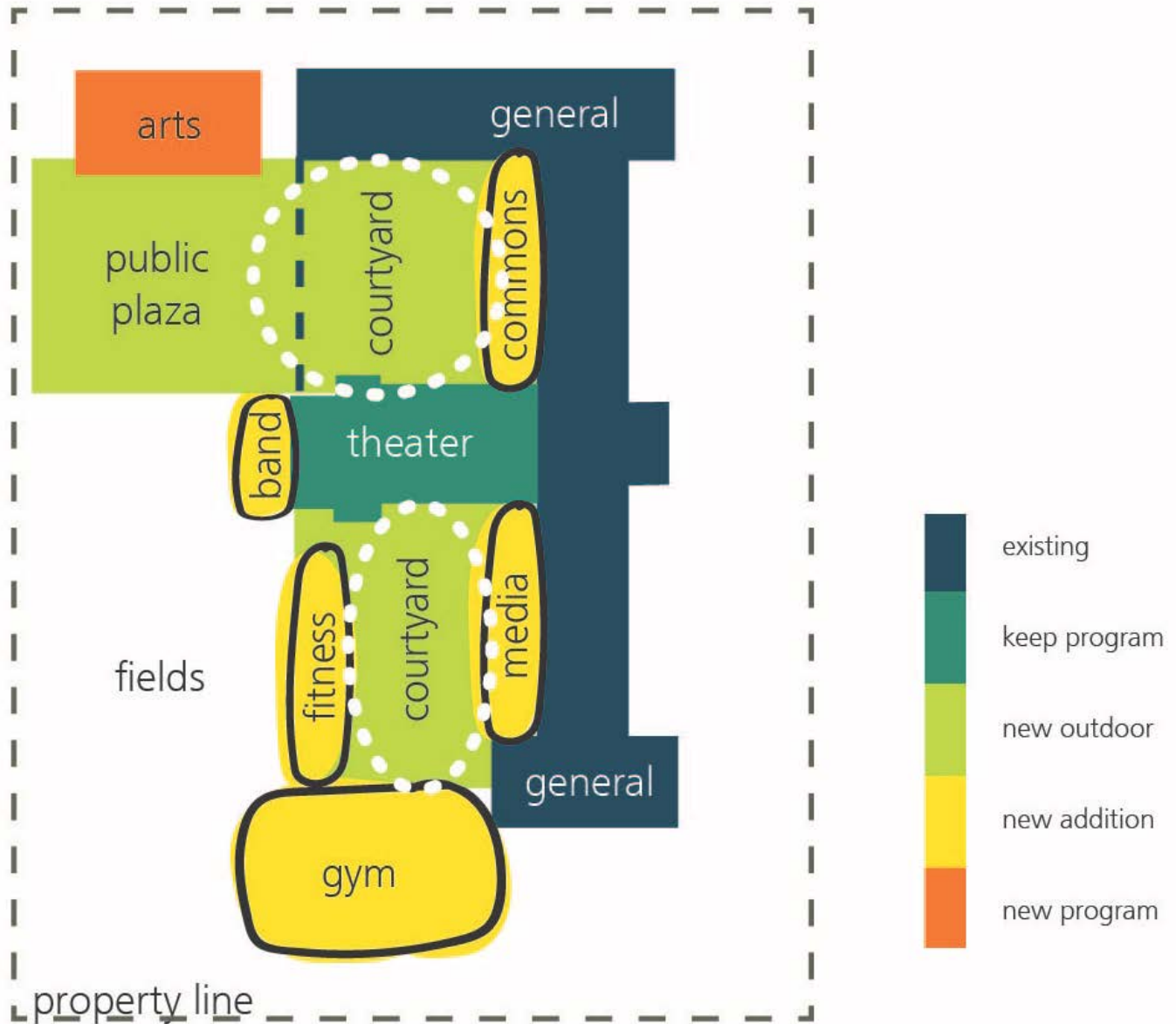


Planning Concepts in Historic Context

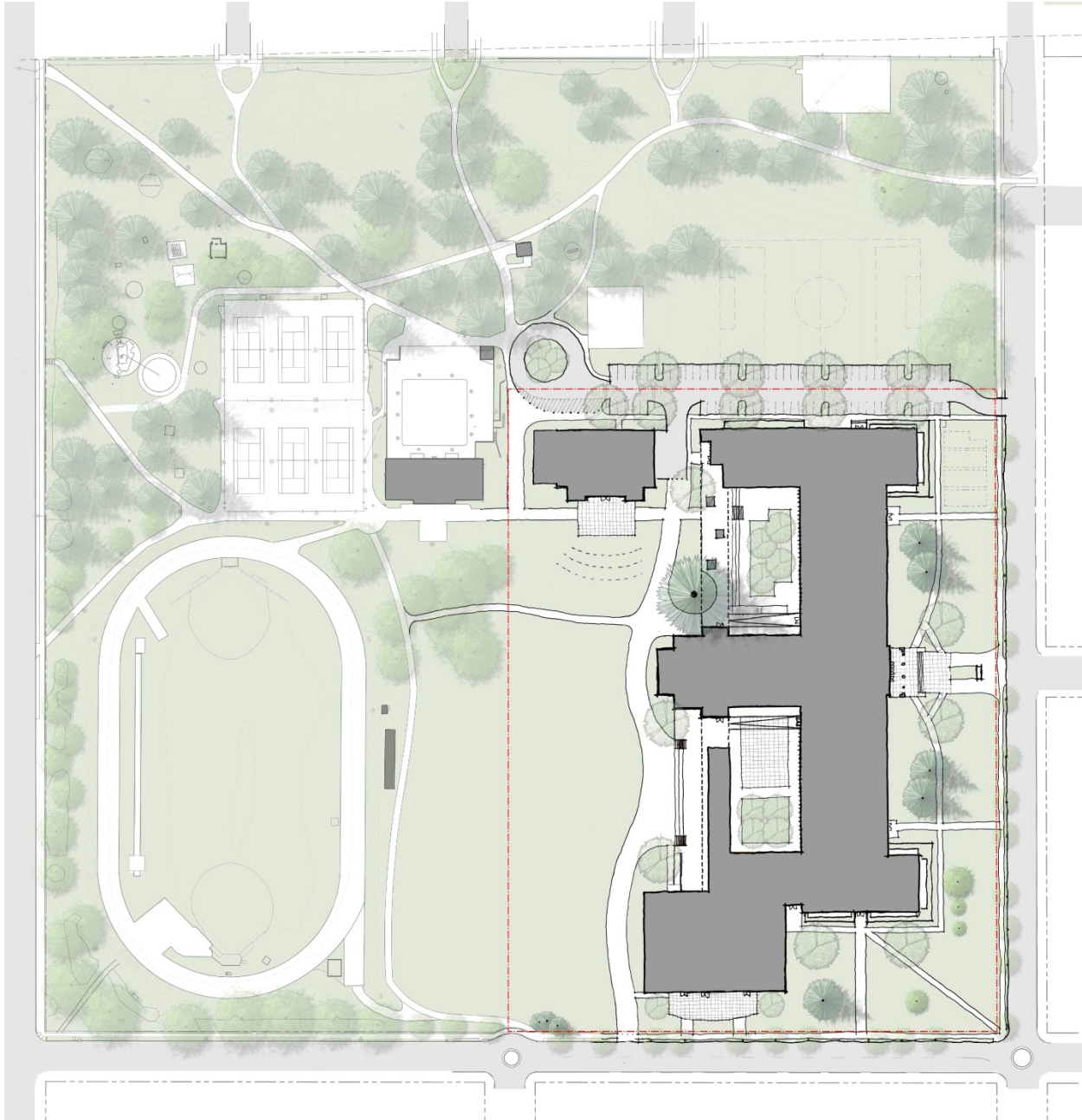


Architectural Design Principles | Planning

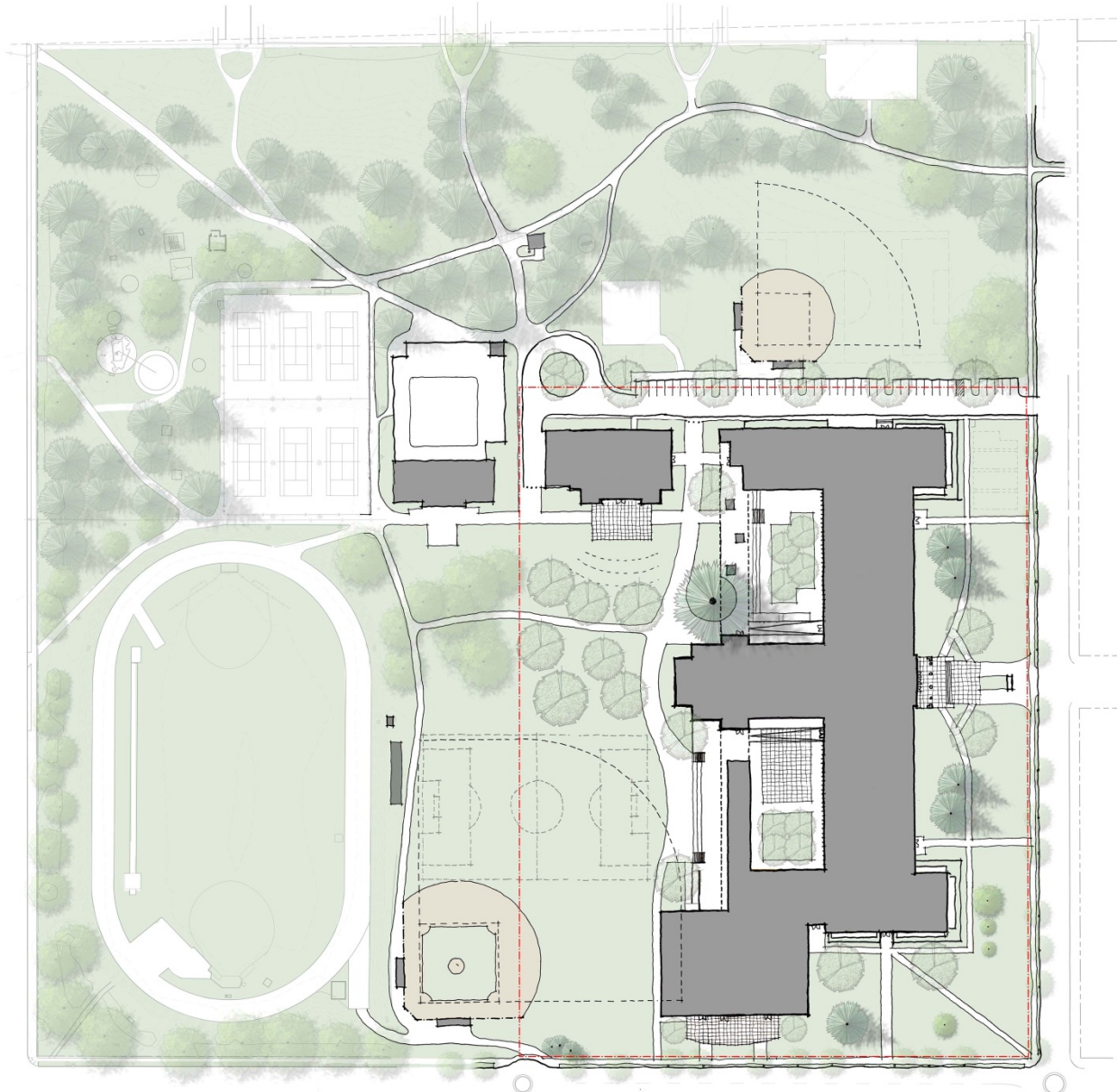
Preferred Masterplan Concept



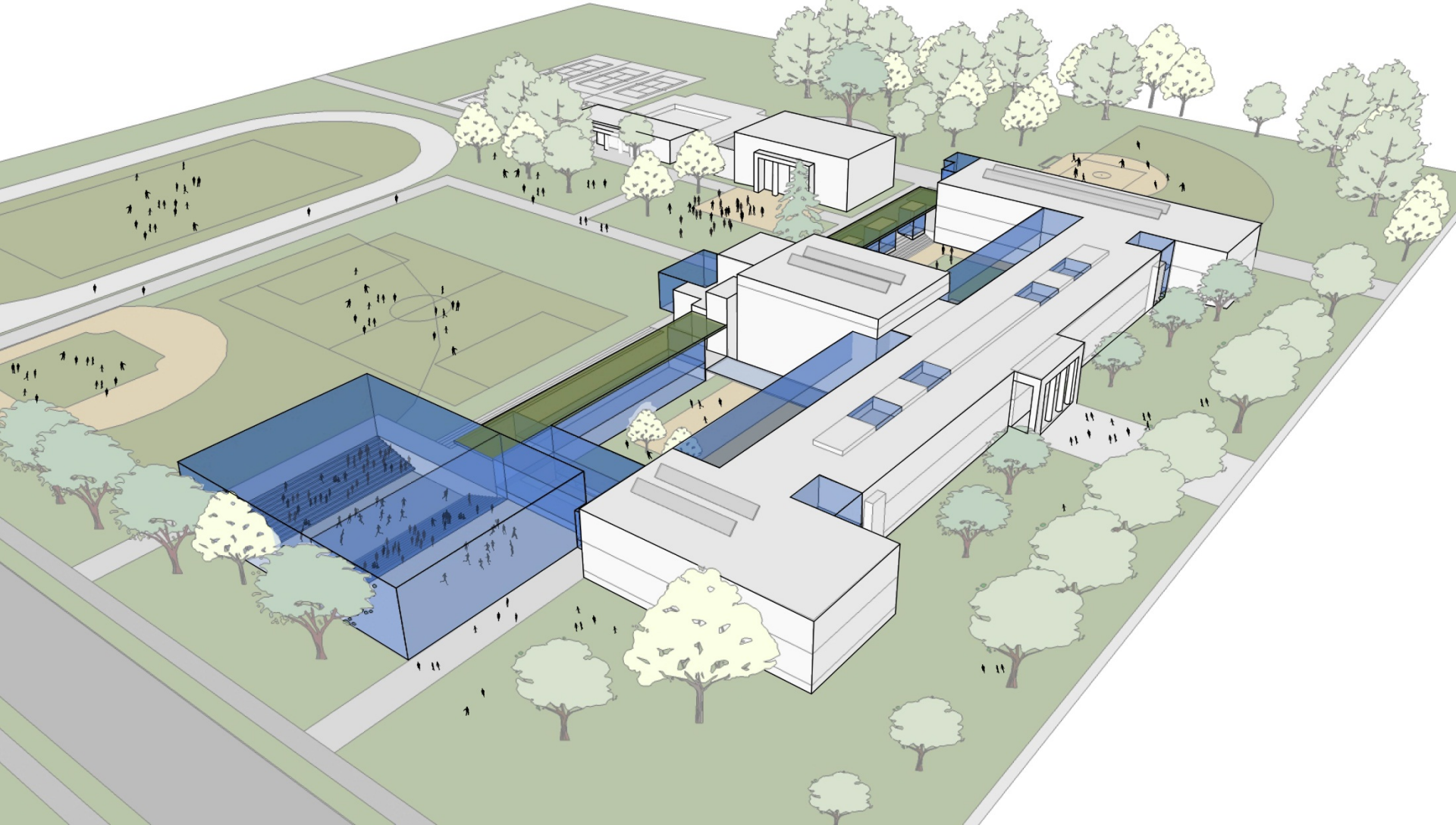
Preferred Site Concept



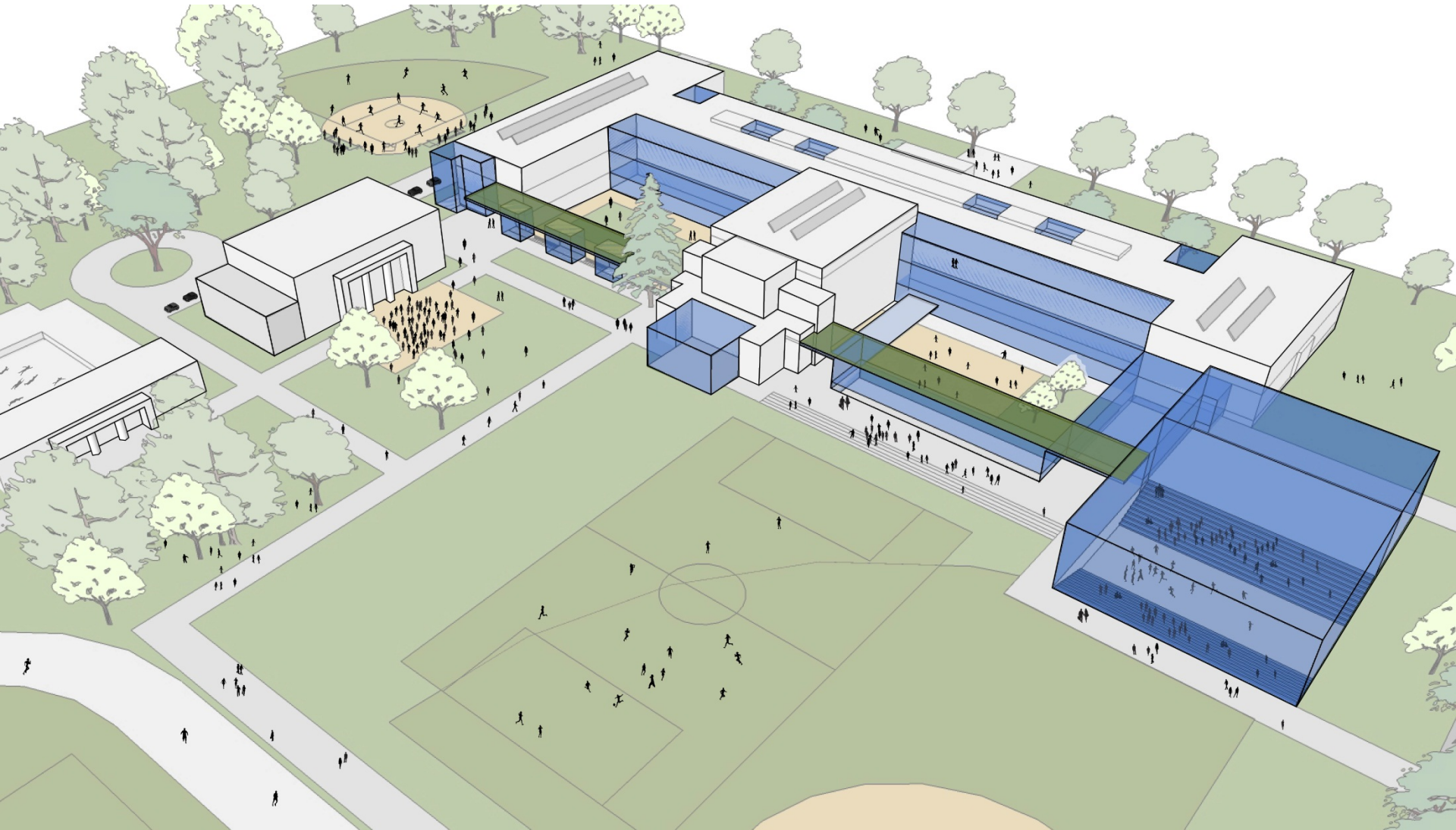
Preferred Site Concept



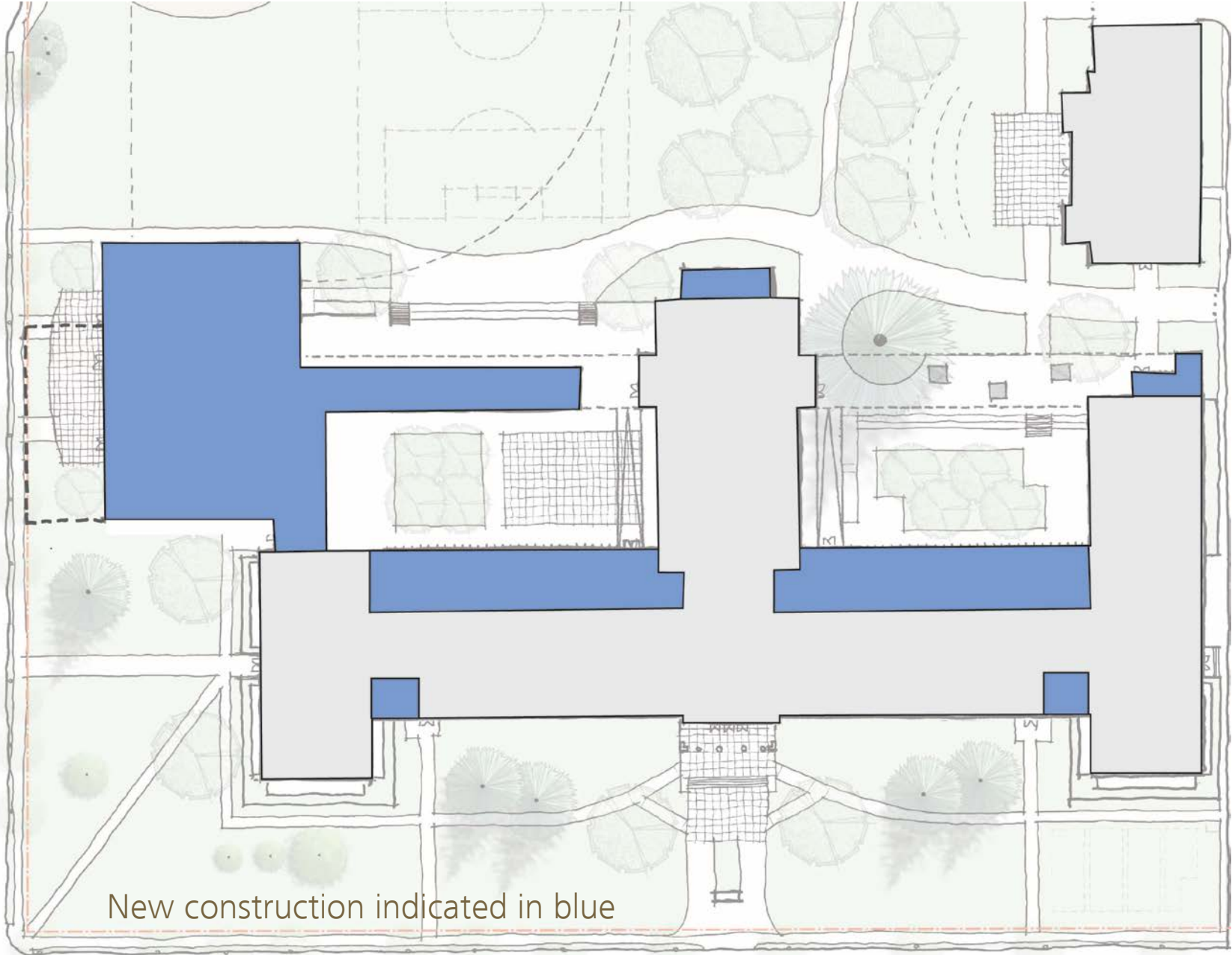
Preferred Massing



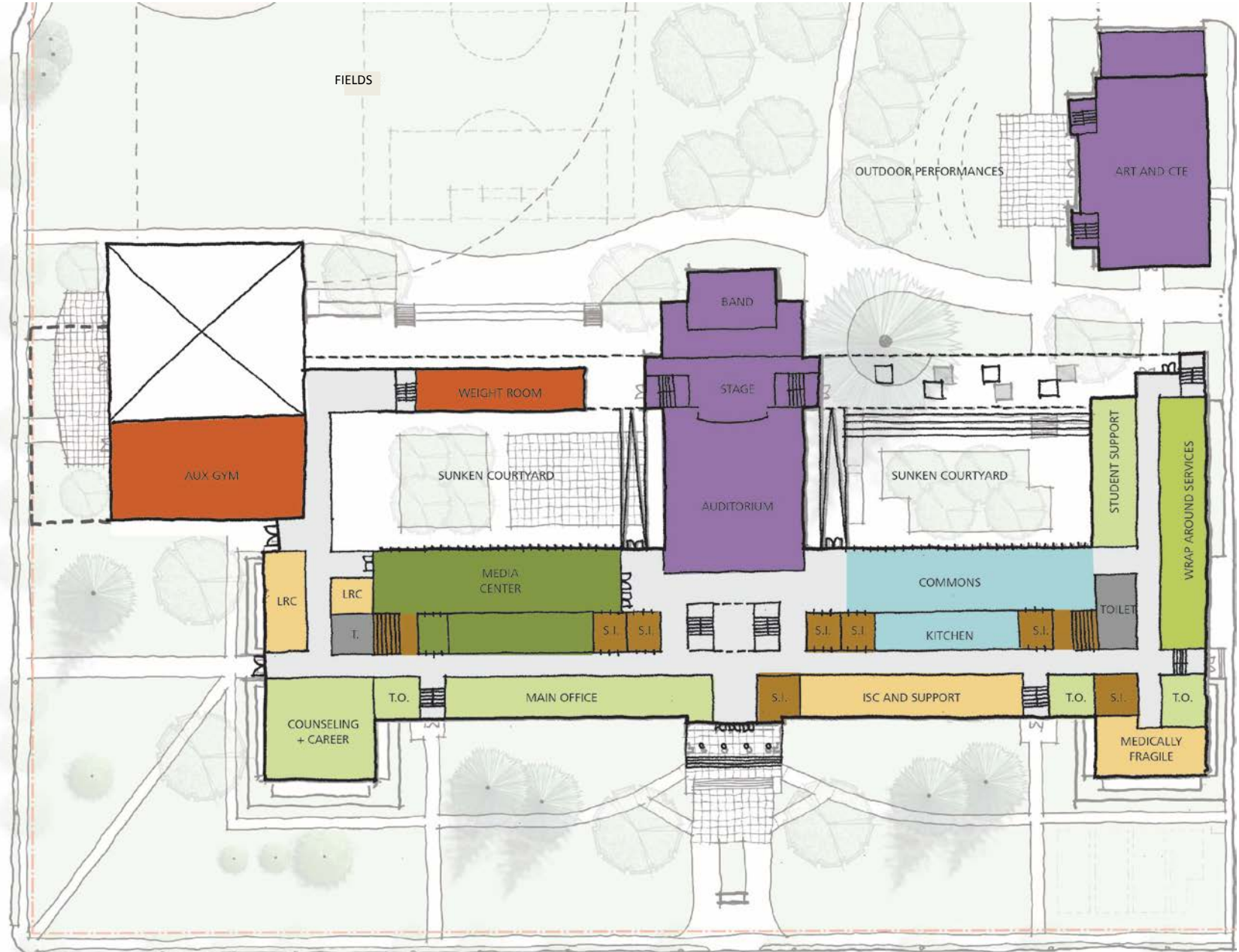
Preferred Massing



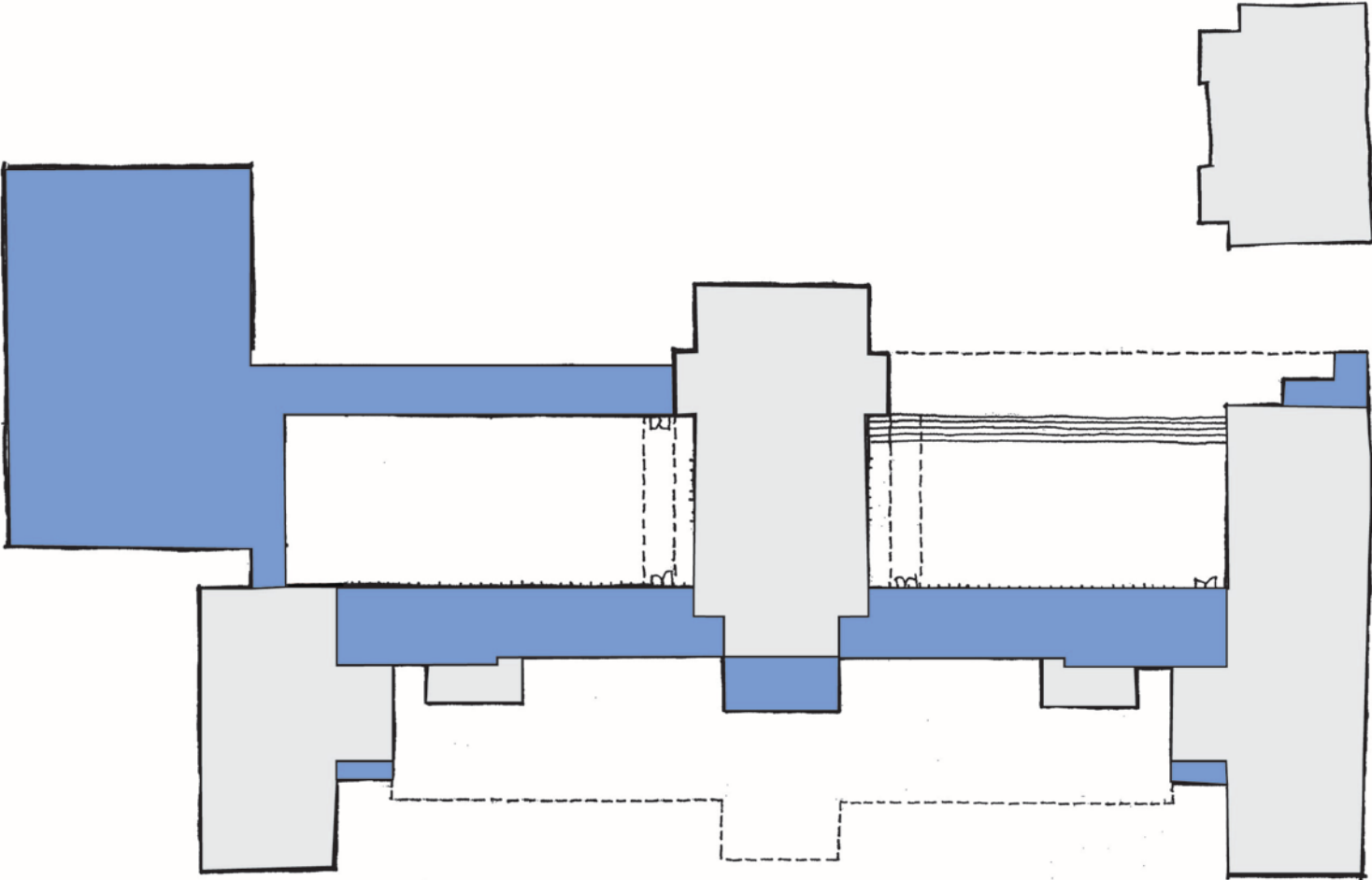
Preferred Organization :: Main Floor



Preferred Organization :: Main Floor

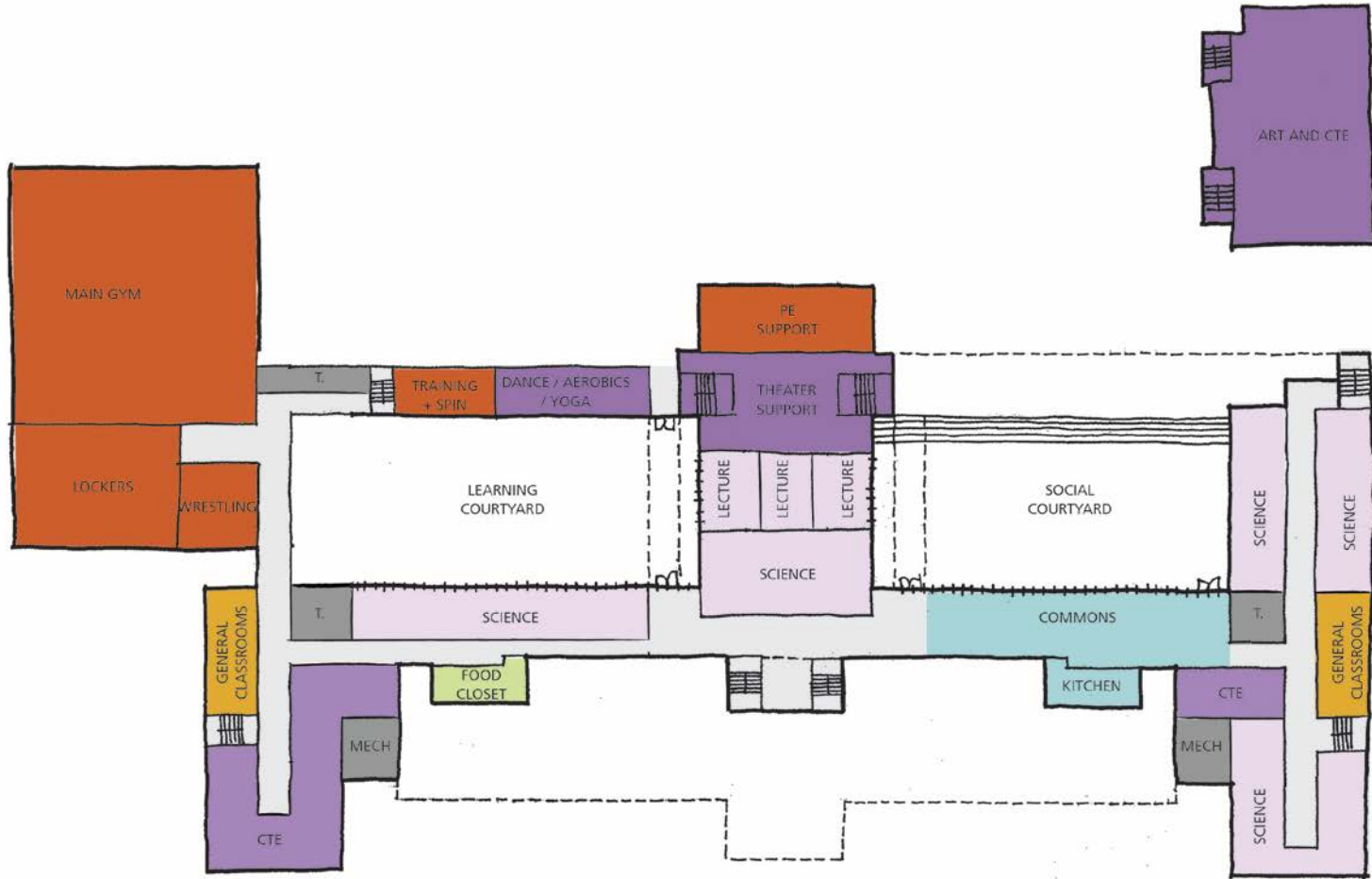


Preferred Organization :: Ground Floor

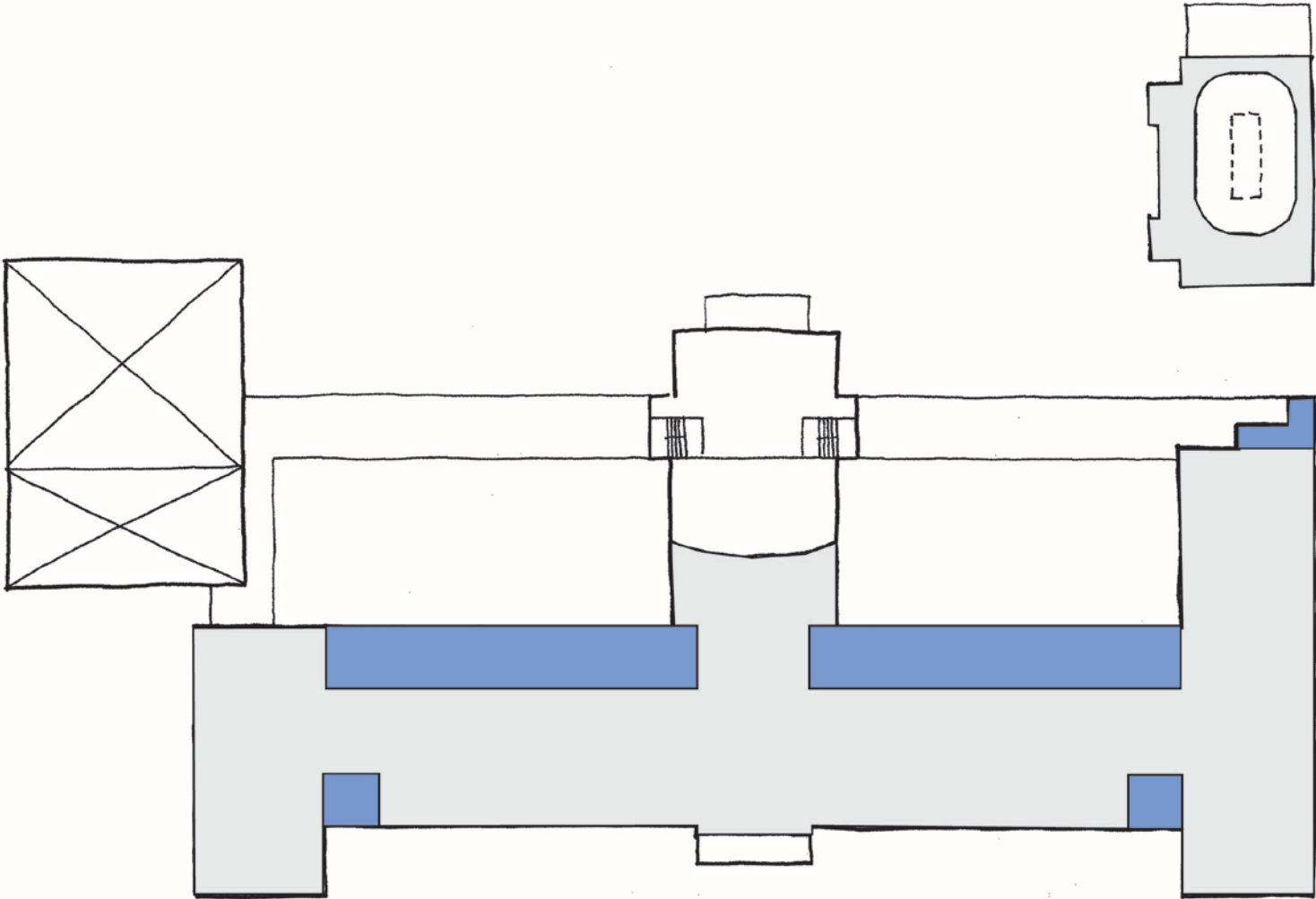


New construction indicated in blue

Preferred Organization :: Ground Floor

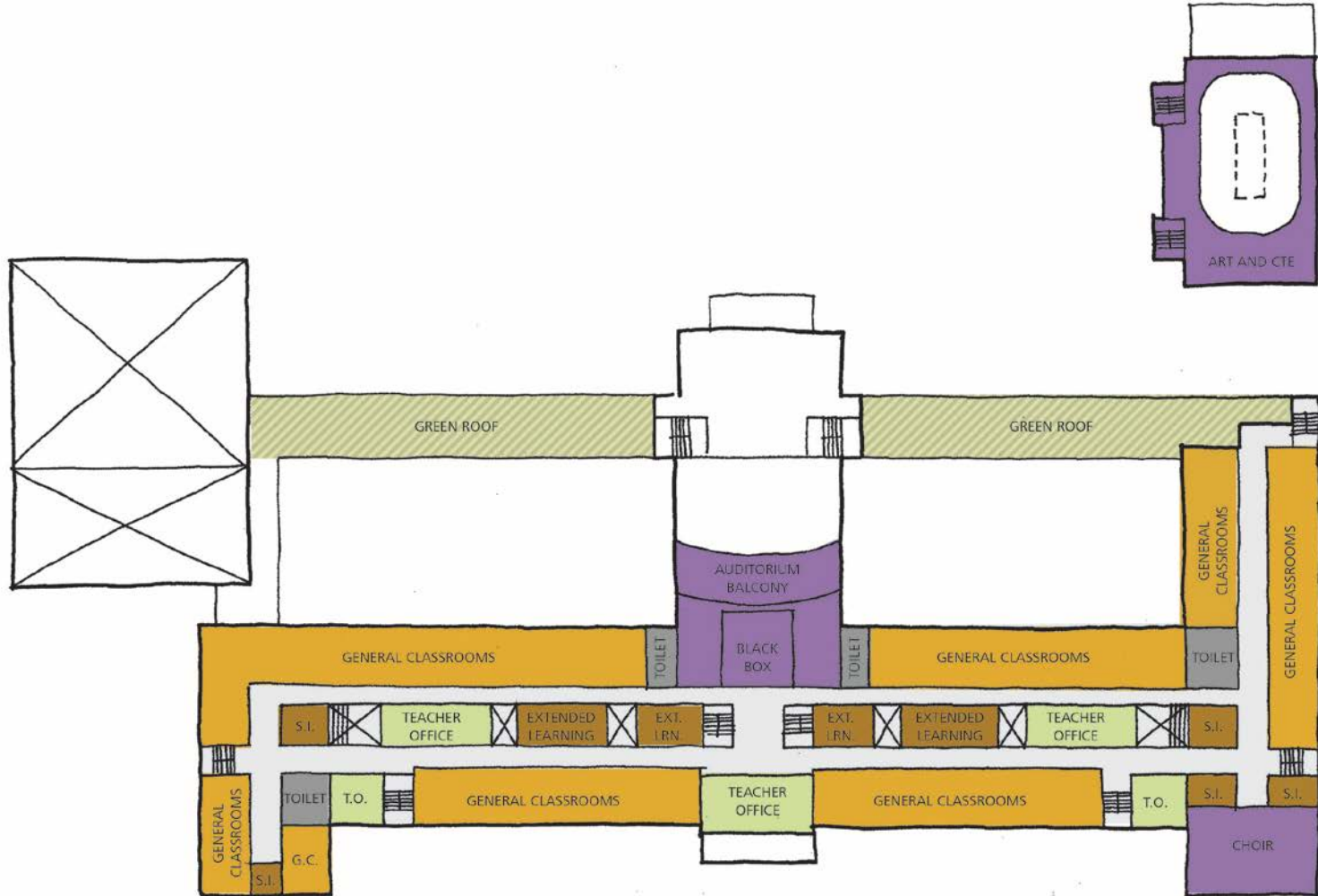


Preferred Organization :: Upper Floor



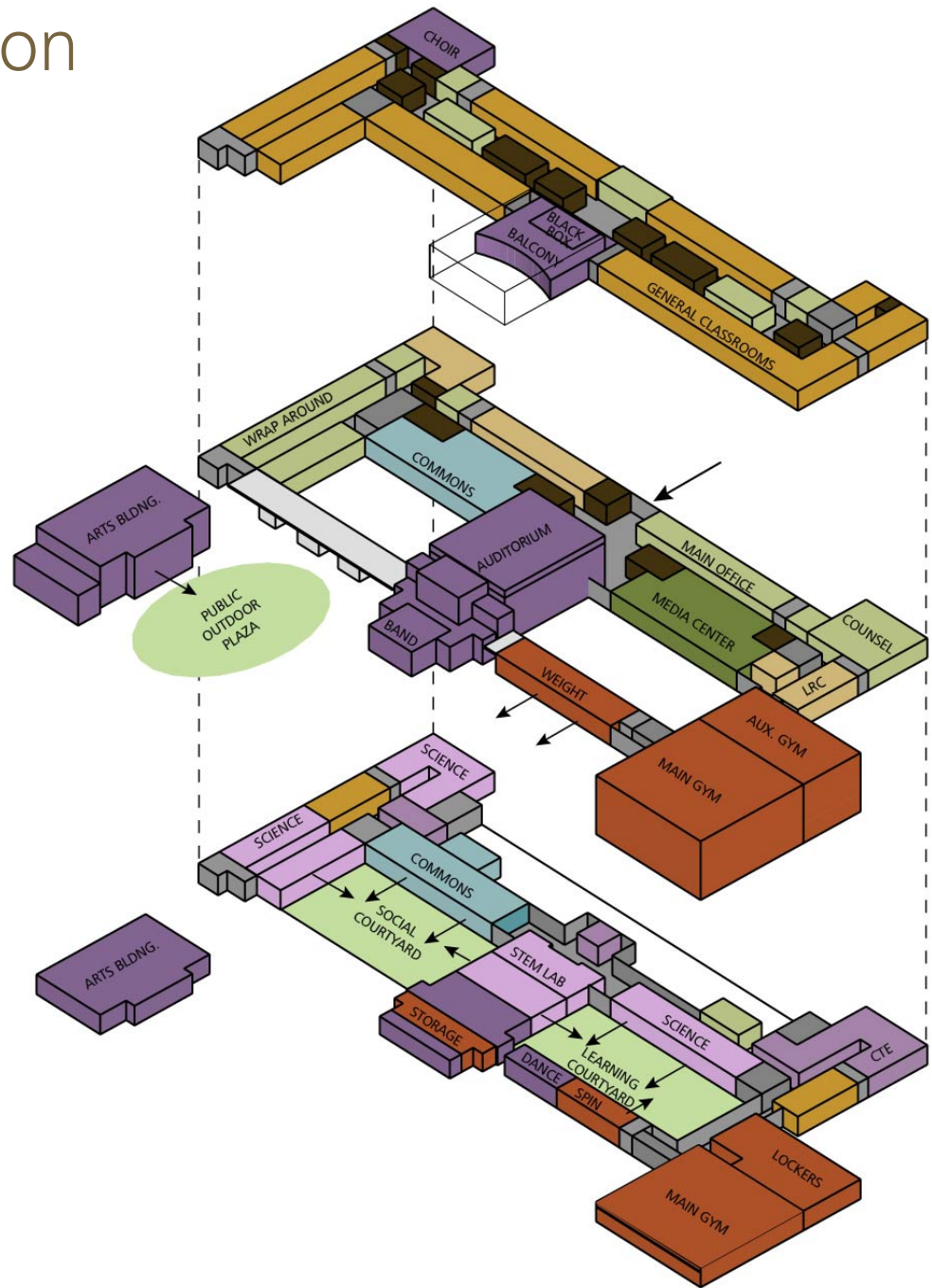
New construction indicated in blue

Preferred Organization :: Upper Floor

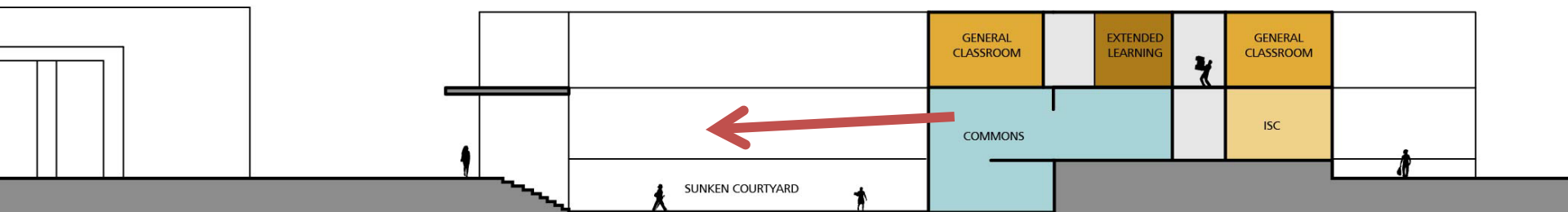
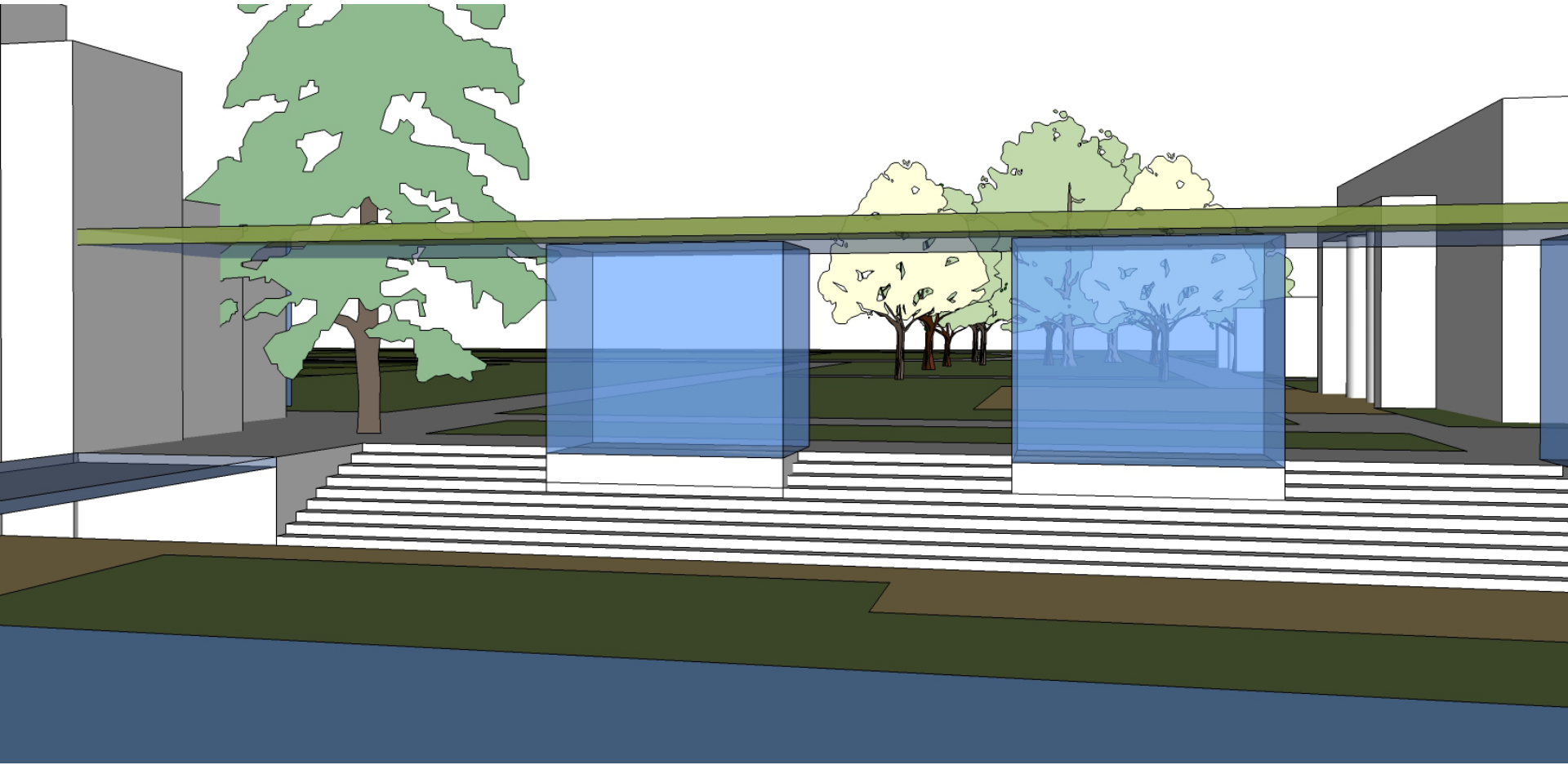


Preferred Organization

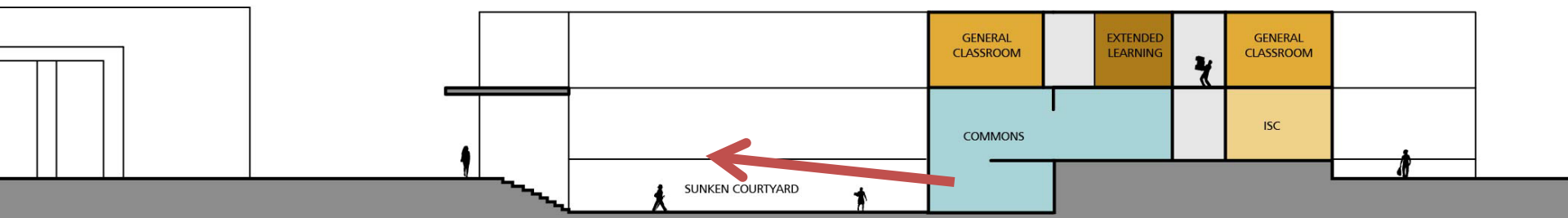
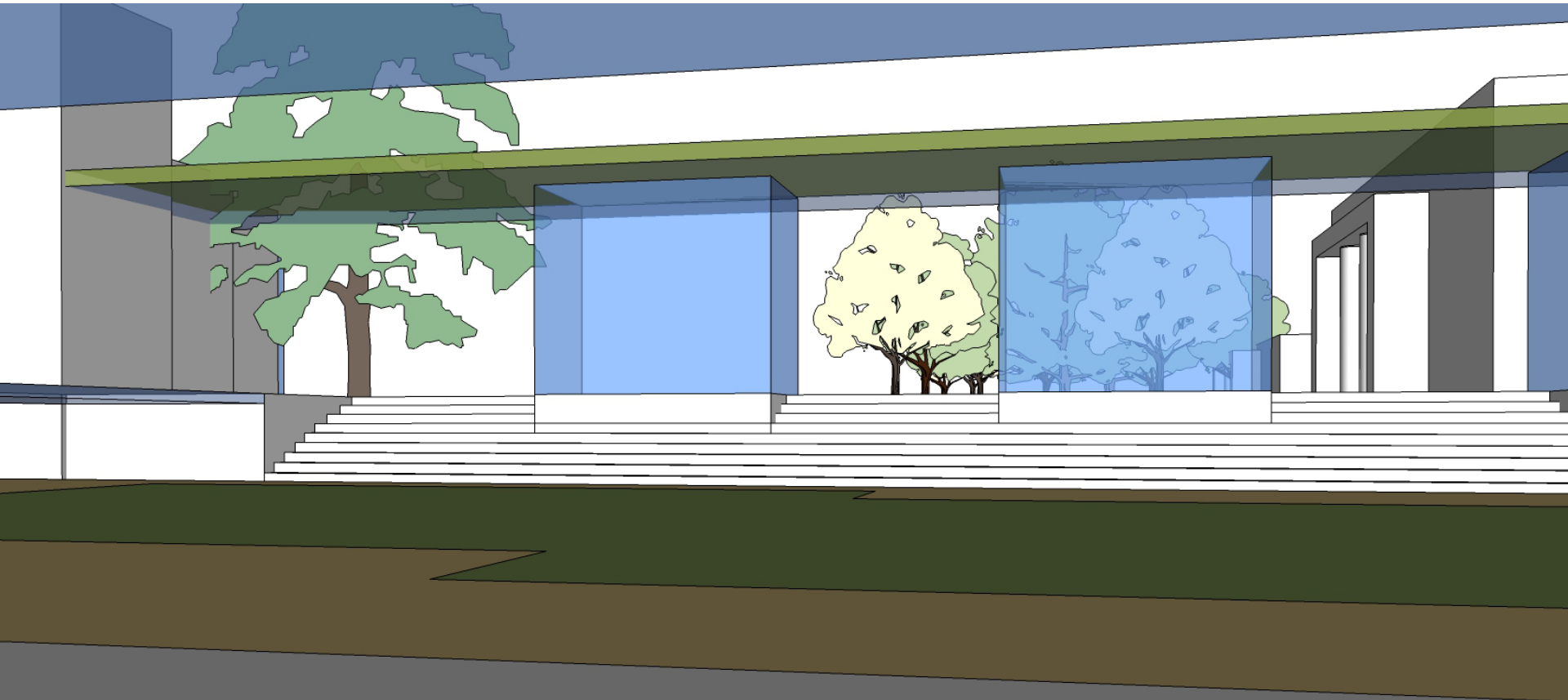
- EXTENDED LEARNING
- GENERAL CLASSROOMS
- MEDIA CENTER
- MEDICALLY FRAGILE AND ISC
- EDUCATION SUPPORT
- STUDENT COMMONS
- SCIENCES / SPECIALIZED CLASSROOMS
- PE / ATHLETICS
- FINE AND PERFORMING ARTS
- CAREER PREPARATION



Preferred Masterplan Concept



Preferred Masterplan Concept



Preferred Masterplan Concept

