

Celebrating the new Multiple Pathways to Graduation (MPG) hayu alqi uyxat Building



bassetti
architects

Spring 2024 Project Update

Construction of the hayu alqi uyxat building is in the final stages, and the entire site is filled with activity. Finishing touches are underway with utilities and technology being connected up, landscaping getting underway and furniture is starting to arrive. It is all coming together for the first day of school in late August.

Serving Diverse Student Needs

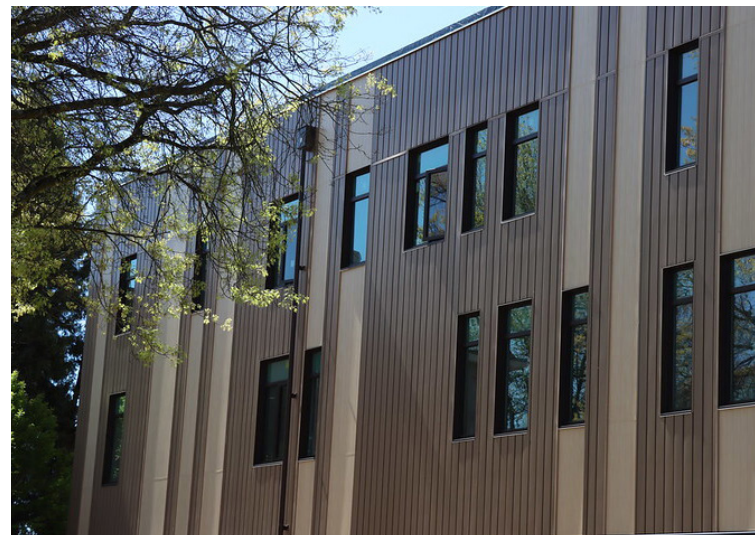
The new 85,000 SF multi-story building located at the corne of NE Glisan and NE 16th Avenue is the new home to PPS Multiple Pathways to Graduation (MPG) programs including Alliance High School at Kenton and Meek, DART/ Kuumba School, Teen Parent Services and Childcare, and Reconnection Services and Center. The facility unites these programs in a central location providing comprehensive support to students as they work their way to graduation.

hayu alqi uyxat Design Features

The building includes a 500-seat gymnasium, a makerspace, a rooftop deck, and a multi-age childcare center with an outdoor playground. Specialized CTE program facilities for automotive, manufacturing, culinary, natural resources and digital media.

Innovative Earth Friendly Building

hayu alqi uyxat is an all-electric powered building that also has a solar array on the roof and the bike canopy to generate some of its own electricity. It's Mass Timber construction combined with natural daylight and increased energy efficiency significantly lowers the school's carbon footprint. Principles of trauma informed design were also used to create an environment that supports the diverse needs of the MPG students.



Grand Opening Celebration

Join us on Saturday, September 21st, 2024 at 10:00 a.m. for a very special celebration. Tours of the building will follow the ribbon cutting ceremony.



Visit the MPG project
website for more information
www.pps.net/Page/14873