

mahlum

Design Advisory Group Meeting 09
Grant High School Modernization
04.28.16



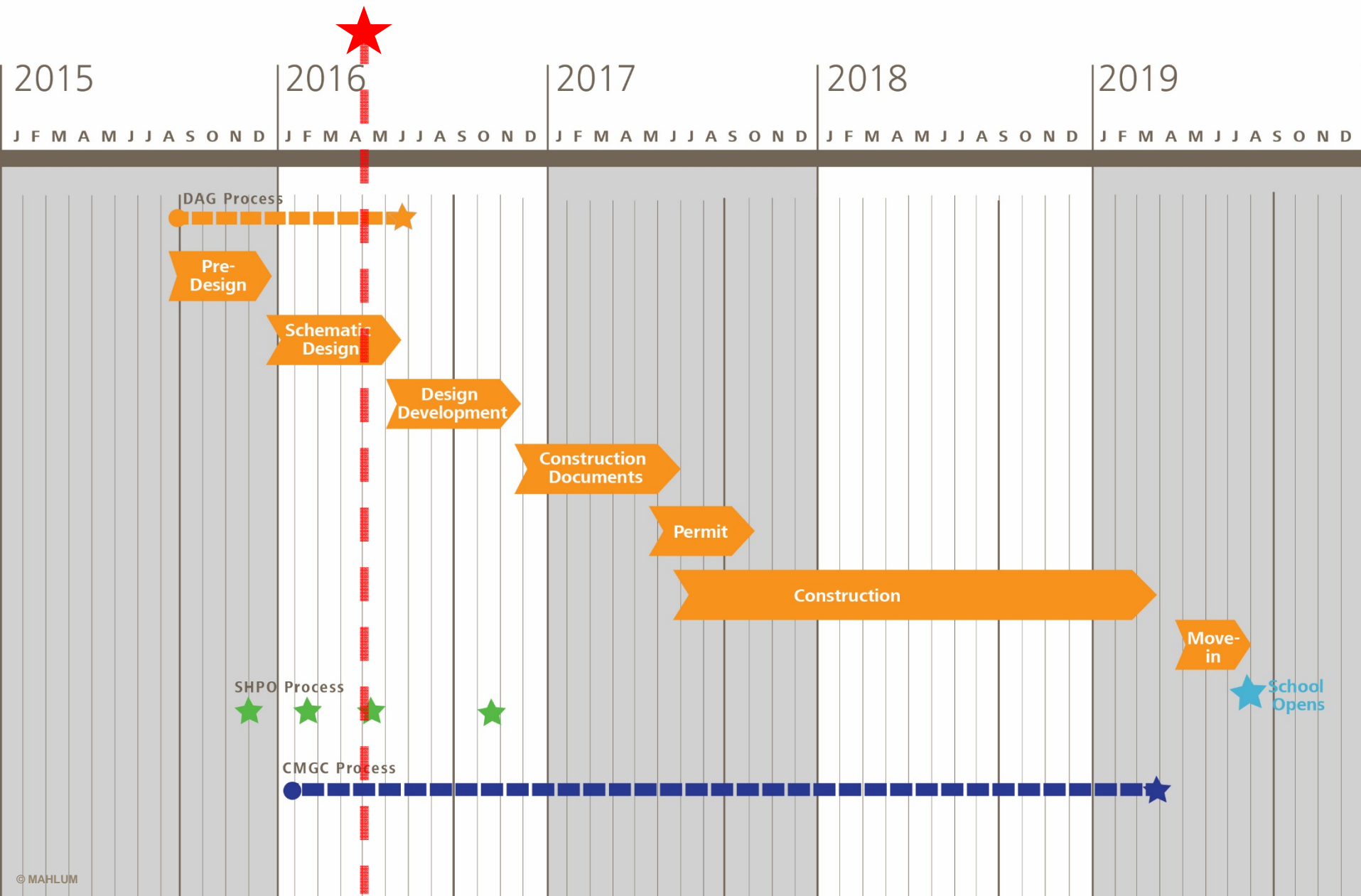


Schedule

DAG 01	Sep 09	S.I.B.C. Meeting	Dec 08
DAG 02	Sep 24	School Board	Dec 15
DAG 03	Oct 08	DAG 06	Dec 16
School Tours	Oct 23	SD Workshop 1*	Jan 09
MP Workshop 1*	Oct 24	DAG 07	Jan 21
DAG 04	Nov 05	DAG 08	Mar 03
MP Workshop 2*	Nov 07	DAG Thank You	Mar 04
DAG 05	Nov 19	SD Workshop 2*	Mar 05
MP Open House*	Dec 03	DAG 09	Apr 28
		SD Open House*	May 26

*Community Focused Meetings

Project Schedule





Agenda

Site Development

- Bike Parking

Building Development

- Focus on Interiors

- Focus on CTE

- Gender Inclusive Restroom Proposal

DAG Process Moving Forward

Public Comment

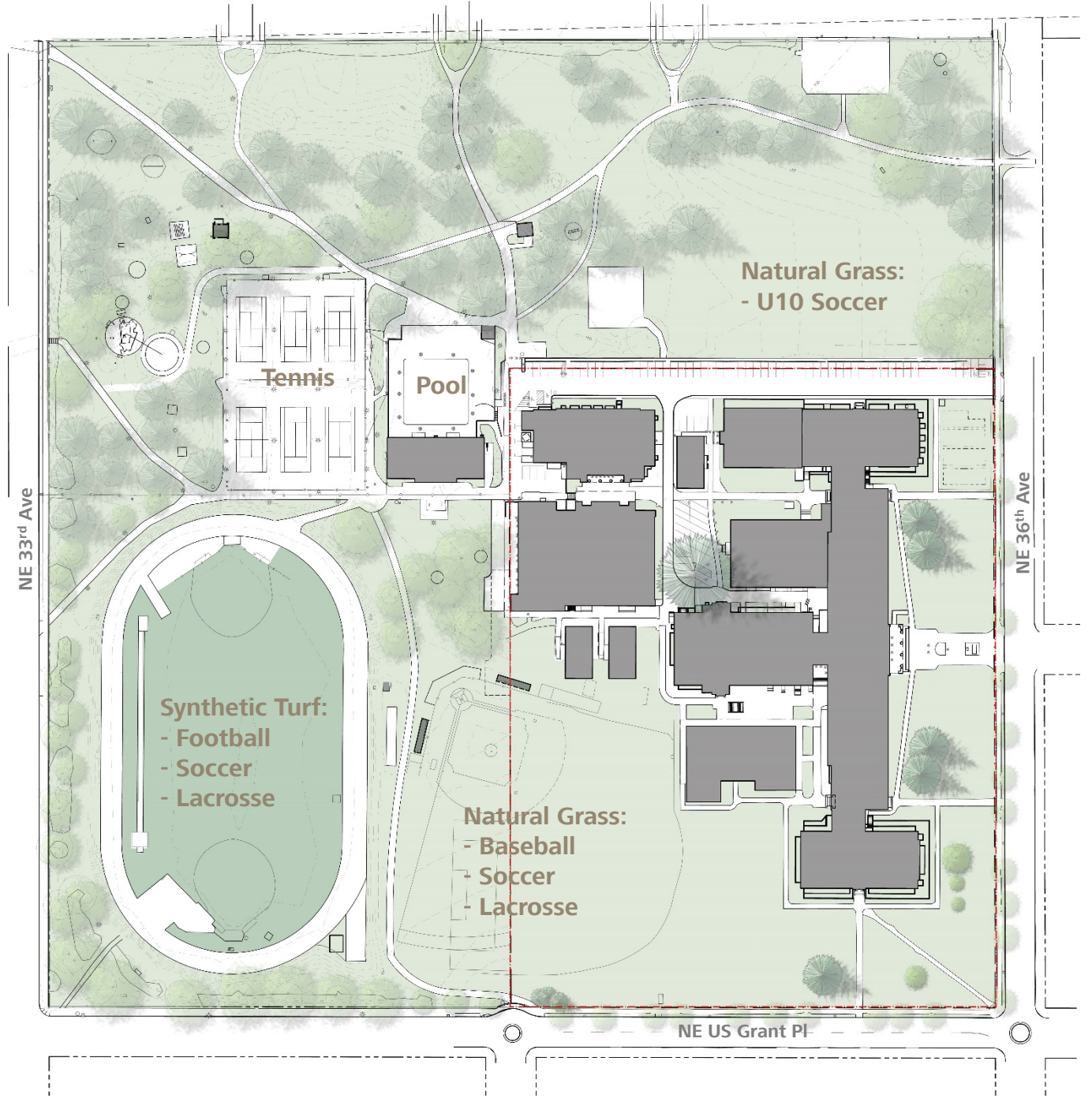
DAG Project Goals

- 1 Sustain a student-centered approach, where all learners feel connected by celebrating diversity and inclusion
 - 2 Design a building to inspire learning, to serve as a place of possibility
- TIE
- 2 Support the educational mission of Grant with a variety of flexible study & project spaces that anticipate future needs
 - 4 Accommodate diverse teaching & learning styles to facilitate strong relationships
 - 5 Create state-of-the-art facilities for all disciplines

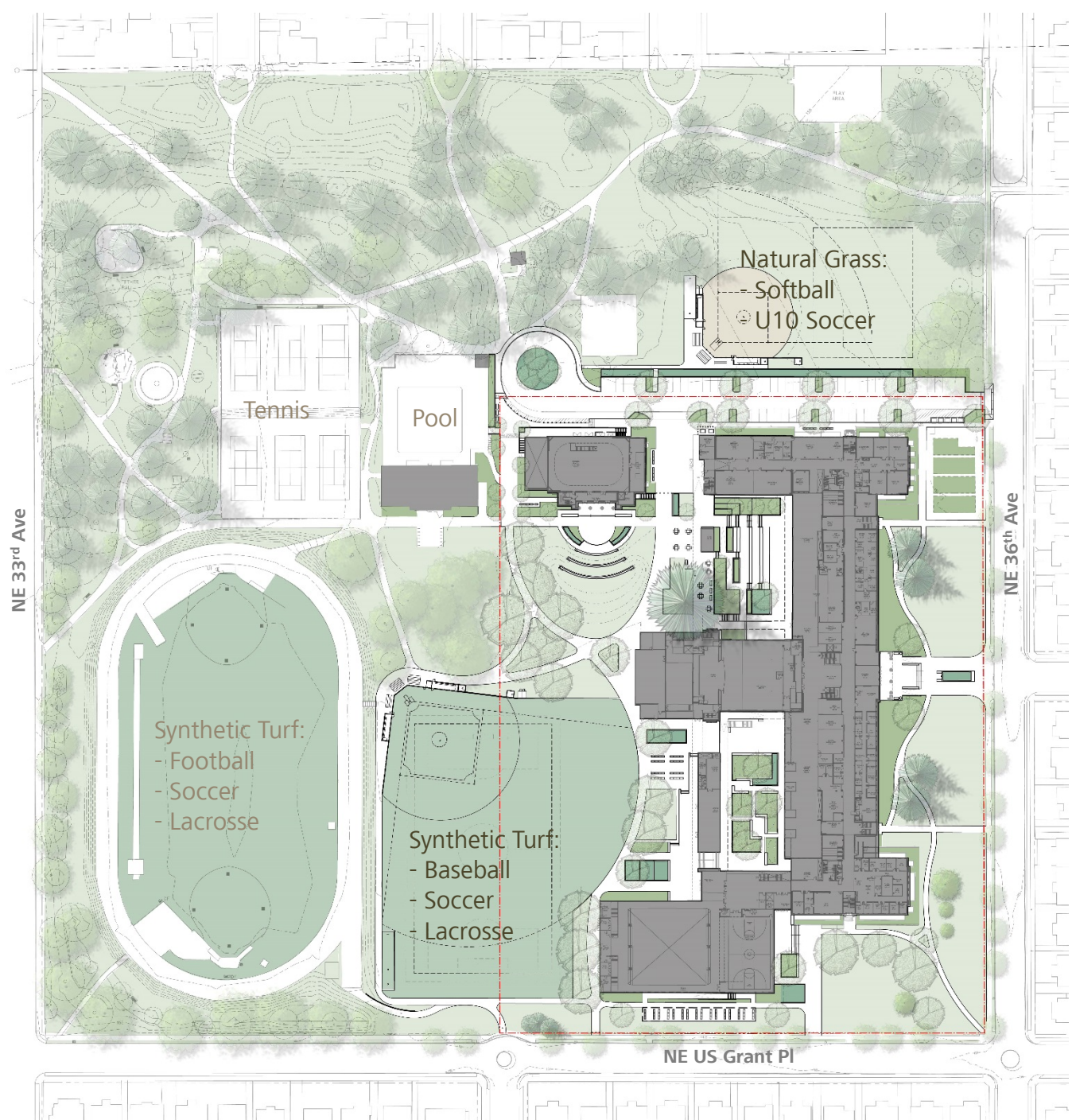
The Grant High School modernization will result in an inclusive learning environment that fosters strong, productive relationships among students, teachers, and the community through inspiring, flexible spaces that honor the history while supporting students' success in college, career, and life.

Site Development

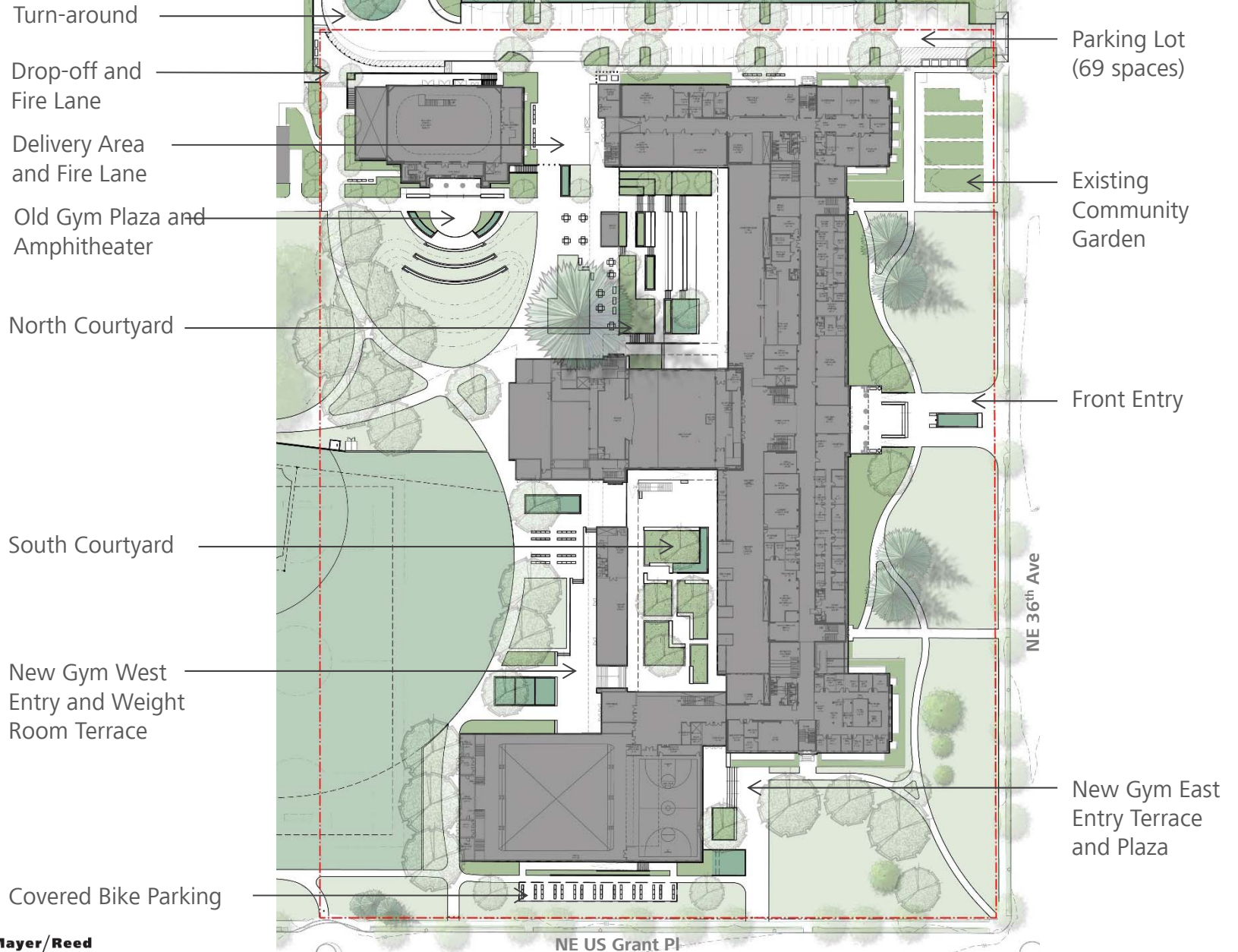
Existing Site Plan



Proposed Site Plan

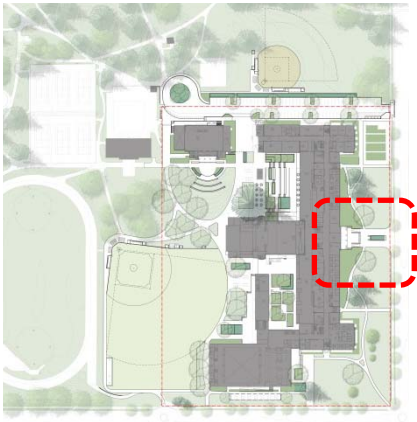
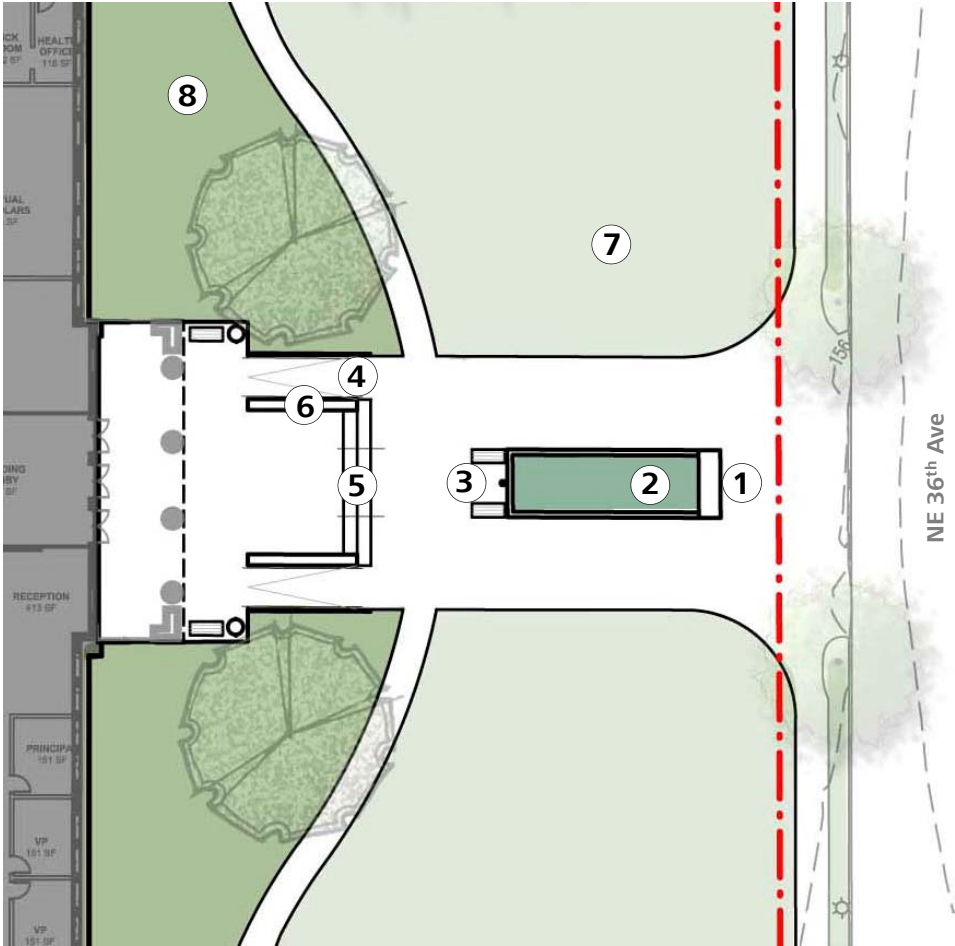


Site Plan

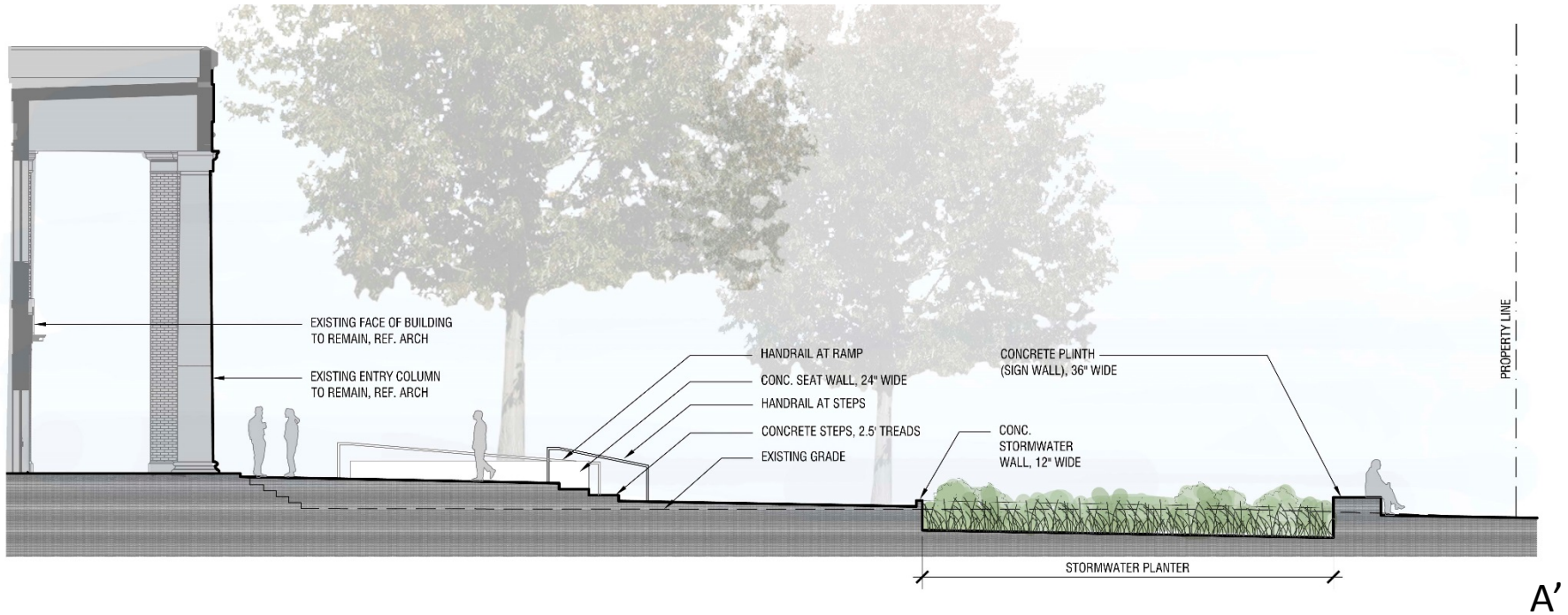
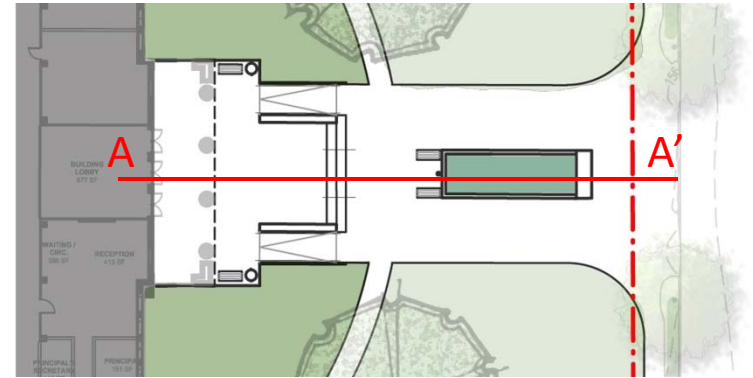


Main Entry

- 1 Wide Seat Wall / Sign Wall
- 2 Stormwater Planter
- 3 Memorial Benches and Flagpole
- 4 Ramp
- 5 Steps
- 6 Seat Wall
- 7 Lawn
- 8 Shrubs



Main Entry

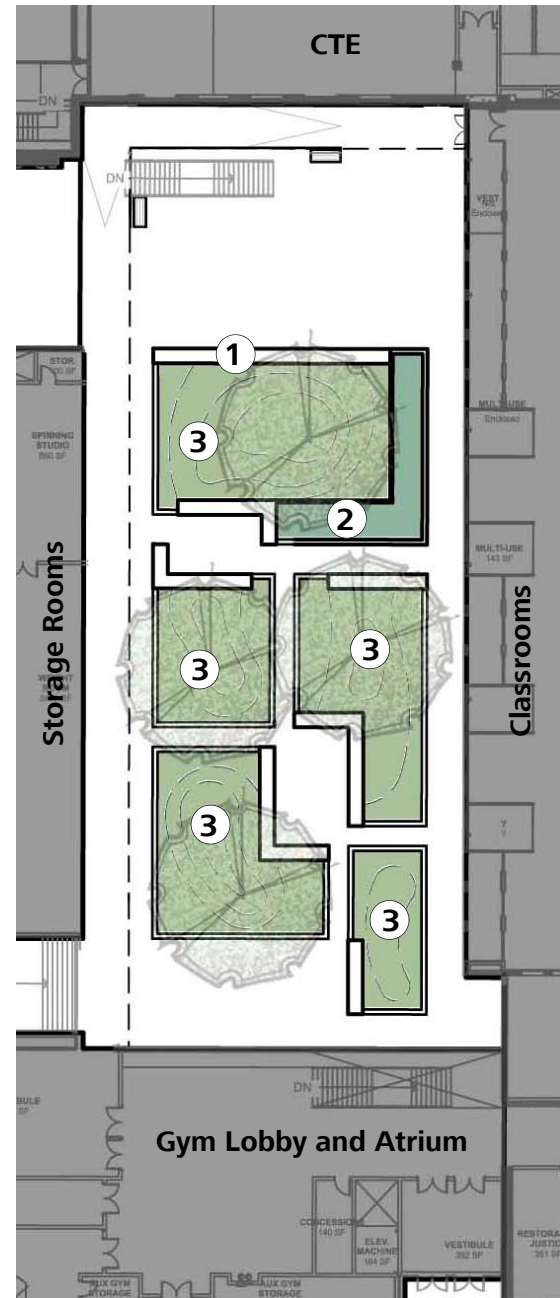
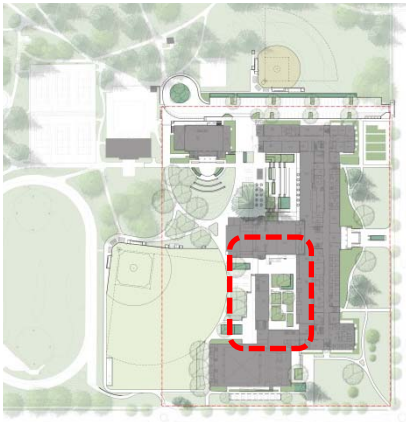


A

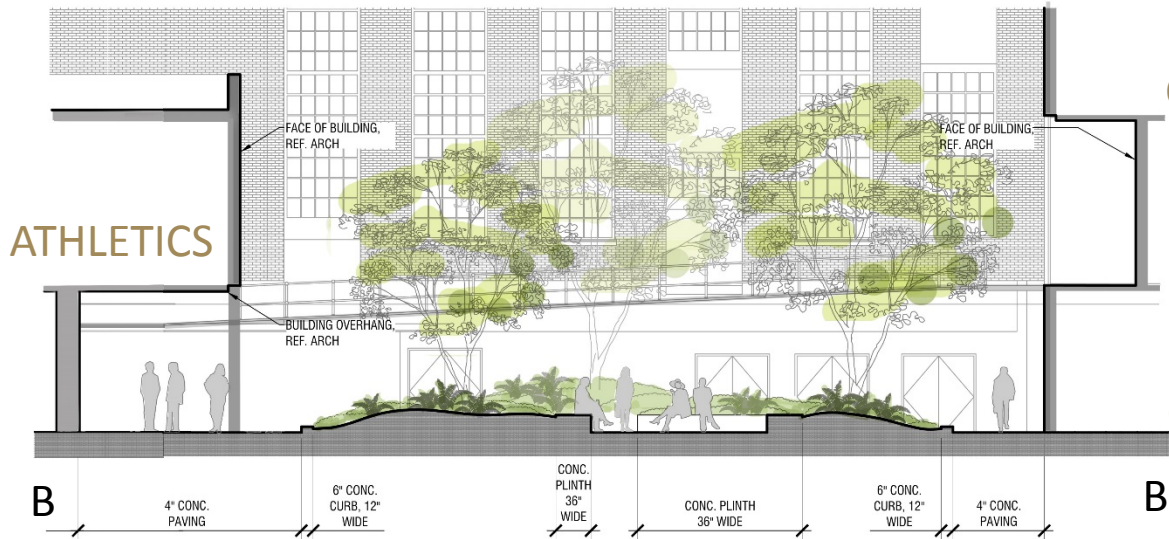
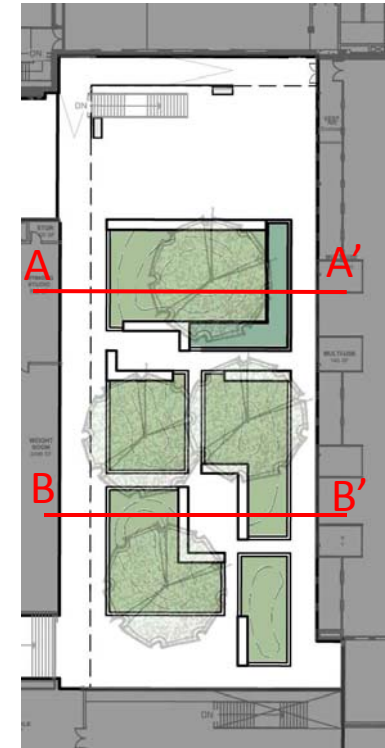
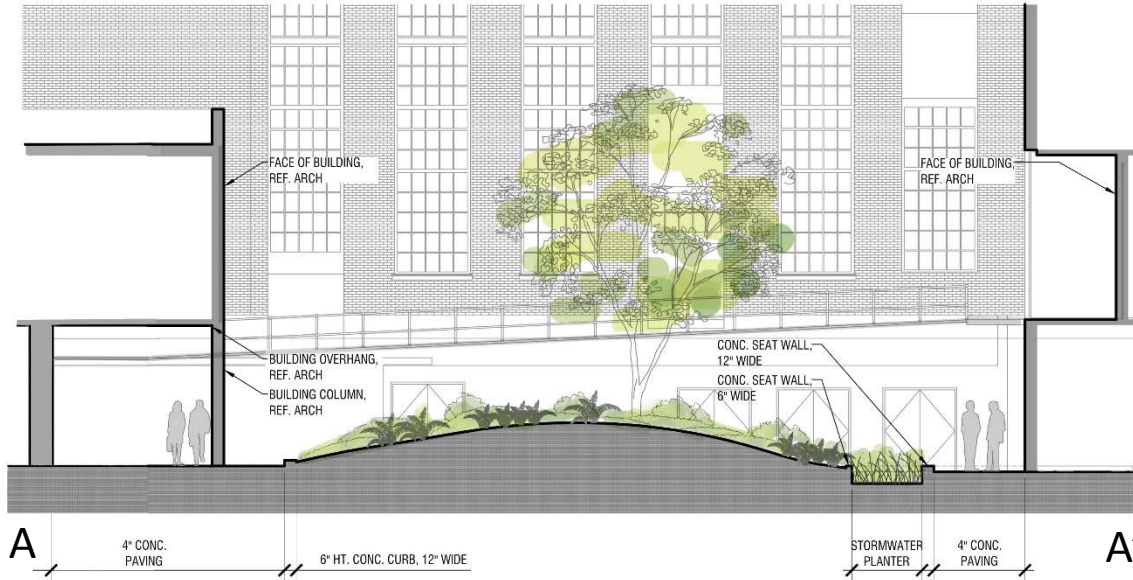
A'

South Courtyard

- 1 Wide Seat Wall
- 2 Stormwater Planter
- 3 Vegetated Mounds



South Courtyard

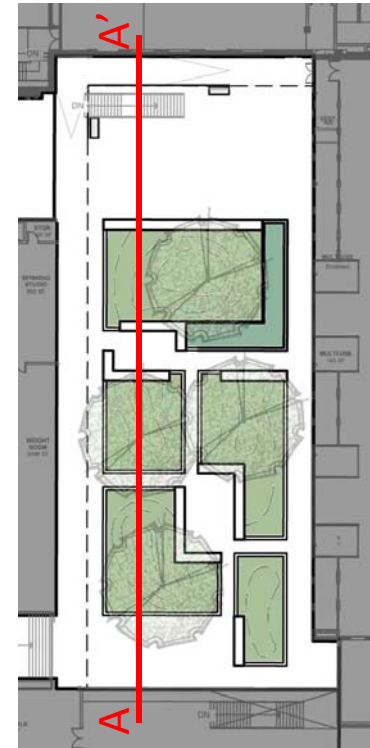


CLASSROOMS

LIBRARY

CLASSROOMS

South Courtyard

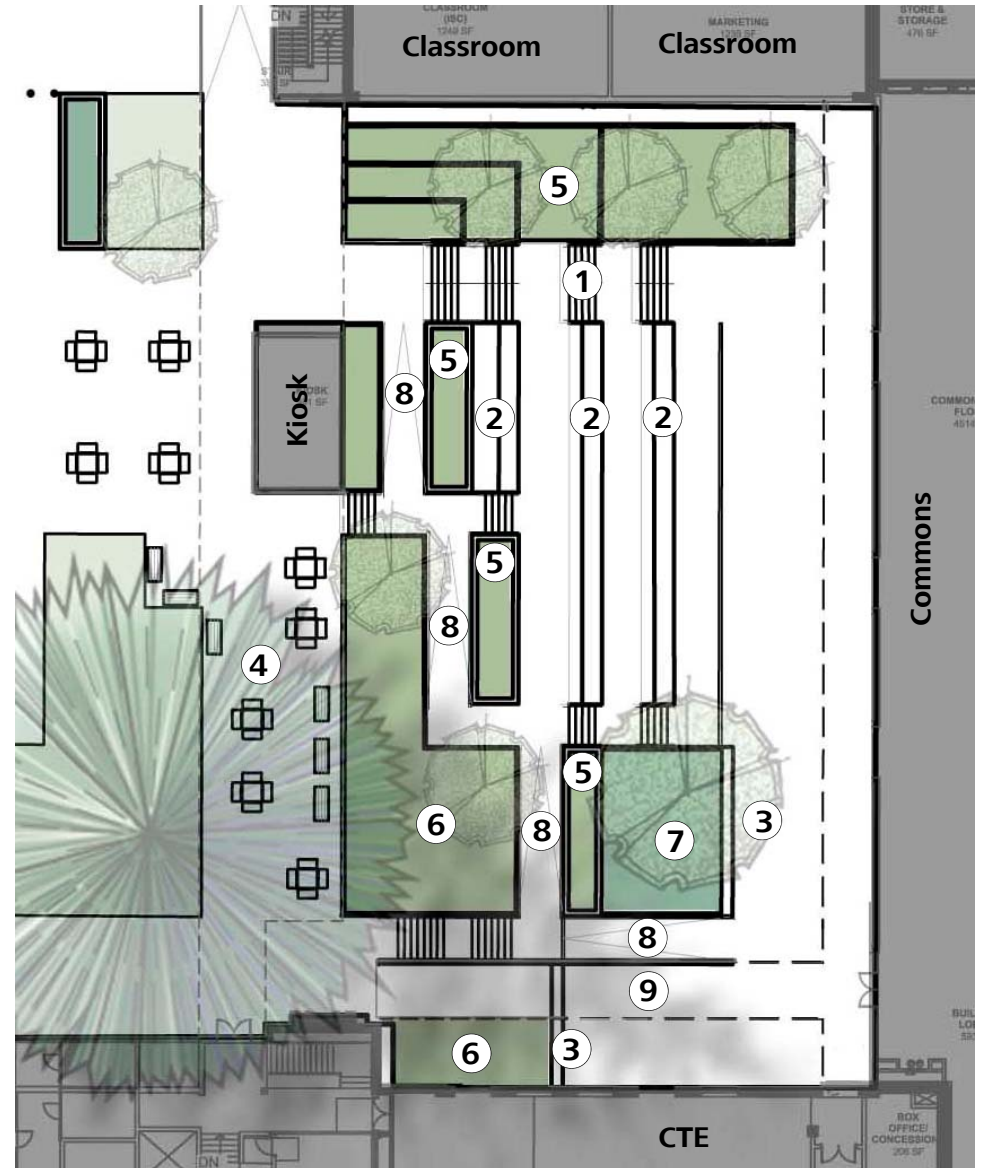
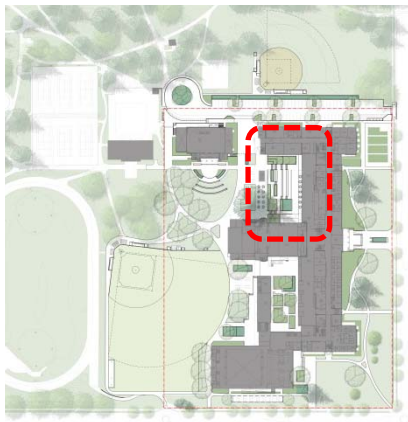


GYM
LOBBY



North Courtyard

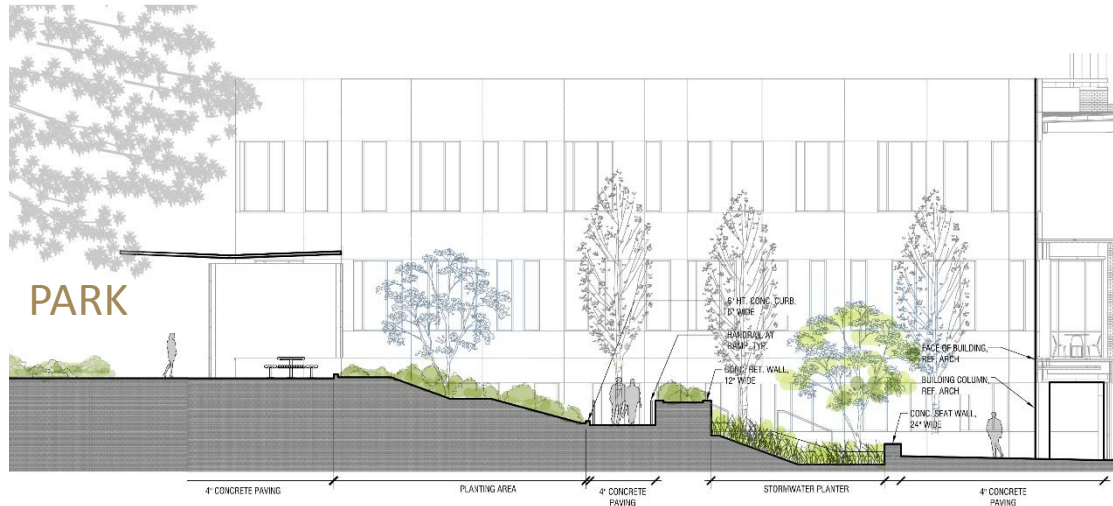
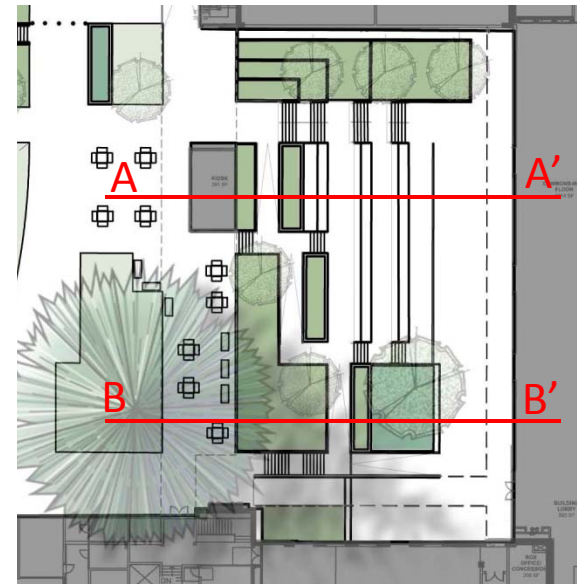
- 1 Steps
- 2 Stadium Seating
- 3 Seat Wall
- 4 Fixed Seating
- 5 Raised Planter
- 6 Sloped Planting Area
- 7 Stormwater Planter
- 8 Ramp
- 9 Ramp (overhead)



North Courtyard



A A'

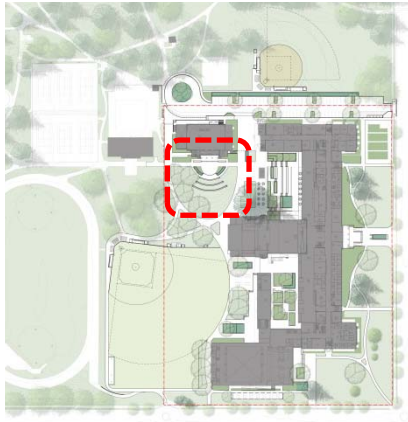
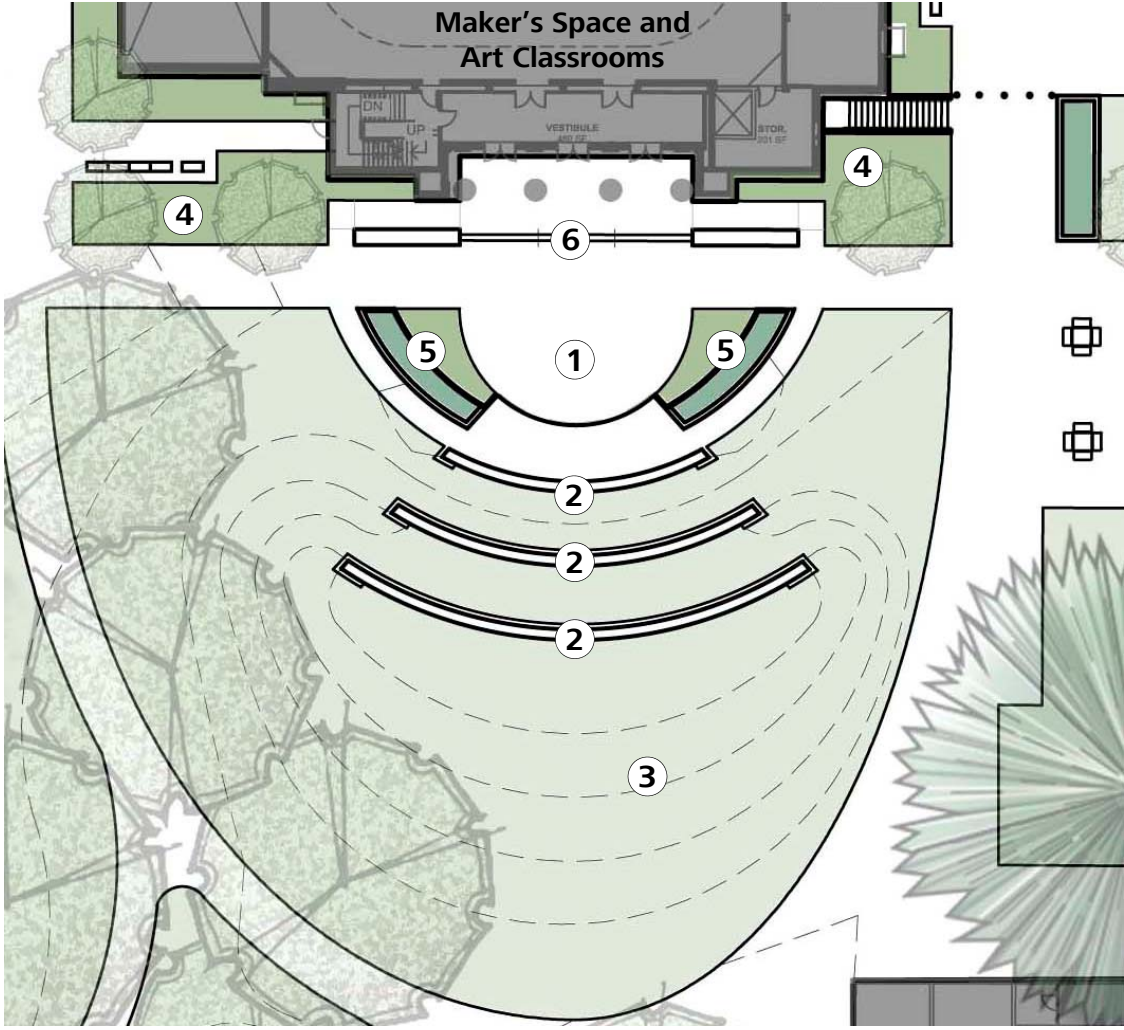


B B'

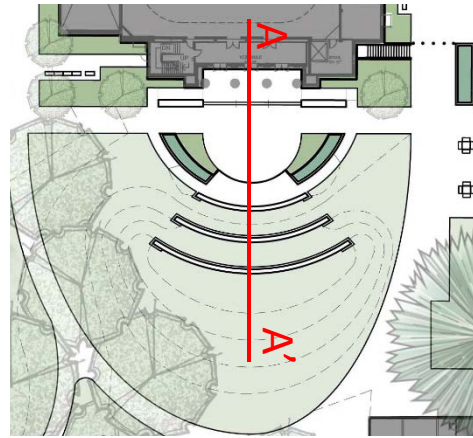
CLASSROOMS
COMMONS
COMMONS

Amphitheater

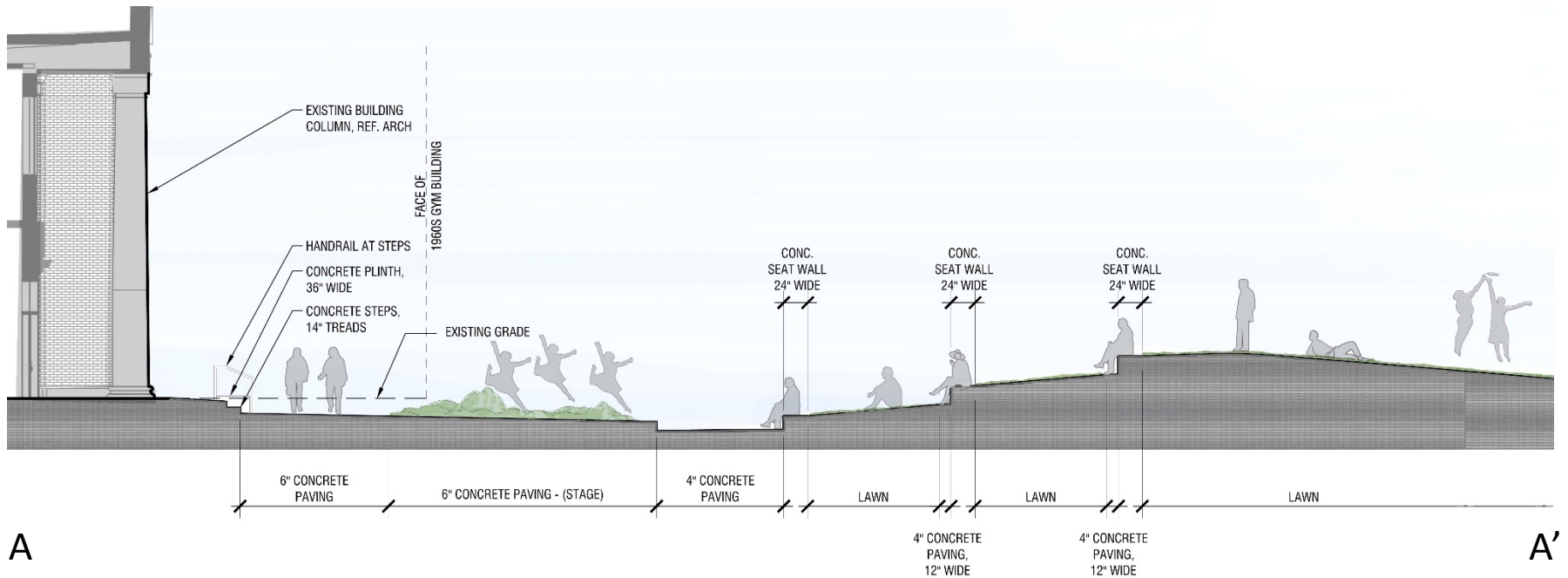
- 1 Stage
- 2 Seat Wall
- 3 Sloped Lawn
- 4 Shrubs
- 5 Shrub Planting, Stormwater Planter, and Sloped Walk
- 6 Ramps, Steps, and Seat Walls



Old Gym Entry Plaza and Amphitheater



Concordia University Amphitheater



Site Development:: Bike Parking

Bike Parking







Bike Parking



Bike Parking



Bike Parking

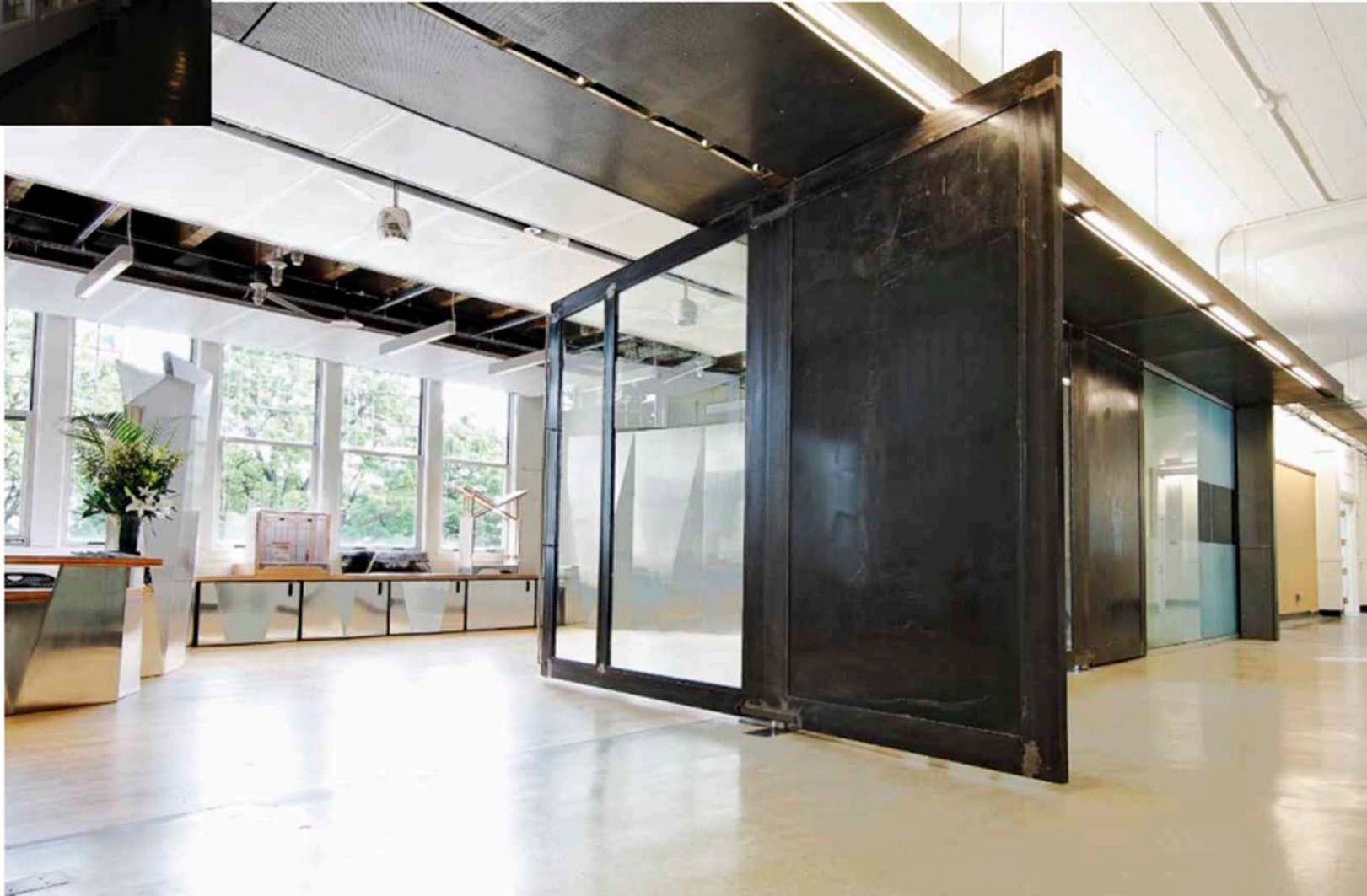


Building Development :: Focus on Interiors





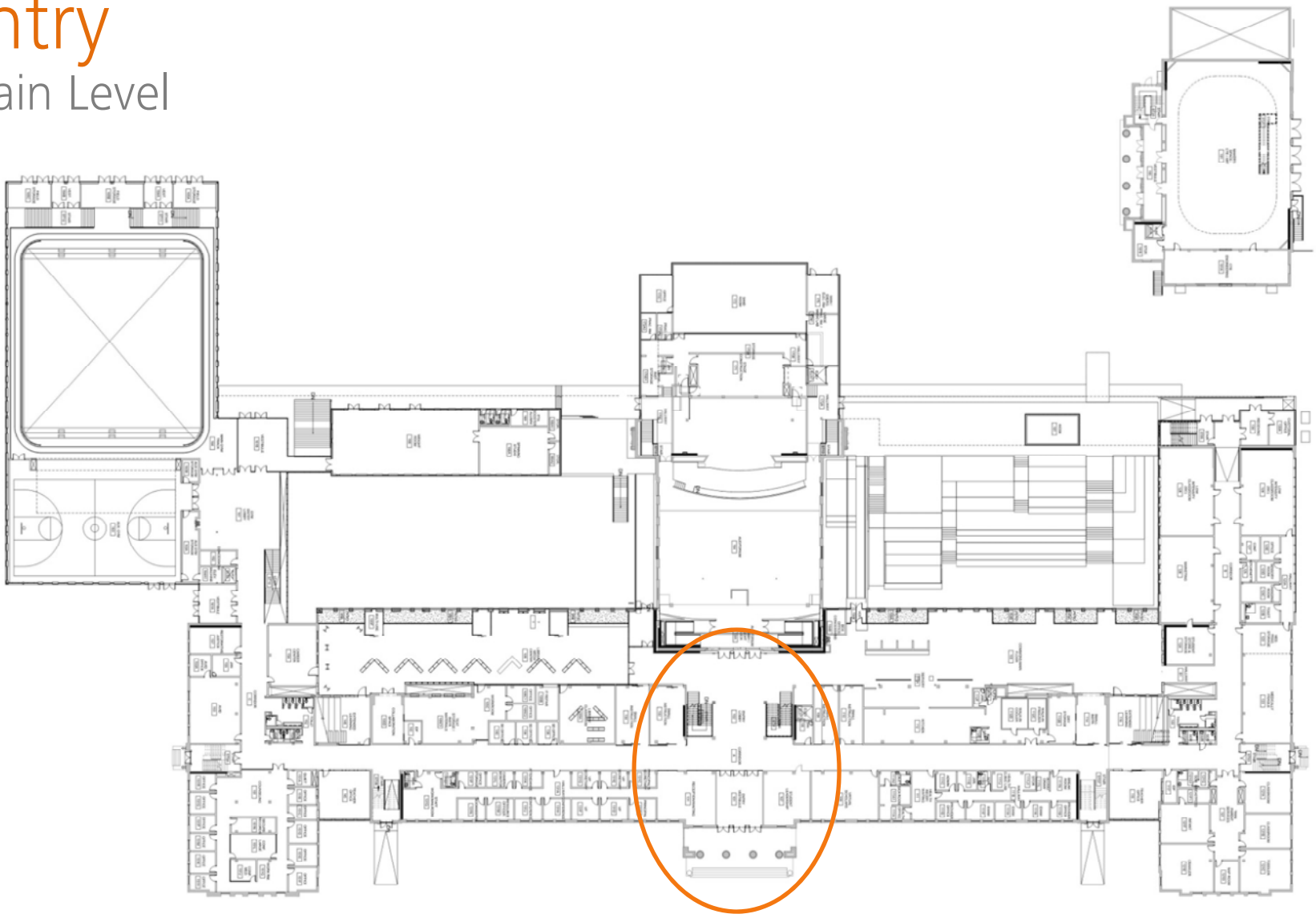
Above: Corridor prior to renovation
Right: Post-renovation





Entry

Main Level



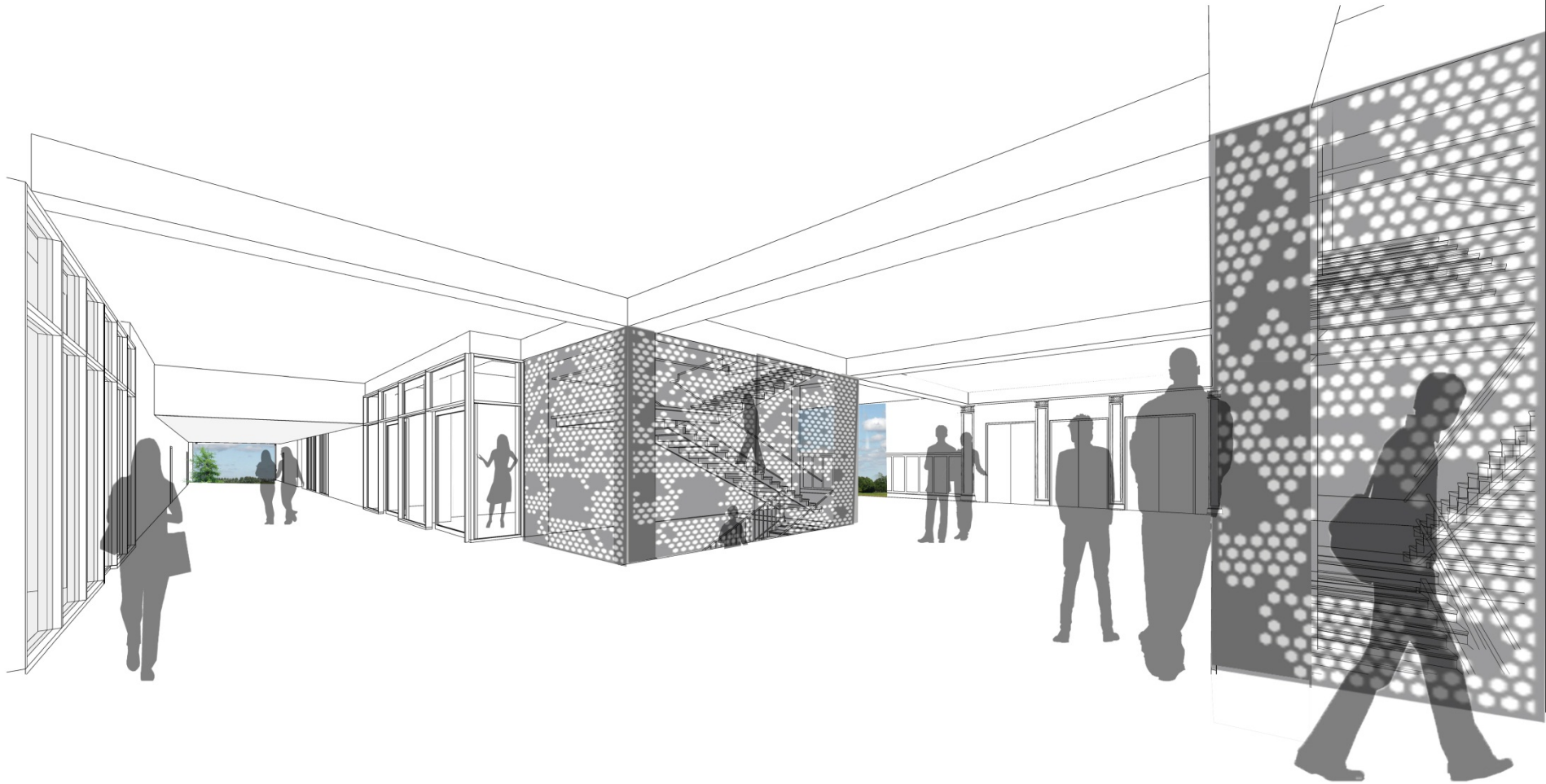
Entry

Main Level



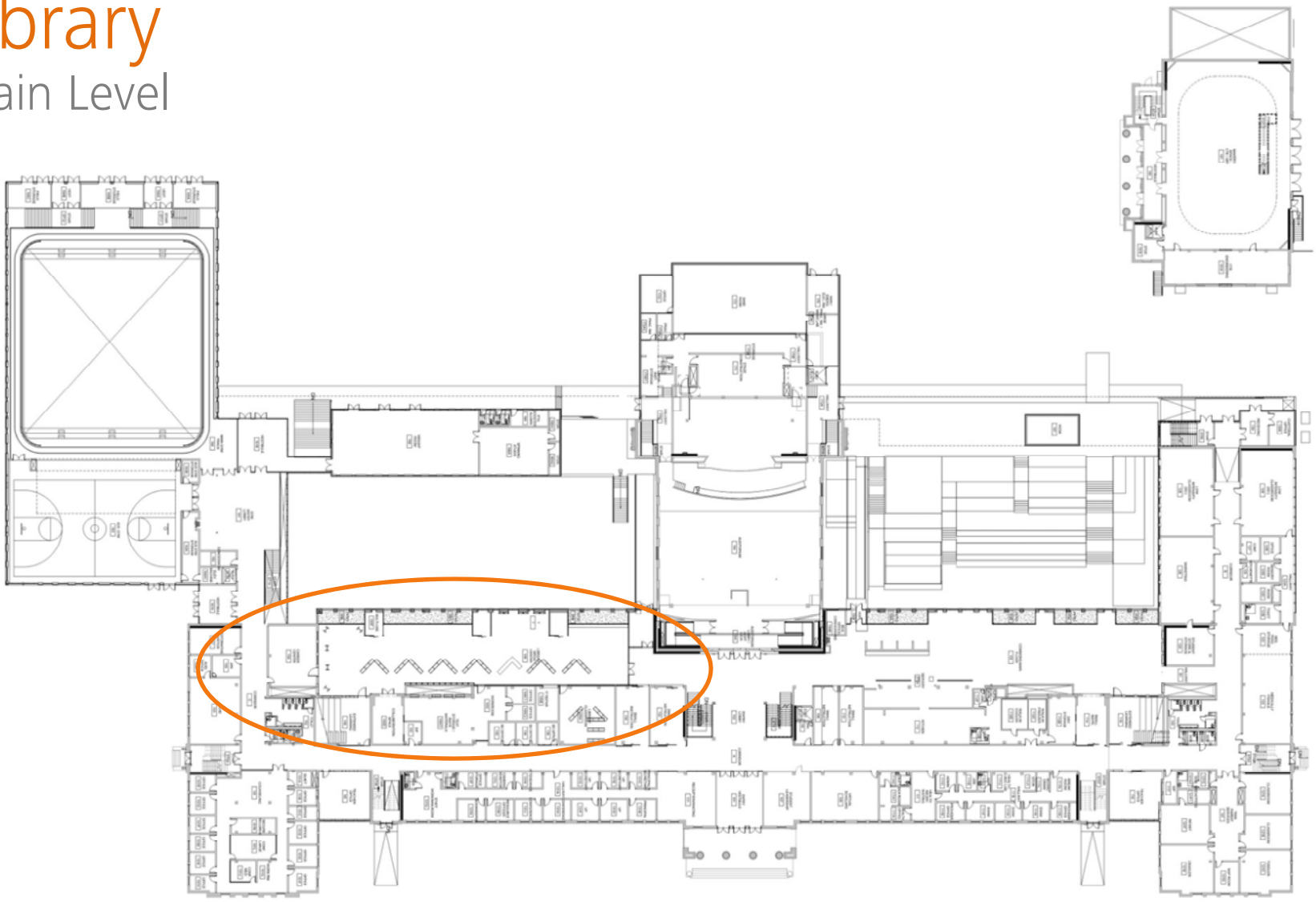
Entry

Main Level



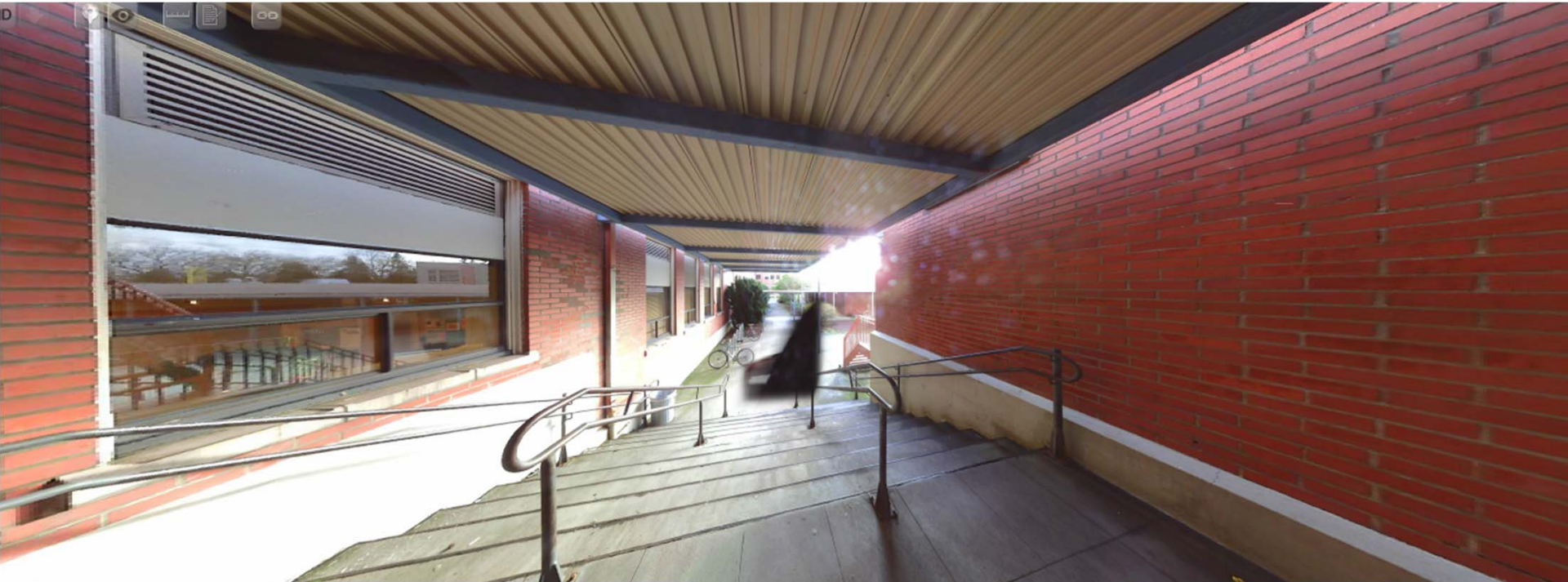
Library

Main Level



Library

Main Level



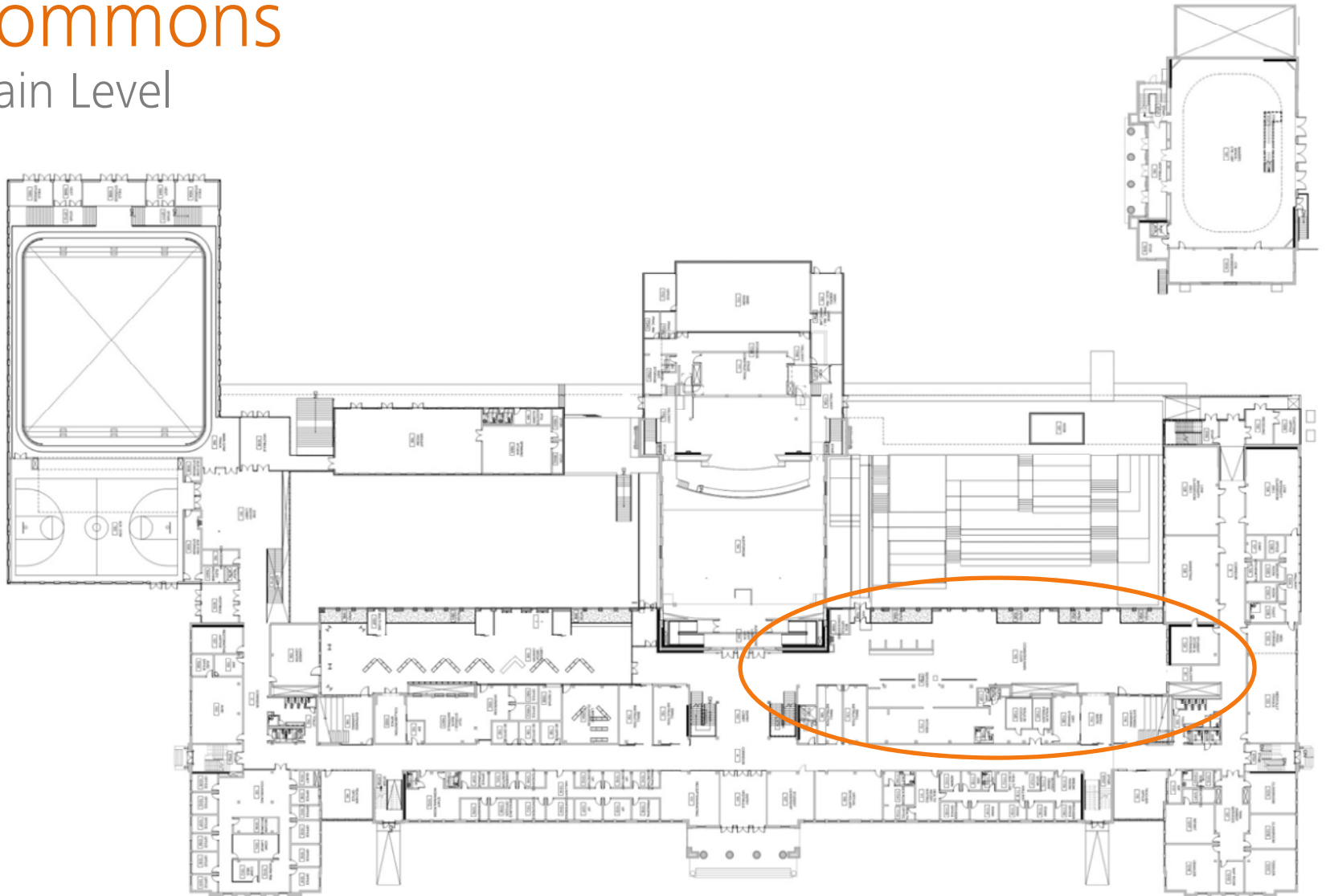
Library

Main Level



Commons

Main Level



Commons

Main Level



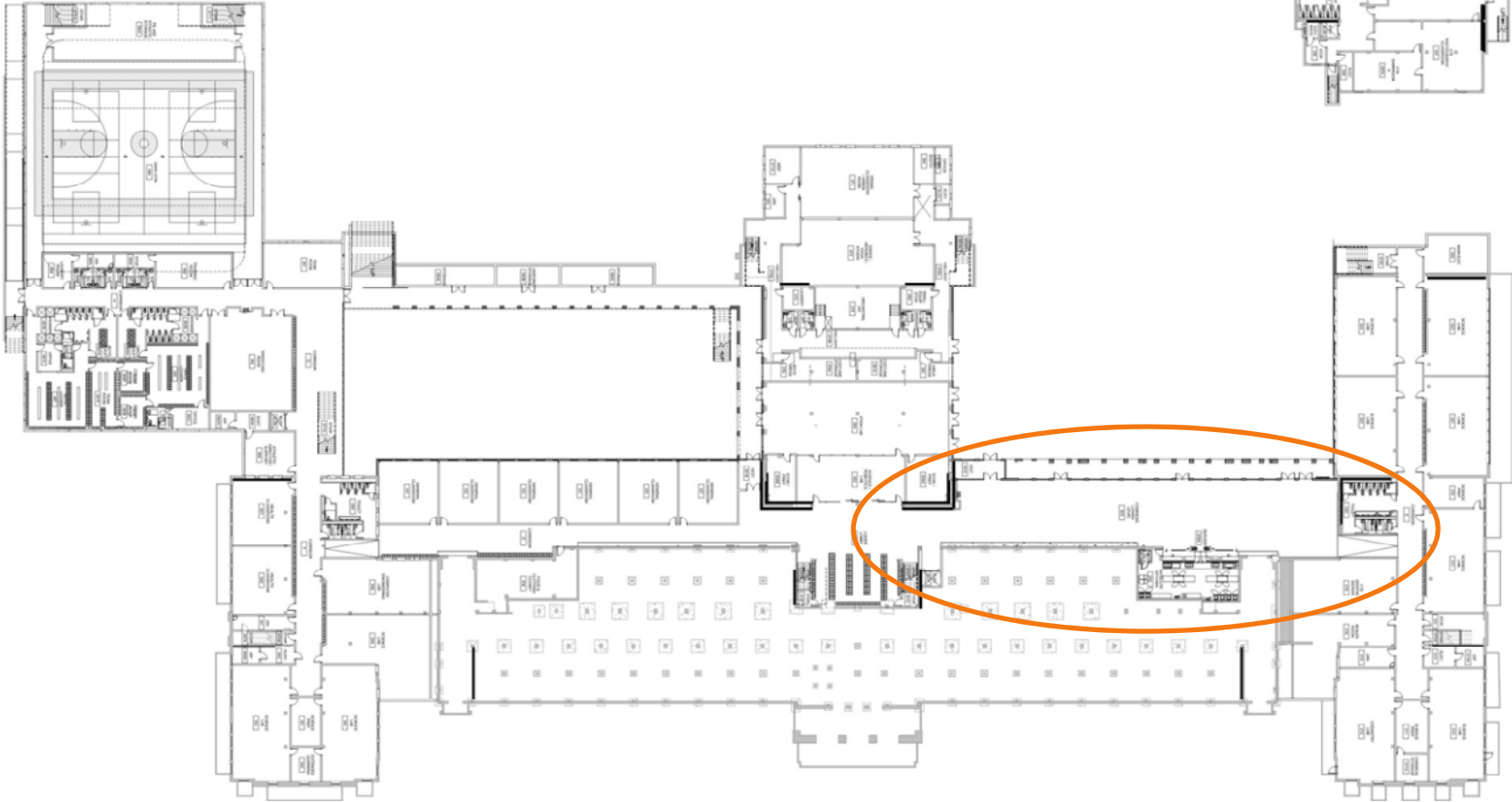
Commons

Main Level



Commons

Lower Level



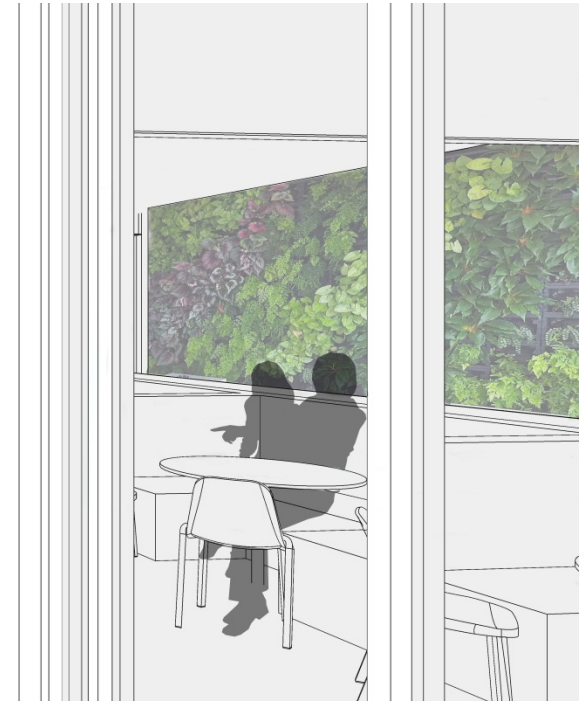
Commons

Lower Level



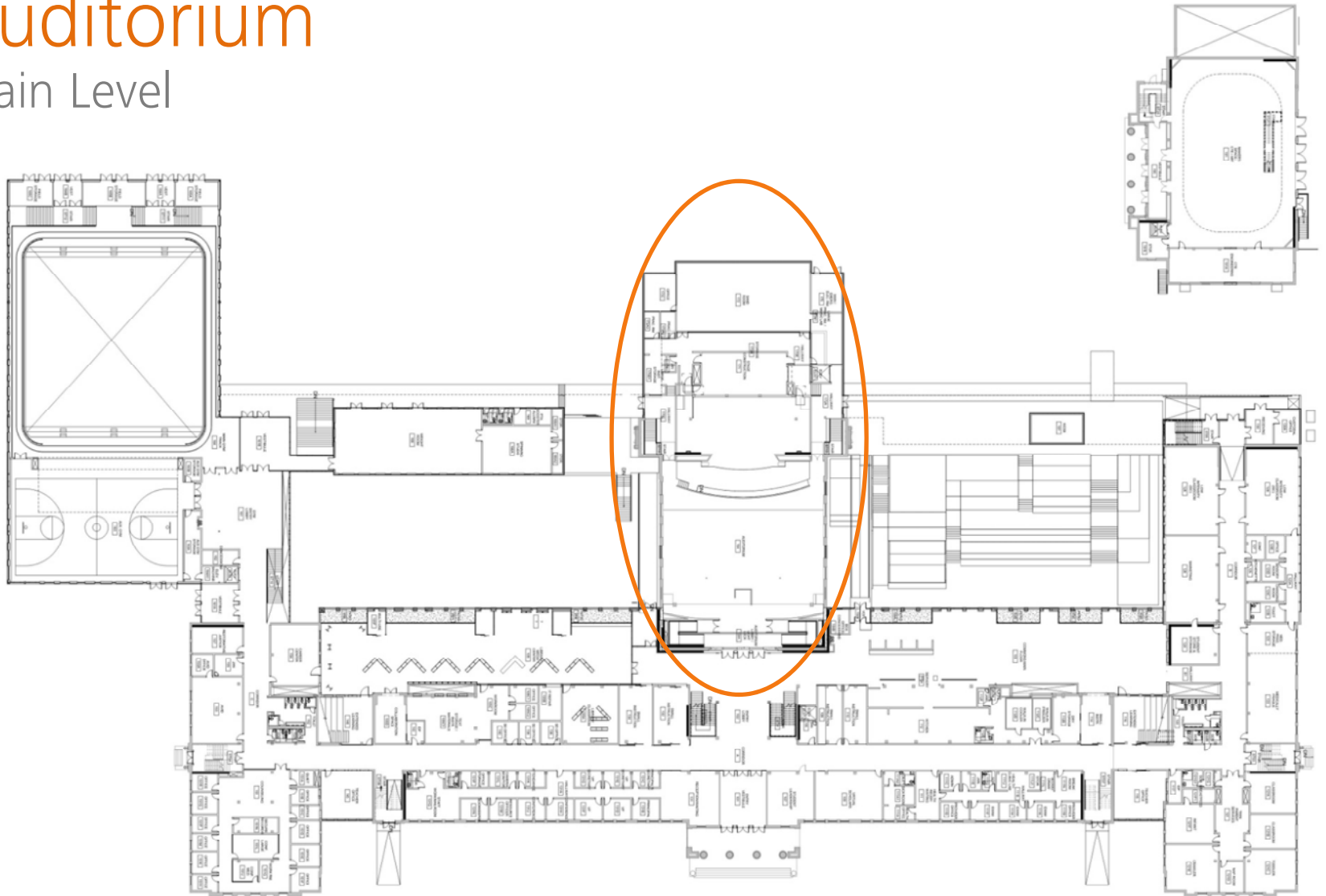
Commons

Lower Level



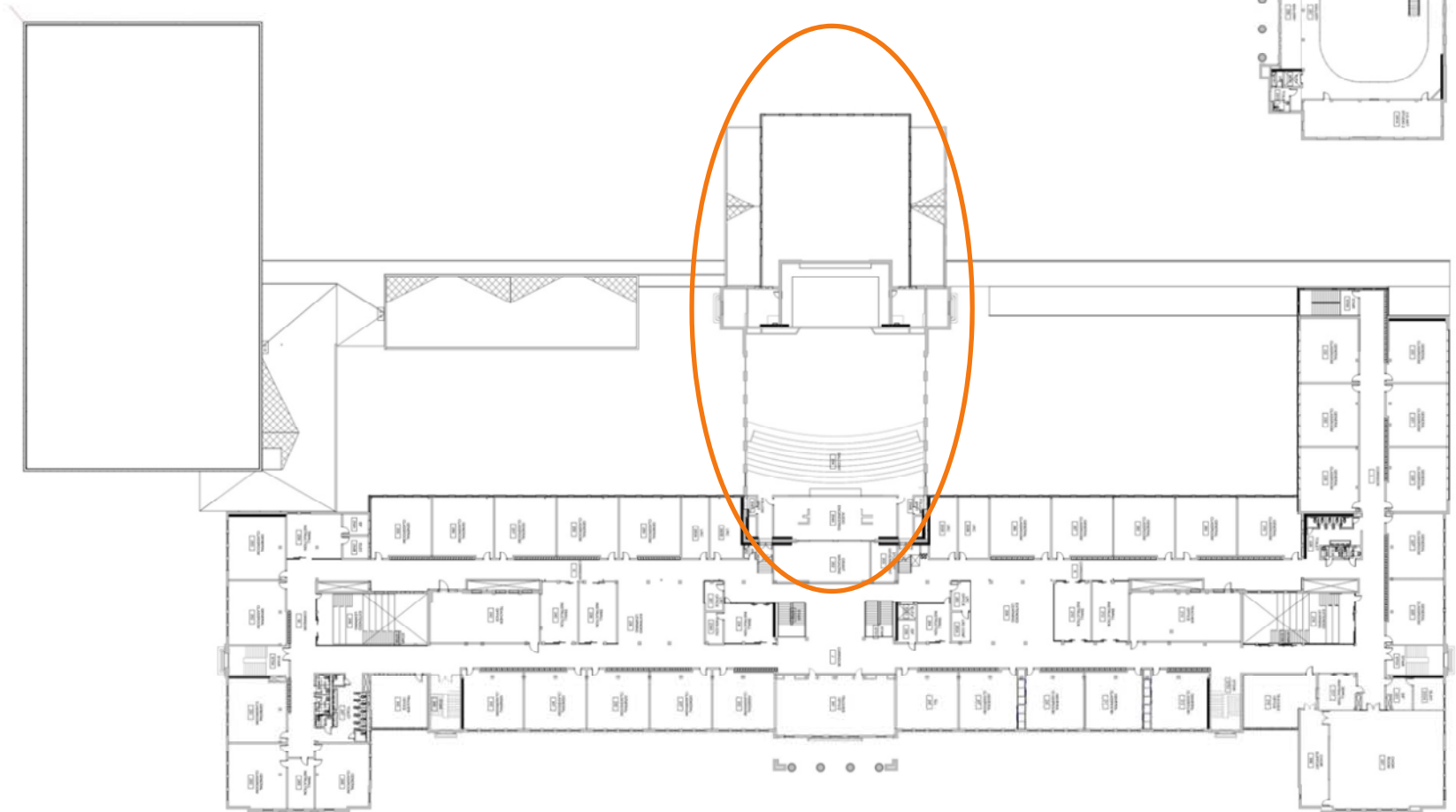
Auditorium

Main Level



Auditorium

Upper Level



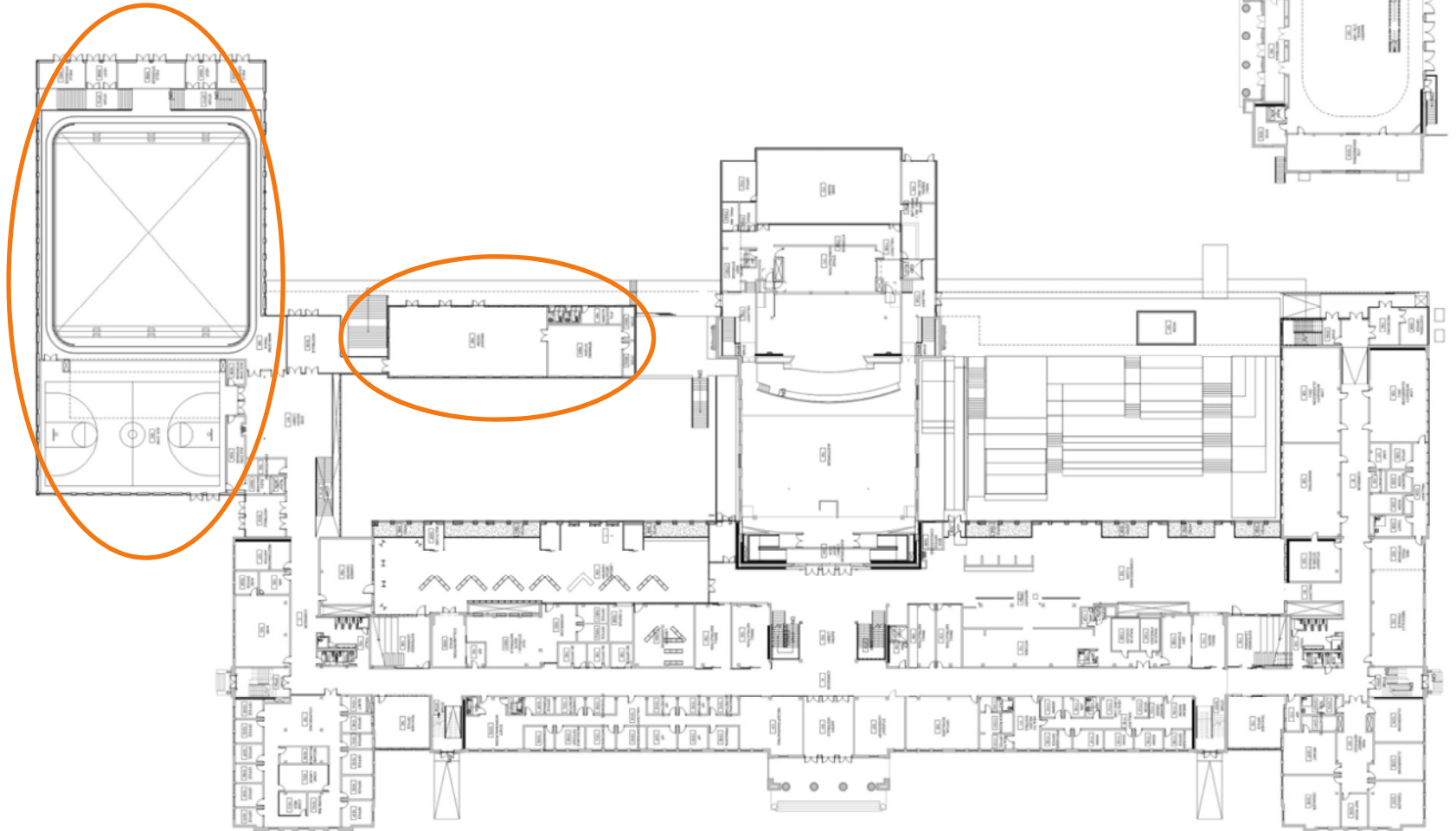
Auditorium

House



Athletics

Main Level



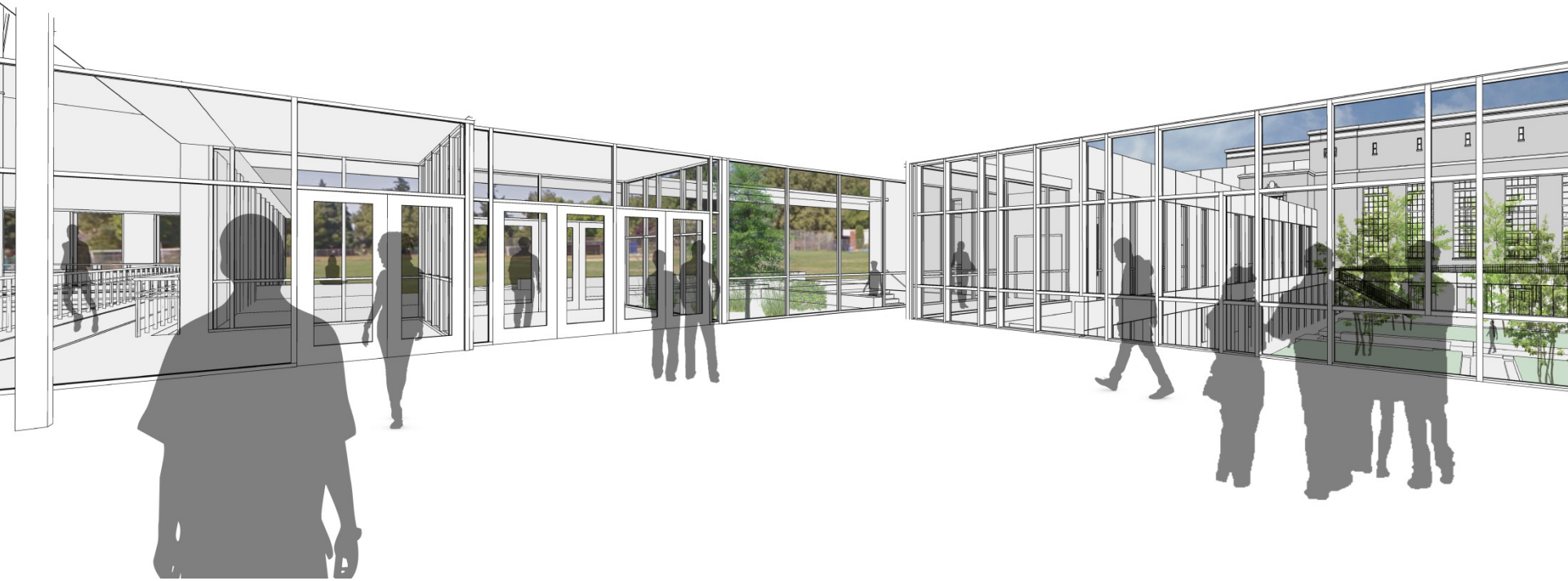
Athletics Lobby

Main Level



Athletics Lobby

Main Level



Athletics Gymnasium

Main Level



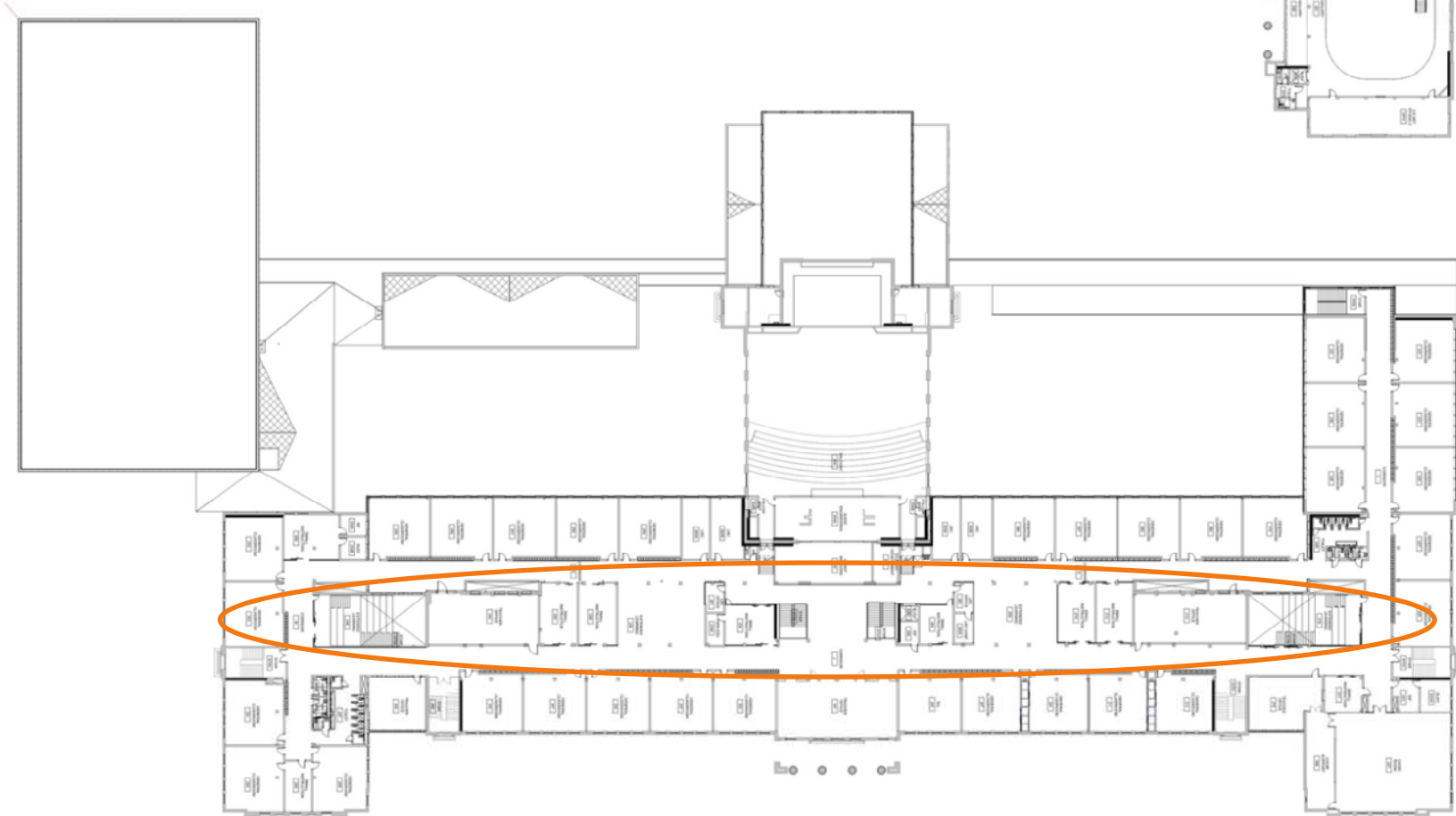
Athletics Gymnasium

Main Level



Learning Edge

Upper Level



Learning Edge

Upper Level



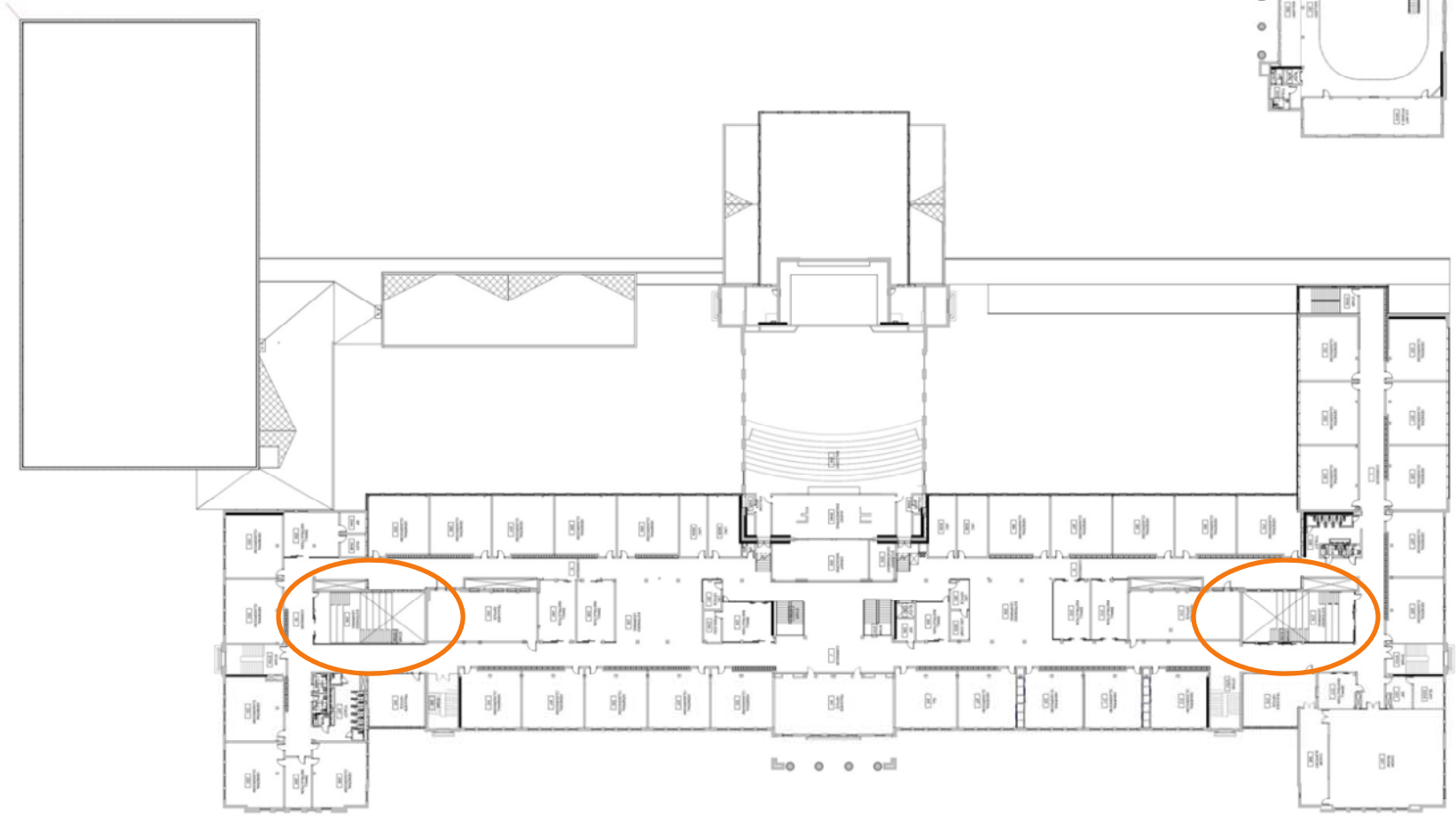
Learning Edge

Upper Level



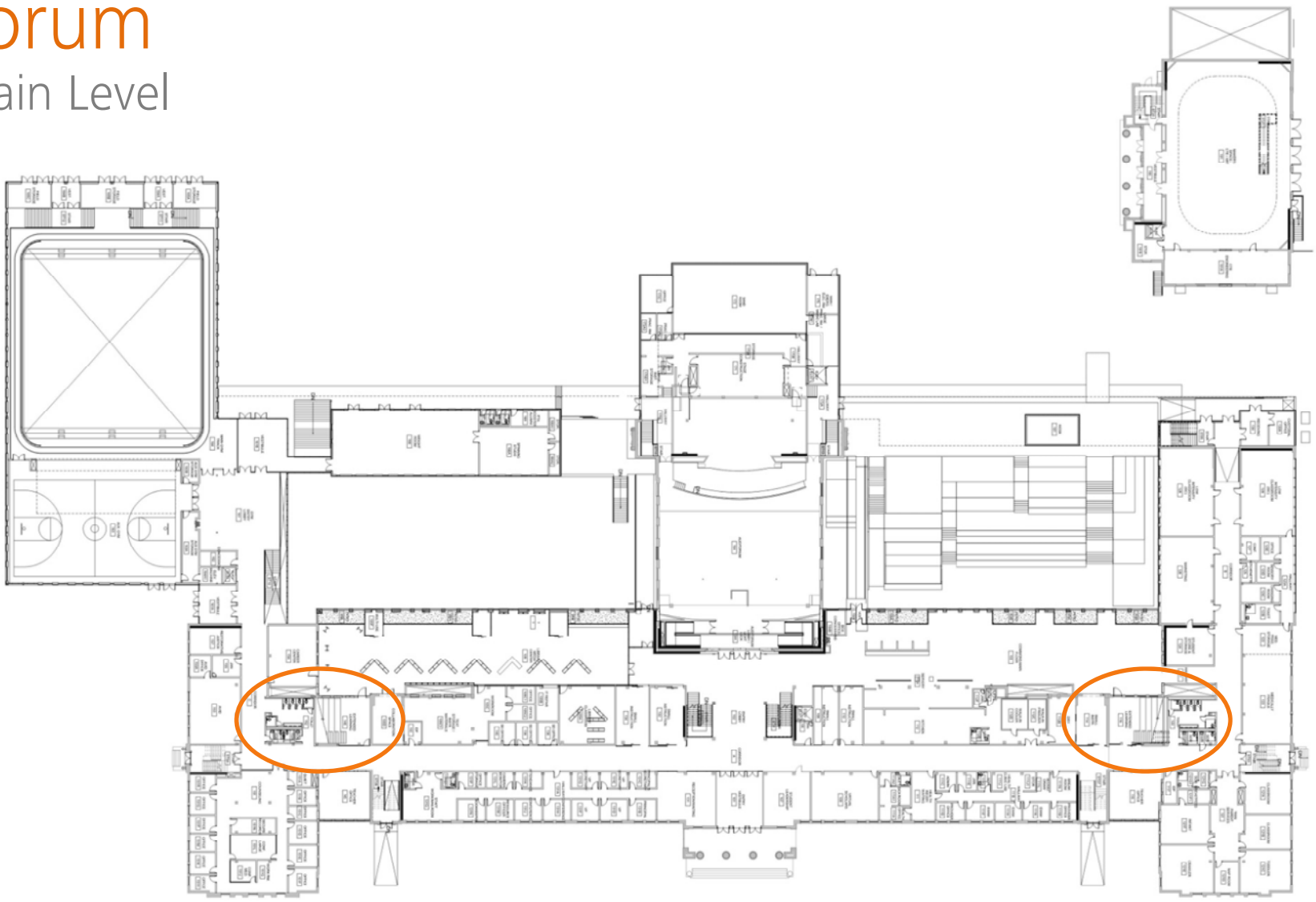
Forum

Upper Level



Forum

Main Level



Forum

Main Level



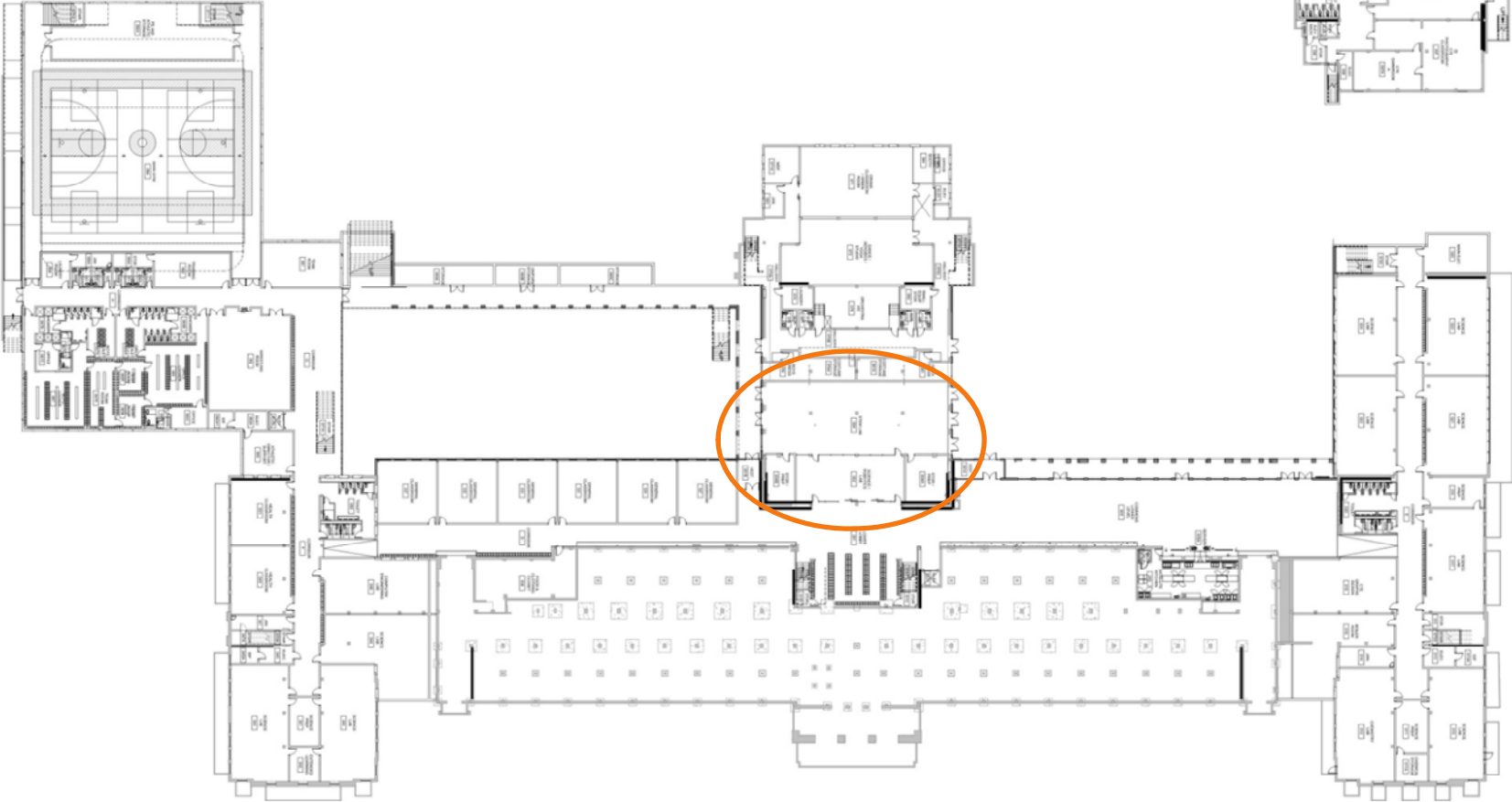
Forum

Main Level



STEM

Lower Level



STEM

Lower Level



STEM

Lower Level



Building Development :: Focus on CTE

CTE: Career Pathways

3-D Design & Applied Arts

AP Studio Art
Ceramics & Sculpture

Multimedia/Theater Arts

Writing for the Arts
From Page to Performance
Children's Theater Touring Co.
Theater Tech

Digital Media

Pop Culture
Video & Community
Printmaking & Print Media
Screen Printing: Print Shop Project
Digital Cinematography

Education

Intro to Education

Audio Engineering

Composition (Guitar)
Music Production
Advanced Audio Engineering:
Speaker Design
Advanced Guitar: Composition
& Recording

Healthcare

Anatomy & Physiology
Biomedical Science

Info Technology

Intro to Computer Programming
JAVA & Android Programming
Android Innovations

Engineering

Architectural Drawing &
Drafting
Geo Tech
Intro to Engineering/Drafting
Engineering Design

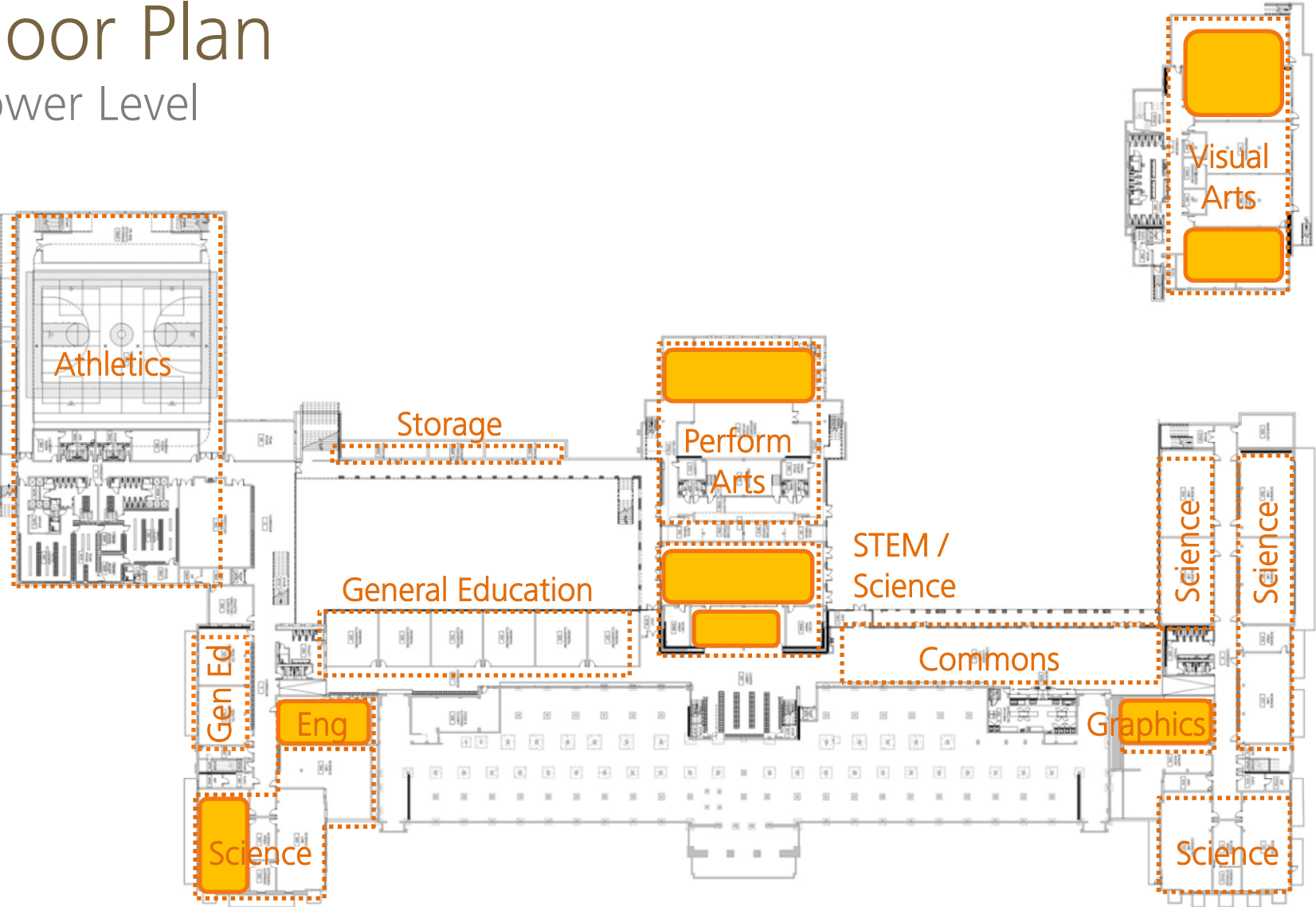


Other CTE Course

Intro to Grant Magazine
PSU Journalism / Grant Magazine
Electrical Circuits/Robotics & Coding
Advanced Robotics
Accounting and Personal Finance
Intro to Business
Graphic Design & Visual Communications
Marketing & Entrepreneurship
Sports & Entertainment Marketing
General Store Internship

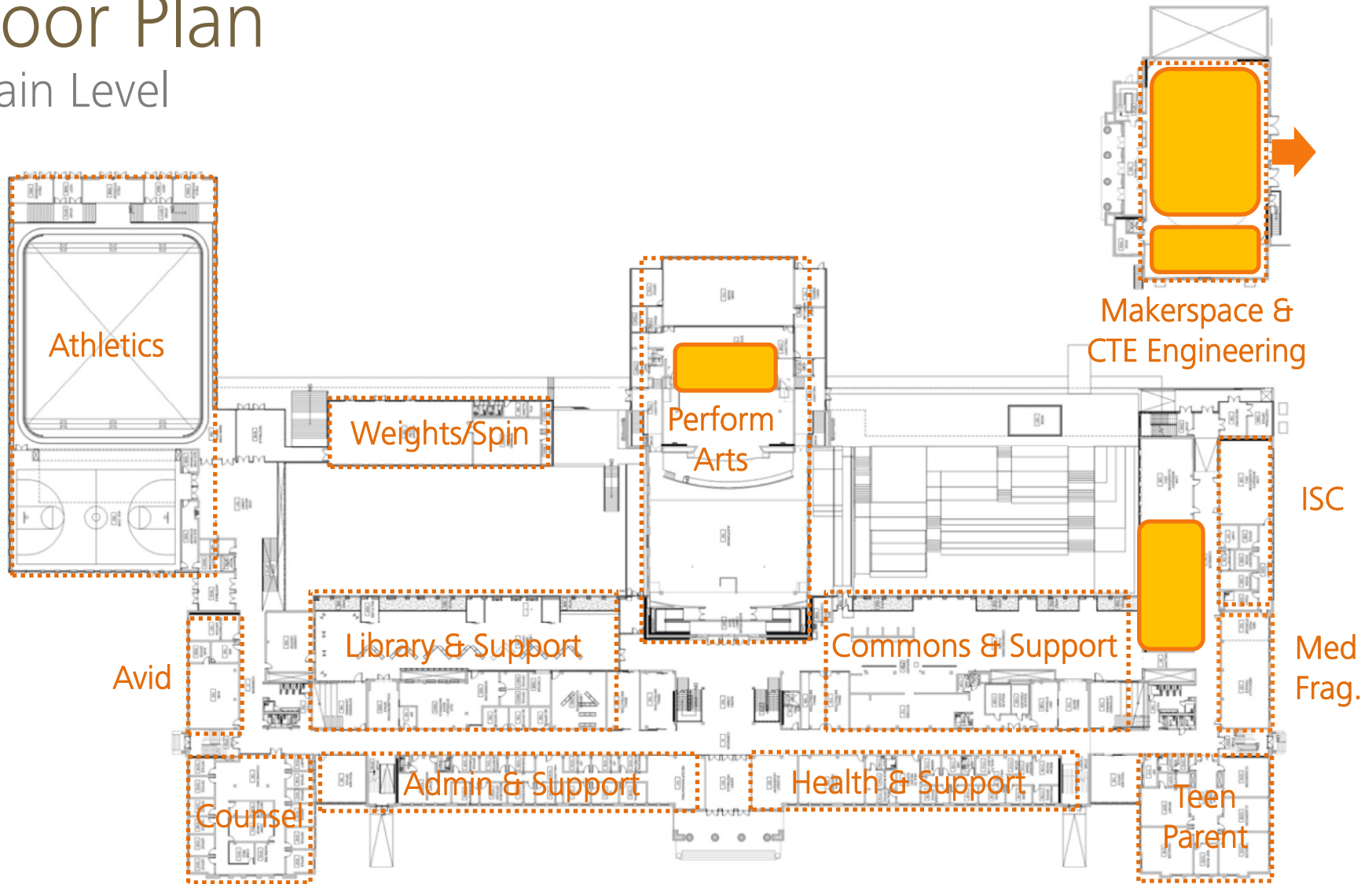
Floor Plan

Lower Level



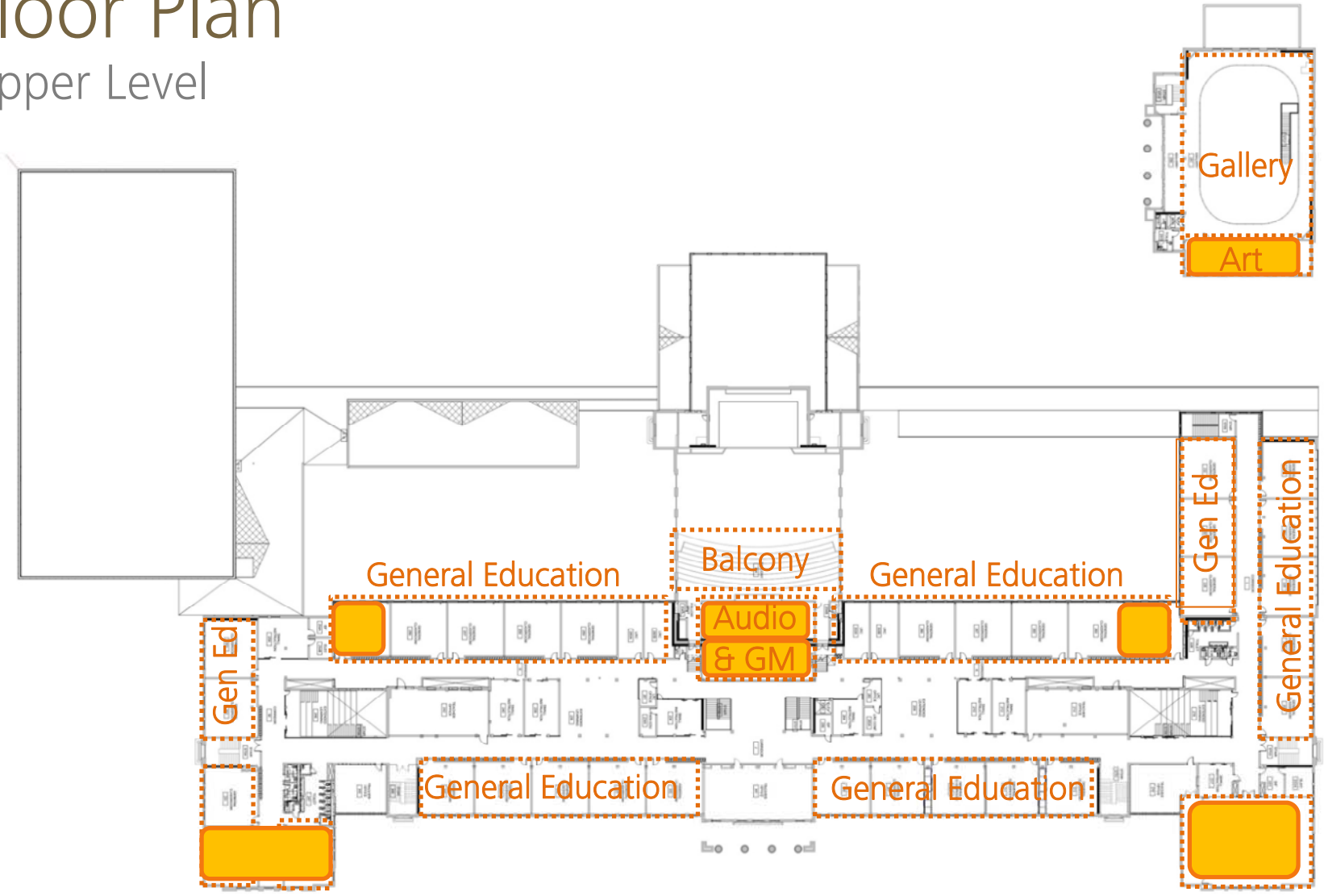
Floor Plan

Main Level



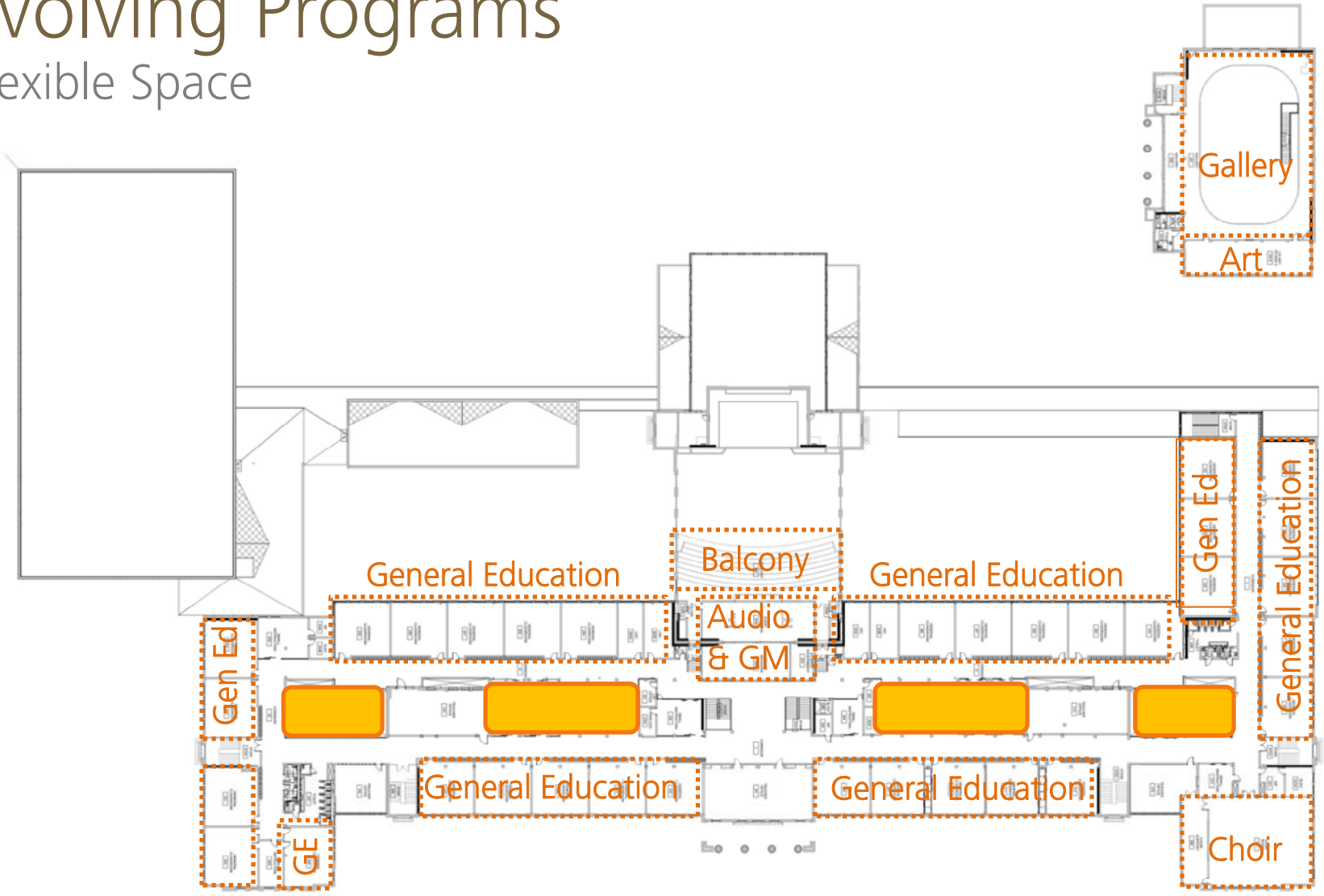
Floor Plan

Upper Level



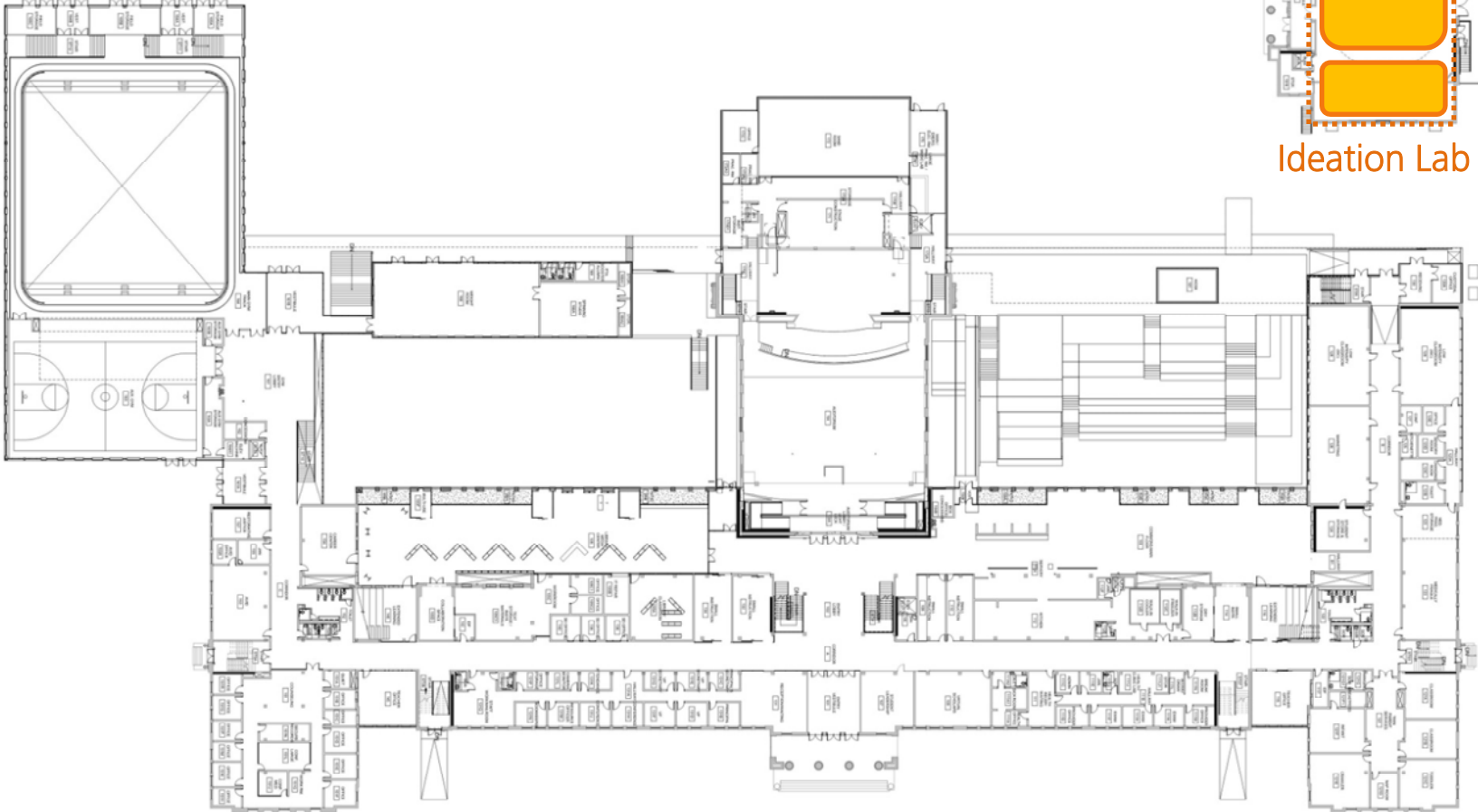
Evolving Programs

Flexible Space



Ideation Lab

Maker's Space / CTE



Ideation Lab

Ideation Lab

Maker's Space / CTE



Ideation Lab

Maker's Space / CTE



Ideation Lab

Maker's Space / CTE



Building Development:: Gender Inclusive Restroom Proposal

Gender Inclusive Restroom Design: National News

The Atlantic

The Power Struggle Over Transgender Students

Who should have the ultimate say over school policies pertaining to trans youth?



Ted S. Warren / AP

ALIA WONG

FEB 25, 2016 | EDUCATION

TEXT SIZE



Last year, states across the country considered 17 bills that would've regulated transgender people's use of sex-segregated spaces such as bathrooms. None of them passed. But the reality is looking a lot different this year: Twenty-nine such bills, many of them school-specific, are making their way through state legislatures so far,



Portland
Community
College

About PCC Academic Programs

All Gender Bathrooms

PCC / Resources / Qrc /

What is an all gender restroom?

An all-gender restroom, sometimes called a gender neutral restroom, is a restroom that anyone of any gender can use. These restrooms can benefit many different people, including parents with differently gendered children, alter-abled people who may require the a

Find a bathroom

- [Text-only list of all gender bathrooms at PCC](#)

[Interactive map of all gender](#)

TIME

LATEST MAGAZINE VIDEOS

The Gender-Neutral Bathroom Revolution Is Growing

U.S. LGBT

The Gender-Neutral Bathroom Revolution Is Growing

Katy Steinmetz @katysteinmetz Jan 11, 2016



Bathrooms often become battlegrounds in fights over civil rights

San Francisco has long been considered one of America's most—if not the most—LGBT friendly cities. Yet in at least one increasingly watched area, the city has fallen behind. On Monday, San Francisco Supervisor David Campos took the first substantive steps toward changing that when he announced plans to introduce a bill that would make many city bathrooms gender-neutral.



Get the speed you need

XFINITY Internet
Get it now at \$29.99 a month / 12 months
with 1-year agreement

Get It Now X

Twitter, Google and the Associated Press Partner on Voter Tracking Tool

New Video Shows Secret Service Agent's Confrontation With TIME Photographer

Apple and FBI Set to Face Off at Congressional Hearing

PHOTO CONTENT FROM NETFLIX
50 Years of Food for Thought

Fut
A nur
new c
do no

Gender Inclusive Restroom Design



Equality



Equity

Gender Inclusive Restroom Design



Gender Inclusive Restroom Design

- Unisex public toilet
- Unisex bathroom
- Gender-neutral restroom
- Gender-inclusive washroom
- Single occupant toilet room
- Etc.

A gender-neutral washroom is one where the signage is visibly identified with open, inclusive language, not just male or female, are **void of gender identity** and have accommodations that are especially sensitive to the needs of a greater range of people. Gender-neutral bathrooms benefit **transgender** populations and other people who exist outside of the gender binary; people with **disabilities**, the **elderly**, and anyone else who may require the assistance of someone of another gender; and parents who may wish **to accompany their children** to the washroom or toilet facility.

Gender Inclusive Restroom Design :: Considerations



**ZERO TOLERANCE
FOR INTOLERANCE**

This is a safe space for people of all identities. Where **love and equality** are supported, and ableism, cissexism, classism, faithism, heterosexism, racism, sexism, and any other -ism will not be tolerated. Thank you for understanding.



Perceptions

Signage Conventions

Safety & Security

Enhanced Levels of Privacy

Hygiene

Acoustics

Plumbing Code Implications

Accessibility (ADA) Code
Implications

Gender Inclusive Restroom Design :: Precedent

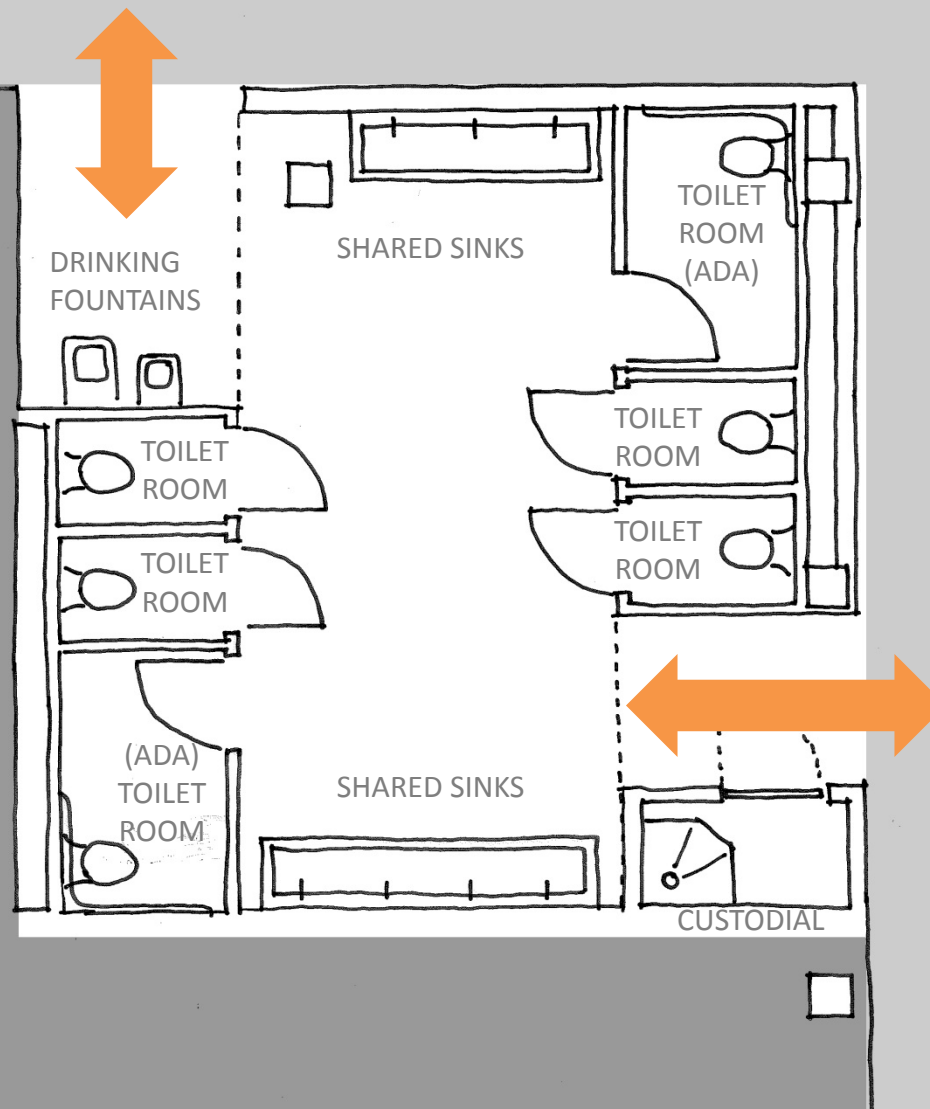


Gender Inclusive Restroom Design :: Precedent



Gender Inclusive Restroom :: Option A

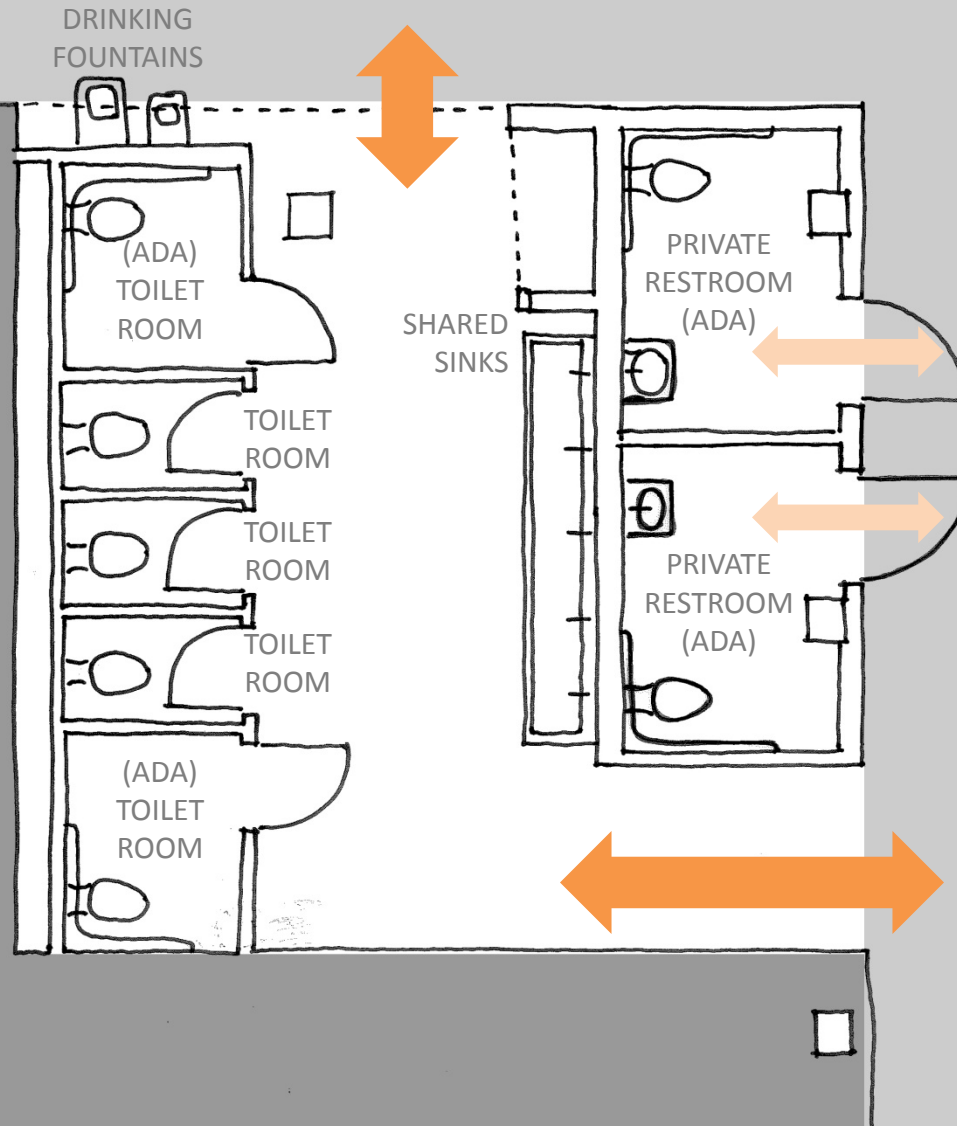
- :: Floor to ceiling walls with either full height doors, or full height partition doors
- :: (6) Fully enclosed toilet rooms; (2 of 6) accessible
- :: Trough sinks with integrated hand dryers
- :: (1) Custodial closet



(6) TOILETS
(6-7) SINKS

Gender Inclusive Restroom :: Option B

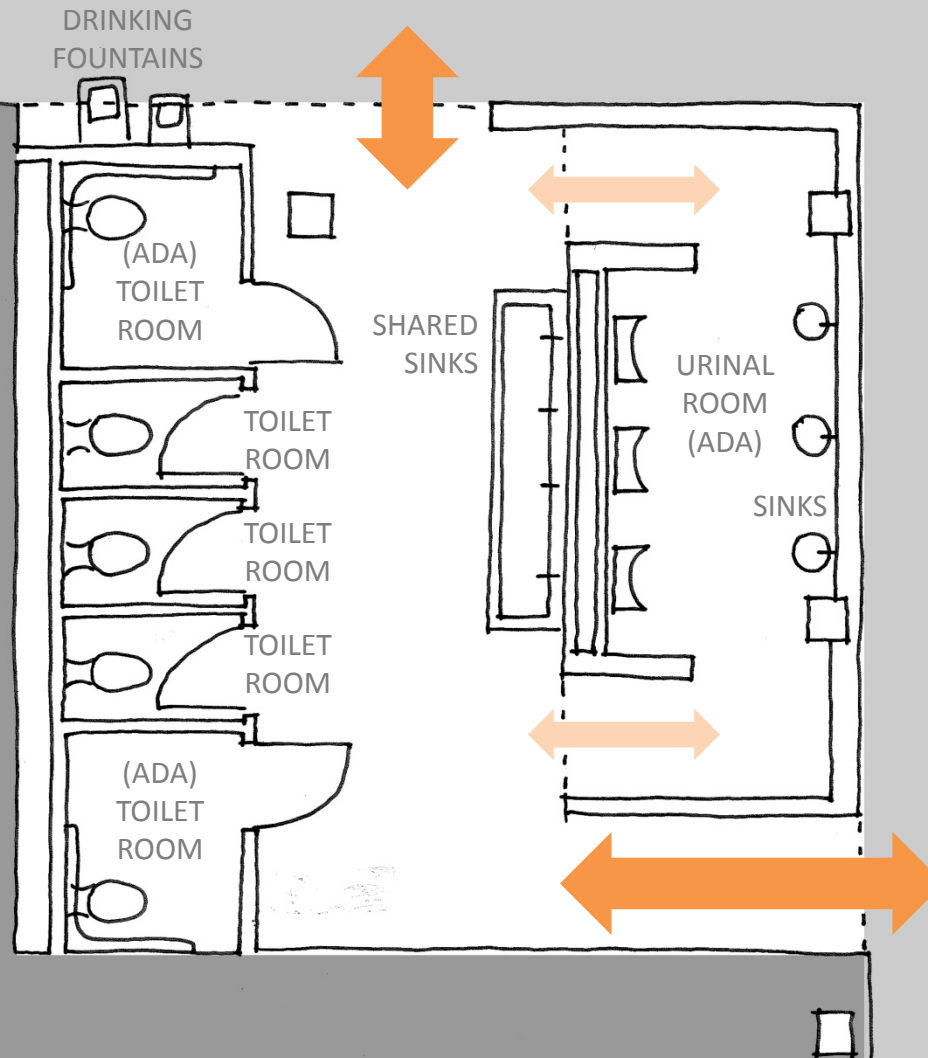
- :: Floor to ceiling walls with either full height doors, or full height partition doors
- :: (5) Fully enclosed toilet rooms; (2 of 5) accessible
- :: (2) Private accessible restrooms; corridor access only
- :: Trough sinks with integrated hand dryers



(7) TOILETS
(7) SINKS

Gender Inclusive Restroom :: Option C

- :: Floor to ceiling walls with either full height doors, or full height partition doors
- :: (5) Fully enclosed toilet rooms; (2 of 5) accessible
- :: Fully concealed urinal room; (3) accessible urinals and (3) sinks
- :: Trough sinks with integrated hand dryers



(5) TOILETS & (3) URINALS
(7) SINKS

Design Advisory Group Process :: Moving Forward

Group Photo ::

Smile 😊

Public Comment

