

CONCEPTUAL MASTER PLANNING

FIRST STEP IN PLANNING MODERNIZED HIGH SCHOOLS

Determine each school's overall program needs, site layout, and estimated costs for modernization and new construction options

This information will help PPS in the planning of future capital improvement bonds

PPS Board currently in the process of planning for the next bond

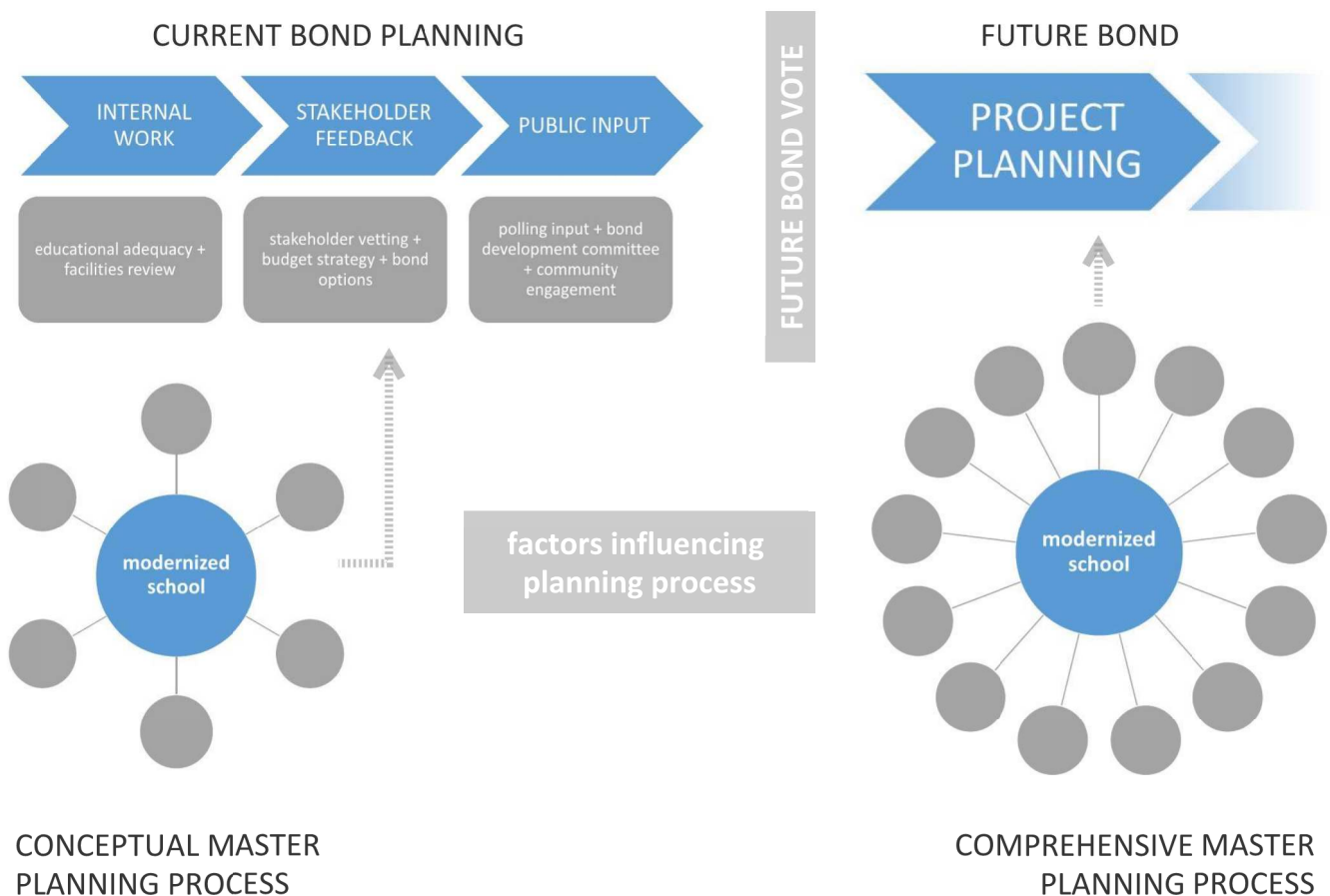
Once a school is part of a bond, PPS will move forward with comprehensive master planning process to provide timely and relevant guidance for the design

CONCEPTUAL MASTER PLANNING COMMITTEE (CMPC)

The CMPC consists of parents, teachers, students, and community stakeholders who work together to help provide feedback for the development of conceptual master plans

CMPC members synthesize community-wide input and share the evolving details of the project to others in the community

Their input is critical in creating a design that the entire community can be proud of



CMPC 1 - VISION & GOALS

PPS VISION & GOALS

LESSONS LEARNED FROM 2012 & 2017

DISTRICT VISION / CORE VALUES

EDUCATION SPECIFICATIONS

DISTRICT FACILITY GOALS

- Equity
- Universal Access
- Safety
- Resilience
- Sustainability
- Energy Efficiency

DISTRICT VISION

A graduate of Portland Public Schools will be a compassionate critical thinker, able to collaborate and solve problems, and be prepared to lead a more socially just world.

DISTRICT CORE VALUES

- Students at the Center
- Racial Equity and Social Justice
- Honesty and Integrity
- Excellence
- Respect
- Relationships
- Creativity and Innovation
- Partnerships and Collaboration
- Grounded in the Spirit of Portland
- Joyful Learning and Leadership

The New Wilson will...

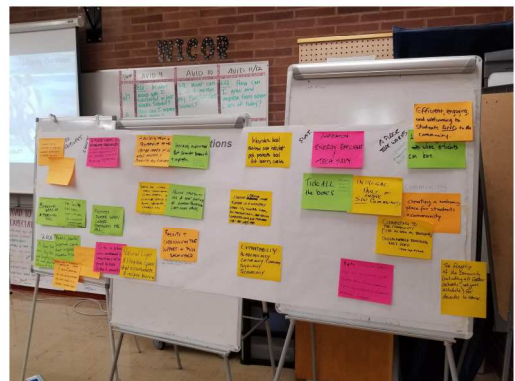
... be a place of pride for the students, staff, and community where everyone feels positively connected to and influenced by the vibrant life of the school and the community it serves.

... be a place that encourages the highest levels of achievement, fosters a love of learning, inspires creativity, and promotes environmental stewardship.

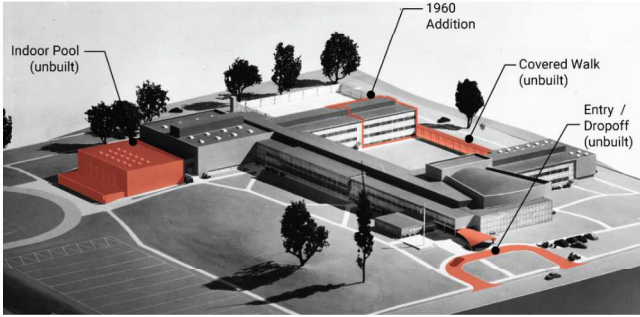
... be a place where all are welcome in a school that provides for the social, emotional, and physical wellness of the people it serves in safe and secure environment.

... meet student needs through equitable consideration of a diverse selection of student pathways with a focus on elevating educational outcomes and increasing student performance.

... meet future student needs by planning for growth, responding to future program needs, and adapting to a world not yet realized.



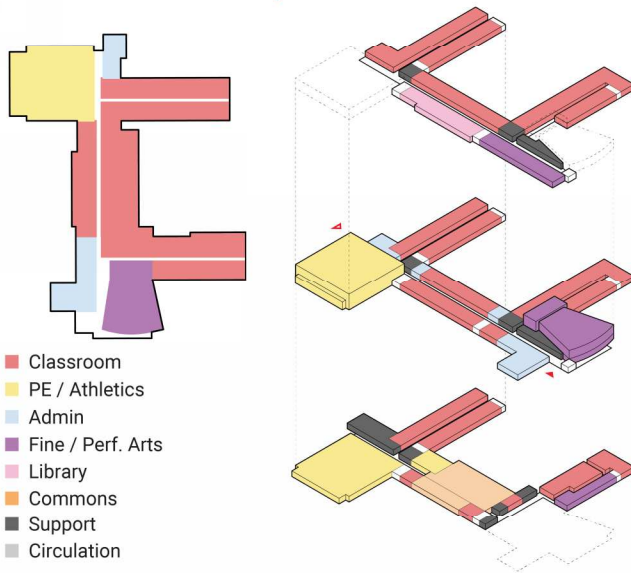
CMPC 2 - PROGRAM & ANALYSIS



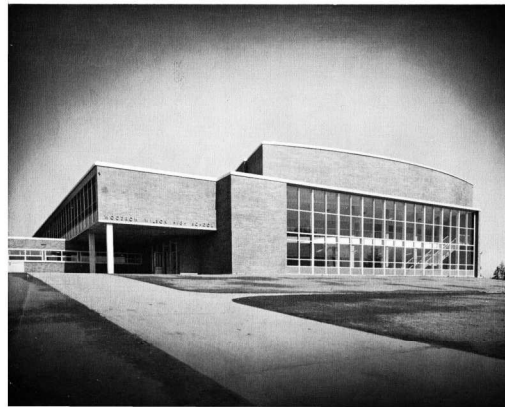
Wilson HS 1954



Wilson HS Today



DEDICATION PROGRAM
Woodrow Wilson High School
Portland, Oregon



Wednesday,
Nov. 7
1956

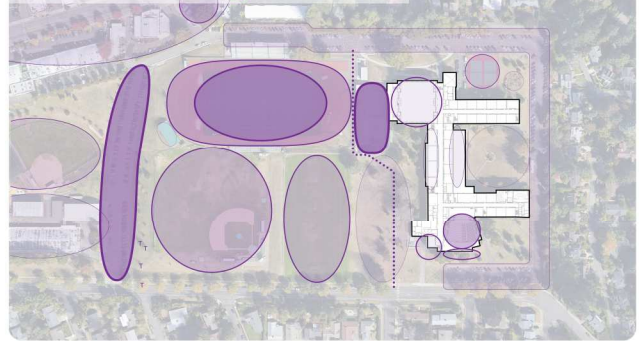
PPS Comprehensive HS Educational Specifications compared to Wilson HS

Program	Ed Spec	WHS	Difference
Gen Ed Classrooms	53,180	41,335	11,845 ↓
Science Labs	17,480	13,300	4,180 ↓
Career Prep / CTE	6,000	11,412	5,412 ↑
Fine & Performing Arts	21,150	32,968	11,818 ↑
Athletics	35,580	32,554	3,026 ↓
Education Support	67,400	45,774	21,626 ↓
Community Partners	1,200	78	1,122 ↓
Wrap-Around Service Providers	4,700	0	4,700 ↓
Sub-Total	207,890	177,447	30,443 ↓
Grossing Factor	74,408 35%	83,453 47%	
TOTAL	281,408	260,900	20,508 ↓

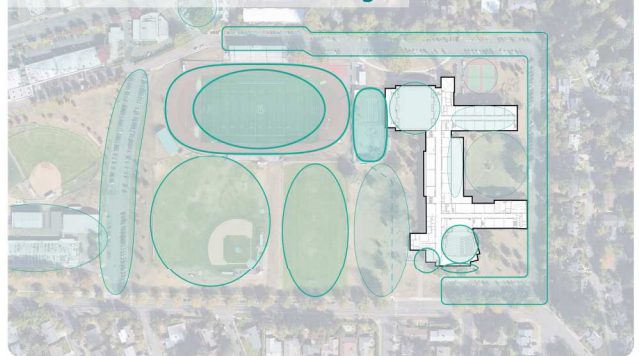
CMPC 3 - CONCEPT DEVELOPMENT



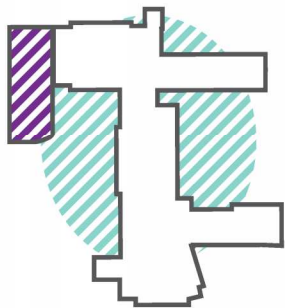
Community Value



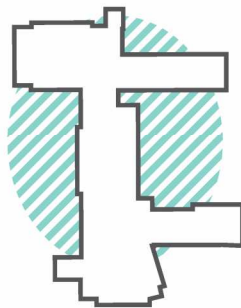
Personal Memory



Favorite Places



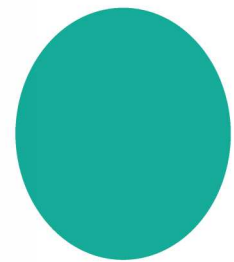
Remodel / Addition
keep Pool



Remodel / Addition
with no Pool



New Building
keep Pool



New Building
with no Pool

