

# CONCEPTUAL MASTER PLANNING

## FIRST STEP IN PLANNING MODERNIZED HIGH SCHOOLS

Determine each school's overall program needs, site layout, and estimated costs for modernization and new construction options

This information will help PPS in the planning of future capital improvement bonds

PPS Board currently in the process of planning for the next bond

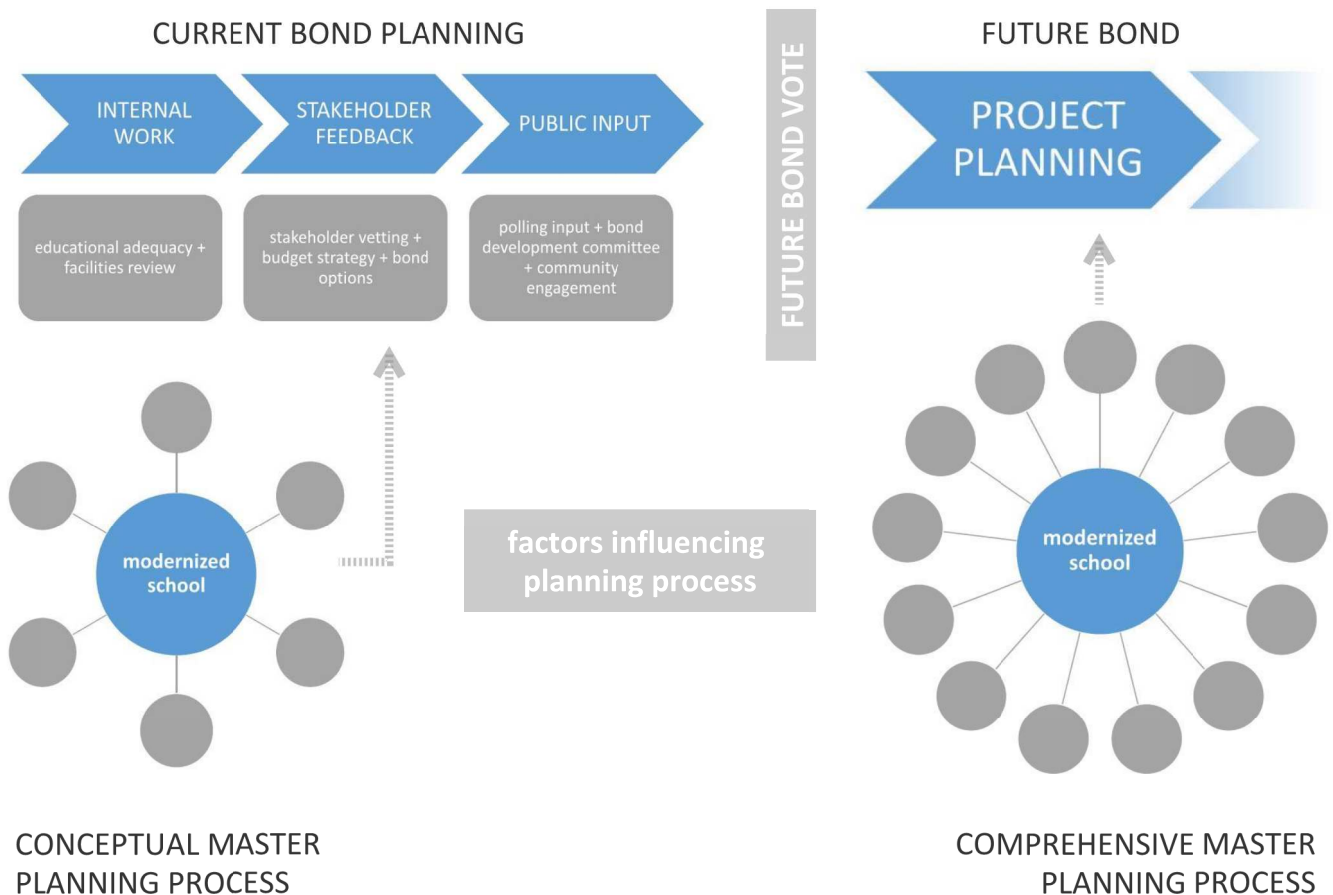
Once a school is part of a bond, PPS will move forward with comprehensive master planning process to provide timely and relevant guidance for the design

## CONCEPTUAL MASTER PLANNING COMMITTEE (CMPC)

The CMPC consists of parents, teachers, students, and community stakeholders who work together to help provide feedback for the development of conceptual master plans

CMPC members synthesize community-wide input and share the evolving details of the project to others in the community

Their input is critical in creating a design that the entire community can be proud of



# CMPC 1 - VISION & GOALS

## PPS VISION & GOALS

LESSONS LEARNED FROM 2012 & 2017

DISTRICT VISION / CORE VALUES

EDUCATION SPECIFICATIONS

DISTRICT FACILITY GOALS

Equity  
Universal Access  
Safety  
Resilience  
Sustainability  
Energy Efficiency

### **DISTRICT VISION**

A graduate of Portland Public Schools will be a compassionate critical thinker, able to collaborate and solve problems, and be prepared to lead a more socially just world.

### **DISTRICT CORE VALUES**

Students at the Center  
Racial Equity and Social Justice  
Honesty and Integrity  
Excellence  
Respect  
Relationships  
Creativity and Innovation  
Partnerships and Collaboration  
Grounded in the Spirit of Portland  
Joyful Learning and Leadership

Offer access to the community and be a hub for its community

Honor Jefferson's history as Portland's black high school and celebrate its future diversity

Create a flexible and adaptable design

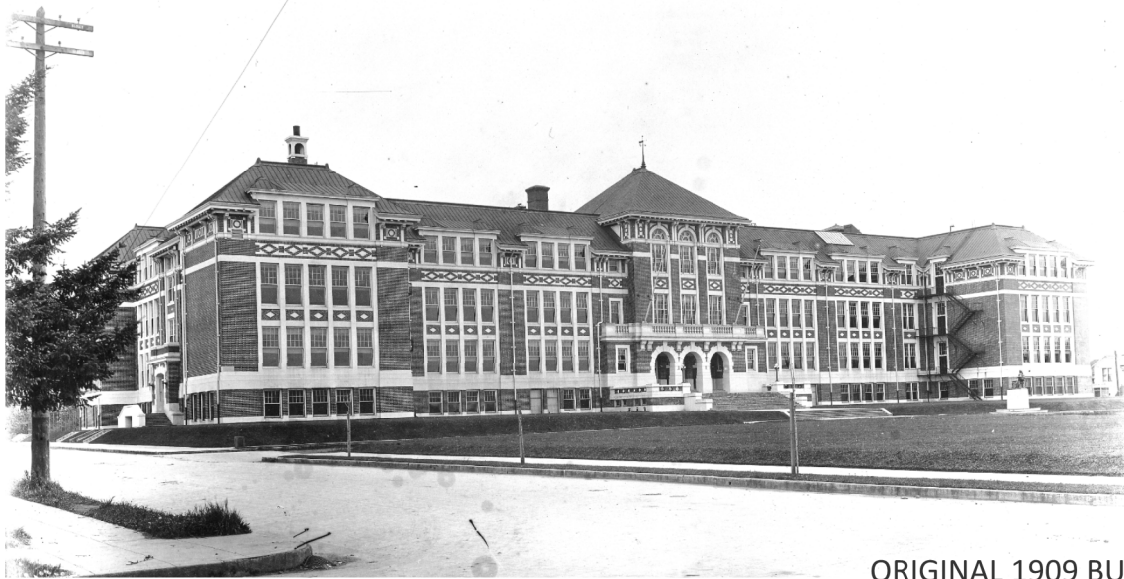
Provide welcoming, safe, resilient and accessible facilities

Offer a rich variety of educational opportunities and maintain strong partner programs

Outreach and engagement are essential

VISION AND GOALS FOR REIMAGINED SCHOOL

# CMPC 2 - PROGRAM & ANALYSIS



ORIGINAL 1909 BUILDING

## PPS Comprehensive High School Area Program

## JHS Conceptual Master Plan Program

AREA SUMMARY	Teaching Stations Quantity	Area Total (SF)
General Education (Gen-Ed) Classrooms <sup>1</sup>	37	47,040
Science Labs	11	17,480
Fine & Performing Arts (Drama, Theater) <sup>2,3</sup>	8	44,070
Career Preparation/CTE	3	8,300
Athletics (includes area for P.E. instruction)	3	35,580
Education Support	2	60,920
<b>Sub-Total Recommended Teaching Stations</b>	<b>64</b>	<b>213,390</b>
Community Partners <sup>4</sup>		6,720
Wrap-Around Service Providers		4,700
<b>Sub-Total</b>		<b>11,420</b>
<b>SUB-TOTAL COMPREHENSIVE HIGH SCHOOL REQUIRED AREA</b>		<b>224,810</b>
<b>Net to Gross Ratio <sup>5</sup></b>		<b>105,400</b>
<b>TOTAL COMPREHENSIVE HIGH SCHOOL AREA</b>		<b>330,210</b>

Notes:

<sup>1</sup> 920 SF Classroom module

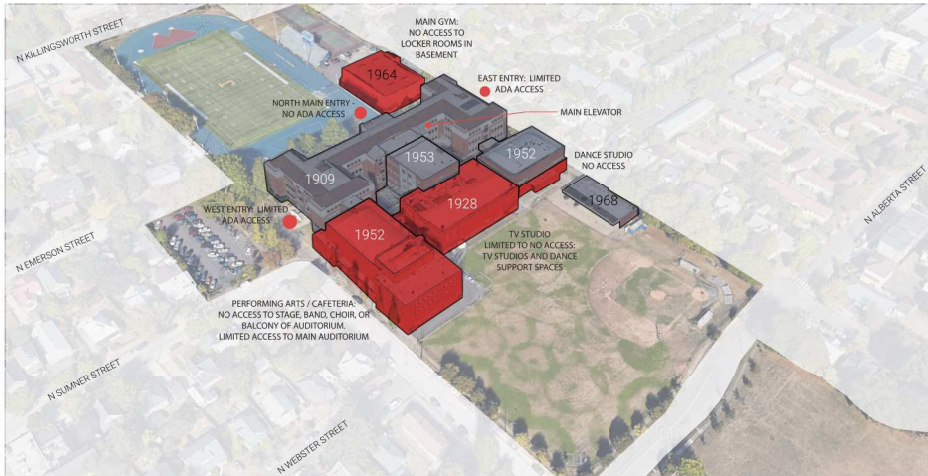
<sup>2</sup> 4 dedicated Dance Studios to support Jefferson Dancers program

<sup>3</sup> 1,000 seat Theater

<sup>4</sup> Partner space includes area for SEI and Latino Network

<sup>5</sup> Net to Gross ratio reflects reuse of existing building

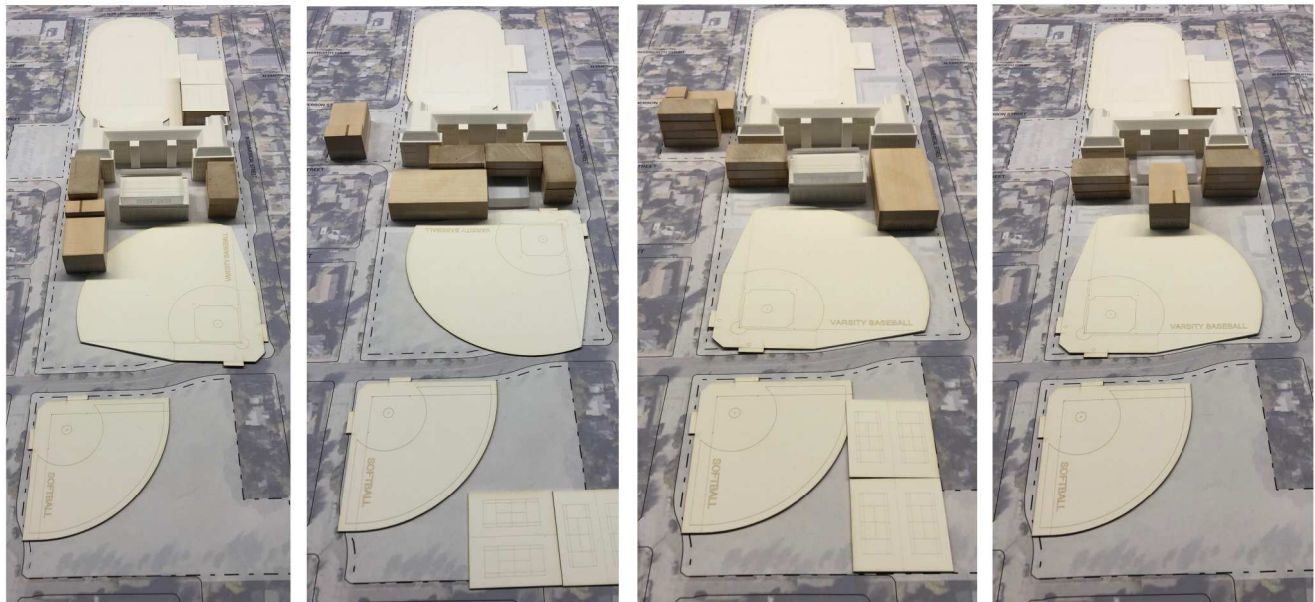
# CMPC 3 - CONCEPT DEVELOPMENT



ACCESSIBILITY ANALYSIS



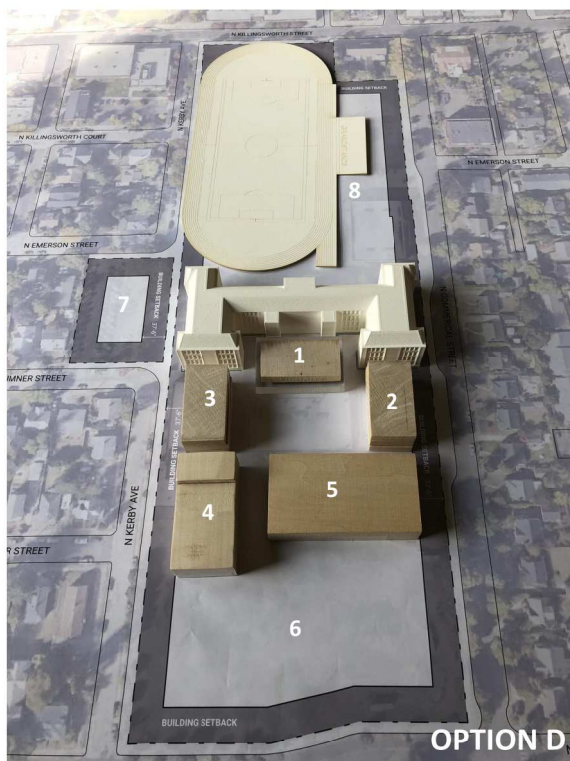
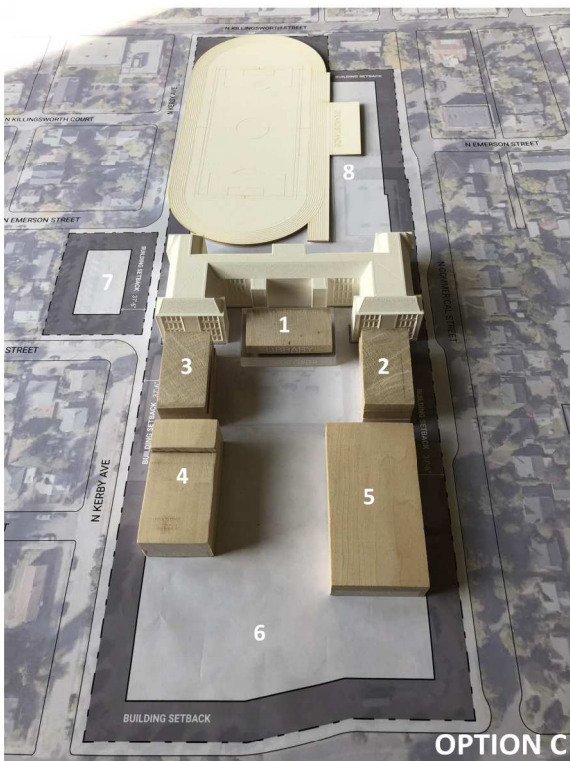
SEISMIC ANALYSIS



ORGANIZATION & MASSING OPTIONS CREATED BY CMPC MEMBERS



# CMPC 4 & 5 - CONCEPT REFINEMENT



- KEY**
- |                                     |                             |
|-------------------------------------|-----------------------------|
| 1 Library and Student Commons       | 5 Gymnasium & Auxiliary Gym |
| 2 Science Classrooms                | 6 Athletic Fields           |
| 3 Fine & Performing Arts Classrooms | 7 Parking                   |
| 4 Theater                           | 8 Grandstand & Team Rooms   |

MASTER PLANNING CONCEPT OPTIONS