



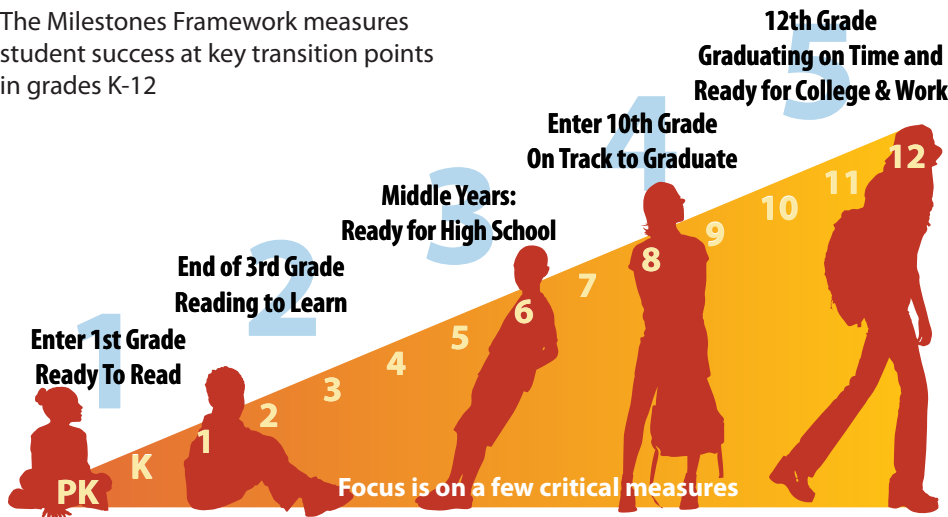
PORTLAND PUBLIC SCHOOLS Facts and figures 2011-12



Founded in 1851, Portland Public Schools is the largest school district in Oregon, serving more than 47,000 students from pre-kindergarten through high school. PPS is one of the rare urban school districts nationwide whose students regularly outperform the state average on achievement standards. In addition to highly trained teachers and staff, Portland Public Schools benefits from community, state and national partnerships, as well as strong family support.

Measuring results: Milestones Framework

The Milestones Framework measures student success at key transition points in grades K-12



Milestones Report for 2010-11

PPS is focused on raising achievement and graduation rates for all students. The Milestones Framework gauges student achievement at key learning stages, from the earliest grades through graduation day. Assessments at each Milestone — from test results to attendance data — evaluate school district success in preparing students for the next grade level and beyond. **PPS schools produced achievement gains at nearly all Milestones in 2010-11, and the gap between white students and students of color narrowed at key Milestones.**

Hitting Milestones targets

Milestone	2009-10 Actual	2010-11 Target	2010-11 Actual
Reading to Learn (Exceed benchmark by the end of 3rd grade)	46%	Keep up: +5 Catch up: Close gap by 5	✓ +5 (51%) ✓ -5 (38 pts)
Ready for High School (Meet writing benchmark in 7th grade)	52%	Keep up: +5 Catch up: Close gap by 5	✓ +10 (62%) -4 (29 pts)
On Track to Graduate (Enter 10th grade with 6 credits)	54%	Keep up: +5 Catch up: Close gap by 5	✓ +5 (59%) ✓ -5 (28 pts)

PPS set 5 percent growth targets in the three key Milestones above. In addition, the school district is tracking the following Milestones to give a complete picture of student achievement to guide instructional focus and resource allocation.

Percent of students meeting milestones	One-year change
Enter first grade ready to read	NA NA*
Seventh-graders with 90% or better attendance rate	86% ↑ 3%
Eighth-graders passing algebra	64% ↑ 7%
Graduation rate (cohort method)	59% ↑ 5%

*Note: PPS is re-evaluating assessments for the first grade Milestone.

Student enrollment

District schools	43,314
Head Start Early Childhood	790
Community-based programs	1,150
Special services programs	502
Public charter schools	1,532
Total	47,288

Our students

African American	12.1%
Asian/Pacific Islander	9.2%
Hispanic	15.9%
Native American	1.2%
White	55.6%
Multiple/Other	6%
Languages spoken	94
English language learners	9%
Eligible for free/reduced-priced meals	45%
Receive special education services	14%

Schools

Elementary	28
K-8 schools	30
Middle schools	10
High schools	12
K-12	1
Total	81*

*PPS students also attend the Head Start Early Childhood Education program, 17 community-based programs, 17 special services programs and 7 charter schools.

Employees

Teachers	2,828
Classified Represented	1,729
Licensed School Administrators	158
Non-Represented	386
Substitutes	1,006
Other	437
Total	6,544

Note: This is a snapshot of the school district. Actual student enrollment shifts daily, while PPS employees leave and new staff join throughout the year. The figures are based on October 2011 information.

The PPS mission: By the end of elementary, middle and high school, every student will meet or exceed academic standards and will be fully prepared to make productive life decisions. Portland Public Schools is an equal opportunity educator and employer.

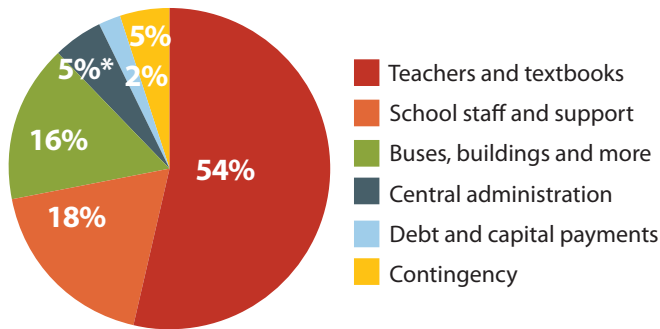
Saving costs, focusing on the classroom

Schools receive 72 cents of every dollar from the state of Oregon. But state cuts have taken a toll. So have shifting state budget priorities. K-12 schools now receive less than 39 percent of the state budget, down from 45 percent six years ago.

Portland Public Schools has focused funding where it counts: 72 cents of every dollar goes directly into schools (for educators and learning materials).

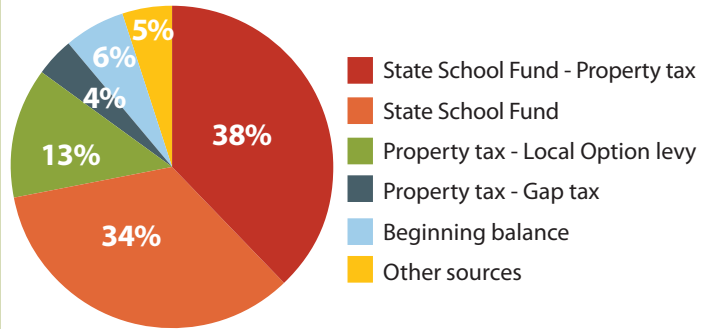
Nearly all the rest pays for school support — such as busing and school building upkeep.

2011-12 General Fund Budget (\$467 million)



*Note: The transfer of the Risk Management budget from a self-insurance fund to the general fund accounts for a 1% increase from 2010-11 in central administration spending.

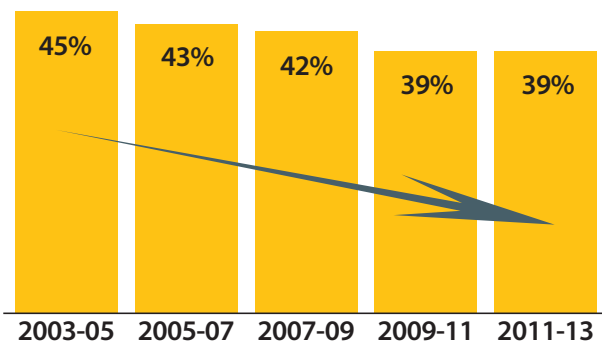
Where the money comes from (General Fund)



Source: Portland Public Schools budget office

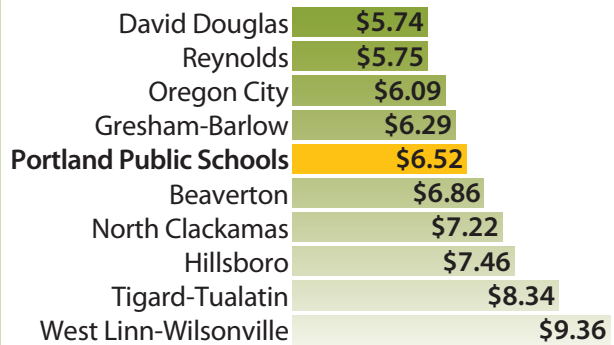
State/local funding for education

K-12 education's share of Oregon's state budget, 2003-13



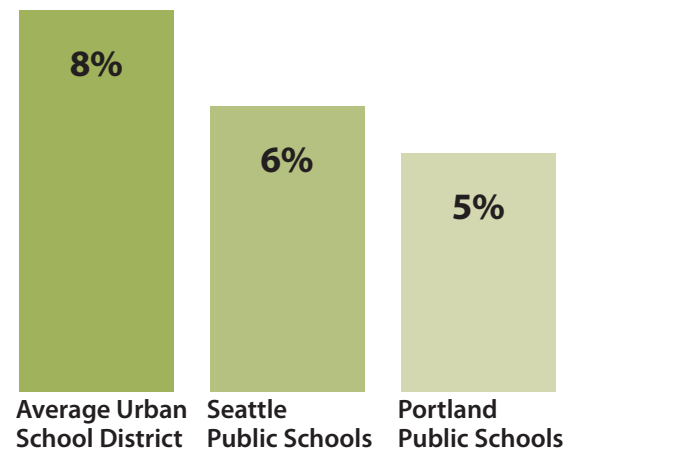
Source: Oregon School Boards Association, Legislative Fiscal Office

2011-12 property taxes (per \$1,000 of assessed value)



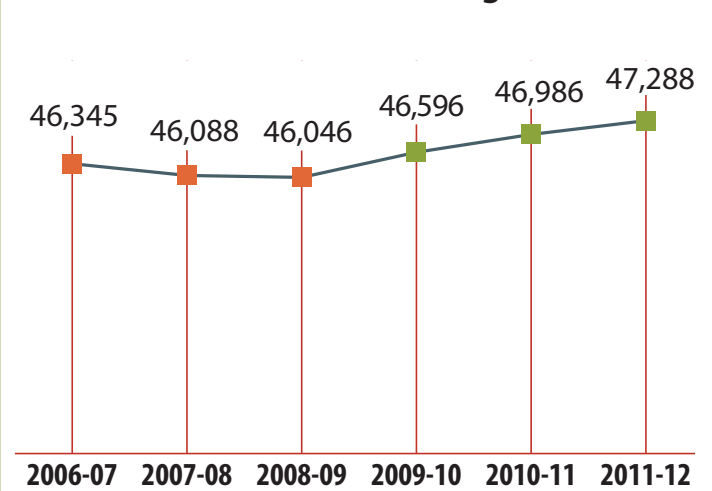
Source: Multnomah, Washington, Clackamas and Yamhill Counties' Divisions of Assessment & Taxation

Portland Public Schools spends less on administration



Source: Council of Great City Schools; Seattle Public Schools

PPS student enrollment is rising



Source: Portland Public Schools Enrollment Summaries