



FORWARD
TOGETHER

ODE's Aligning for Student Success: Integrated Guidance for Six ODE Initiatives

PPS Plan - March 2023

Our Guide



Destination



Roadmap



Compass

Portland Public Schools reimagined
Preparing Our Students to Lead Change and Improve the World

PROSPECT STUDIO + PORTLAND PUBLIC SCHOOLS

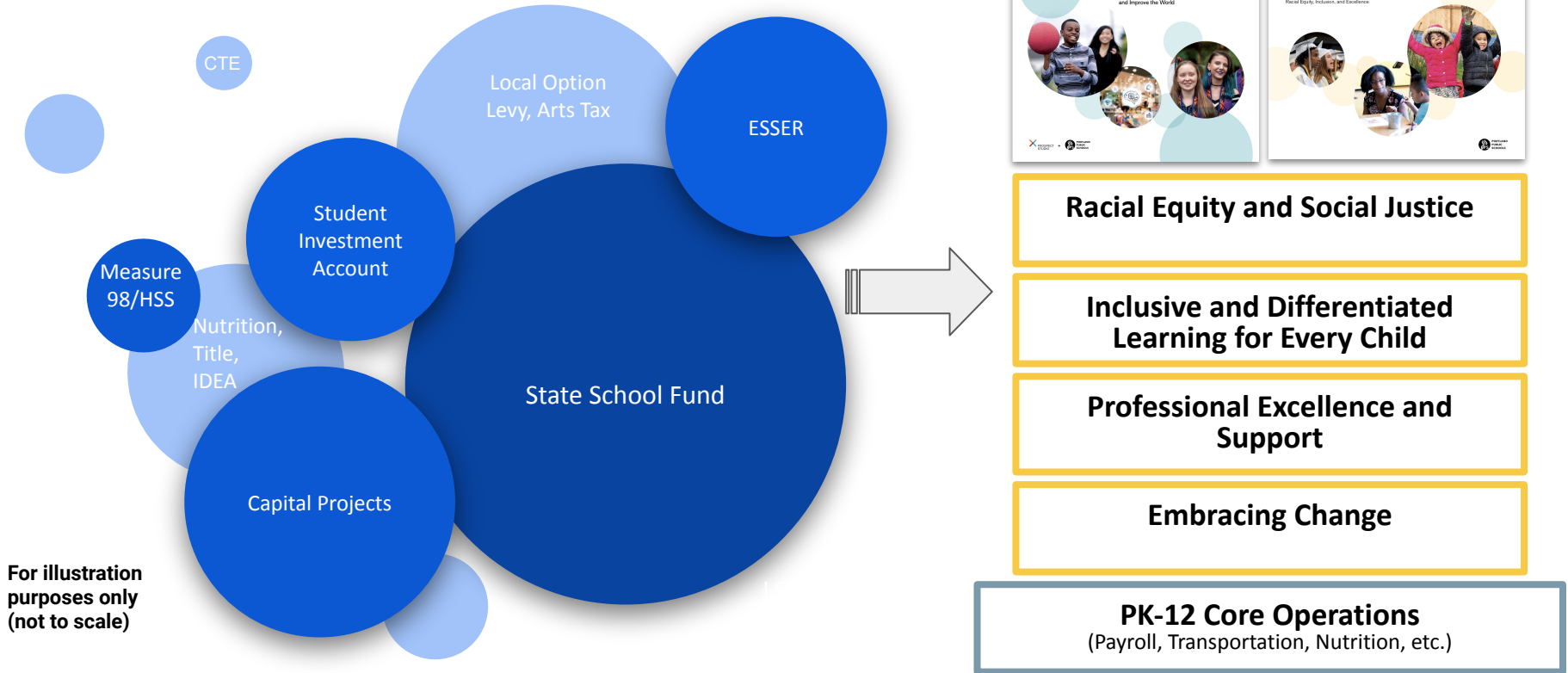
Forward Together
2021–2025 Strategic Plan for Racial Equity, Inclusion, and Excellence

PORTLAND PUBLIC SCHOOLS

Eliminate Opportunity Gaps

Student Academic Achievement Goals

Aligning Investments Towards Our Strategic Plan



Racial Equity and Social Justice

Inclusive and Differentiated Learning for Every Child

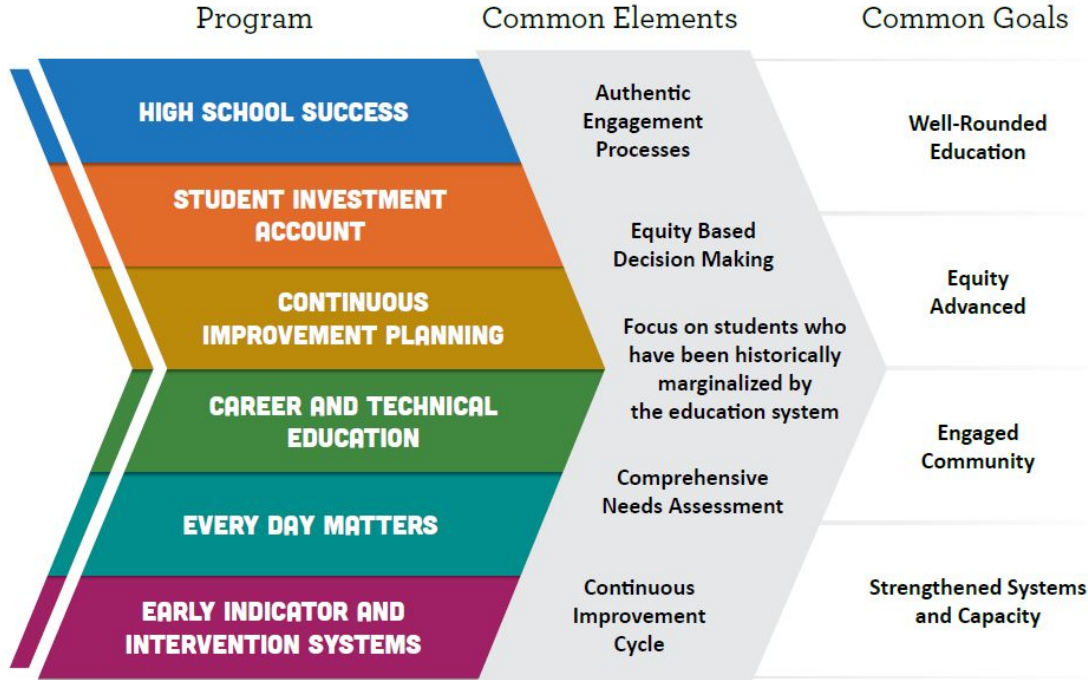
Professional Excellence and Support

Embracing Change

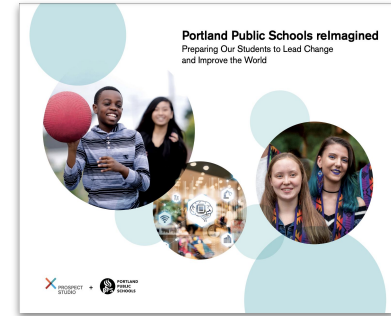
PK-12 Core Operations
(Payroll, Transportation, Nutrition, etc.)

Integrated Grant Plan

ODE Integrated Grant Program Overview

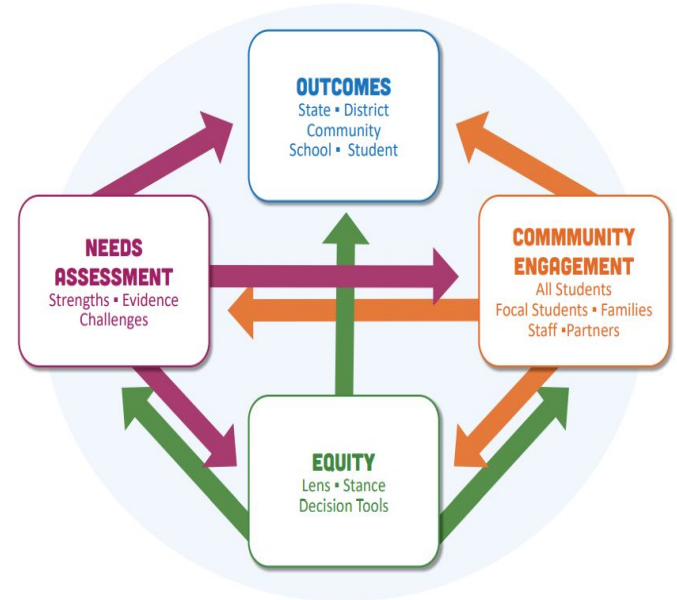


2023-2024 School Year
\$51.9 Million



ODE Required Planning Processes

- Use of an equity lens
- Community engagement
- Tribal Consultation
- Comprehensive Needs Assessment
- Consider the Oregon Quality Education Model and Student Success Plans
- Review and use regional CTE Consortia inputs
- Further Examination of Potential Impact on Focal Students tied to Planning Decisions
- Development of a four-year plan with clear Outcomes, Strategies, and Activities



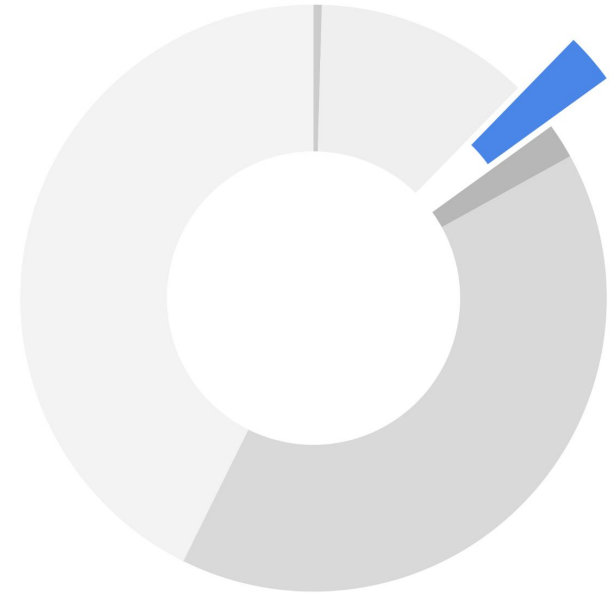
Overview of Six ODE Initiatives Included in Plan

Program	Overview
High School Success (HSS) - \$13.3M	Funded by ballot Measure 98 in November 2016 to increase graduation rates and ensure high school graduates are ready for college and career.
Student Investment Account (SIA) - \$34.9M	Funded by the Student Success Act of 2019 to support students' mental health or behavioral needs, reduce academic disparities, and increase academic achievement for focal student groups
Continuous Improvement Planning (CIP) - \$1.5M	Funded through the US Department of Education's Every Student Succeeds Act (ESSA) to improve student outcomes at CSI and TSI schools.
Career Technical Education - Perkins V (CTE) - \$435k	Funded as part of Oregon's CTE State Plan for developing Career Technical Education (CTE) Programs of Study. Investments designed to improve access and participation in education and training programs that prepare learners for high-wage, high-skill, in-demand careers.
Every Day Matters (EDM) - \$0	State requirements to address chronic absenteeism through attention to student engagement, school culture, climate and safety, culturally sustaining pedagogy, and family and community involvement.
Early Indicators & Intervention Systems (EIS) - \$131k	Supports investment in systems to collect and analyze predictive student data.

ODE Integrated Grant Funds Represent About 3% of PPS Budget

Our estimated **\$1.88 Billion PPS Budget*** can be categorized:

- **General (42.7%)**
Primary source of dollars used for day-to-day operations of the District, this includes funds such as Local Option Levy, Arts Tax and the fund balance.
- **Special Revenue (11.8%)**
Restricted dollars from Nutrition Services, IDEA, Local Grants (e.g. Foundations)
 - **Integrated Grant Guidance (2.8% of overall)** Restricted dollars from the integrated grant plan, which includes High School Success (M98), Student Investment Account (SIA), CTE, EDM, EIIS
 - **ESSER (1.9% of overall)** Restricted dollars from the federal emergency relief
- **Capital Projects and Debt Service (40.3%)**
Construction/renovation of school facilities, technology and curriculum upgrades and payment of long-term debt (e.g. PERS, etc)
- **Internal Service (0.4%)**
Cost-reimbursement resources (e.g. insurance, worker's comp)




* **Total Budget and Percentages use current year numbers as an approximate and for illustrative purposes only.**

IGG Plan Links and Artifacts


Core District Plan Documents

- [Integrated Application Narrative](#)


 Aligning for Student Success: Integrated Guidance for Six ODE Initiatives
 Application Narrative

Needs Assessment Summary	2
Plan Summary	3
Equity Advanced	4
Well-Rounded Education	9
Engaged Community	18
Strengthened Systems and Capacity	24
Attachments Completing Your Submission	28
Assurances	29

- [Integrated Plan & Budget \(2023-2025\)](#)


 Portland Public Schools
 ODE's Aligning for School Success: Integrated Guidance for Six ODE Initiatives (IGIG)
 2023-2023 IGG Budget

Priority #	PPS Initiative Area	Proposed Activity	Outcome Measurement	PP	PP Type	ODE Extension Grant	Performance Measure	PPS Initiative Programs	IGIG Initiative Area	Object Code	CS Activity ID
-	-	Total Allocation 2023-24:		224.11		-					\$1.2
-	-	Total Budgeted Amounts (Autosum):				-					\$1.2
-	-	Unbudgeted (Autocalculate):				-					
Indirect	Indirect	Indirect Administration	N/A	N/A	N/A	2000	INDE	INDE	INDE	490 Indirect	
0-43	50	Professional development and implementation of curricular resources	N/A	N/A	N/A	N/A	N/A	N/A	INDE	514 Instructional	
0-83	3	Improved FTE ratios for 6th-8th grade electives	N/A	N/A	N/A	N/A	N/A	N/A	INDE	111 Licensed	
0-83	4	Improved FTE ratios for 6th-8th grade electives FRINGE	FRINGE	FRINGE	General Multiple subject teacher (middle/high)	N/A	N/A	N/A	INDE	200 Benefits	
0-83	9	Improved Arts Pathway	N/A	\$1.75	Arts Fine & Performance Arts (art/music/theater)	N/A	N/A	N/A	INDE	111 Licensed	
0-83	10	Improved Arts Pathway FRINGE	FRINGE	FRINGE	Arts Fine & Performance Arts (art/music/theater)	N/A	N/A	N/A	INDE	200 Benefits	
0-83	11	College/Career Coordinators	N/A	\$3	Specialty Other	N/A	N/A	N/A	INDE	111 Licensed	

Plan Attachments

- [PPS Equity Lens](#)
- [Affirmation of Tribal Consultation](#)
- [Resolution 6680 - Integrated Grant Application 2023-25-as proposed](#)

Community Engagement Artifacts

- [Forward Together PPS Strategic Plan Community Engagement Process \(pages 10-11\)](#)
- [Instructional Framework Implementation RESJ Partnership Outreach](#)
- [Memo on Community Engagement on PPS Investments](#)
- [Successful Schools Survey Overview](#)
- [High School Success and CTE Family Listening Session](#)

Charter School Plans

Charter School Plans

- There are four district-sponsored and two state-sponsored charter schools included in the district's application
- The charter schools only apply through PPS for SIA funds
- PPS provides broad fiscal and monitoring oversight, but each charter school maintains its own SIA plan and budget
- Where applicable, PPS actively engages with all charter leaders – district-sponsored or state-sponsored – to administer SIA funds, including coordinating budgets and aligning strategies
- Per a statutory change to the Student Success Act, PPS is responsible to administer the SIA plan for the two state-sponsored charter schools starting July 2023

District-Sponsored Charter School Plan Links

Charter School	Integrated Plan & Budget 2023-2025	District Charter Program Agreement (DCPA)
Emerson School	Integrated Plan & Budget	DCPA
Le Monde French Immersion	Integrated Plan & Budget	DCPA
Portland Arthur Academy	Integrated Plan & Budget	DCPA
Portland Village School	Integrated Plan & Budget	DCPA

State-Sponsored Charter School Links

Charter School	Integrated Plan & Budget 2023-2025	District Charter Program Agreement (DCPA)
Cottonwood School of Civics and Science	Integrated Plan & Budget	DCPA
The Ivy School	Integrated Plan & Budget	DCPA